

## SECTION 4: CASING ELEVATOR / SPIDERS, PNEUMATIC SPIDERS

BJ type elevators/spiders are mechanized tools with air operation. They can handle casings size form 2 3/8" to 24 1/2" OD (with capacities of 250 to 750 tons). Slip action is controlled by a conveniently positioned pneumatic control valve, manual operation, or hydraulic actuators.

### BJ 250 TON ELEVATOR/SPIDER 2 3/8" - 7 5/8"

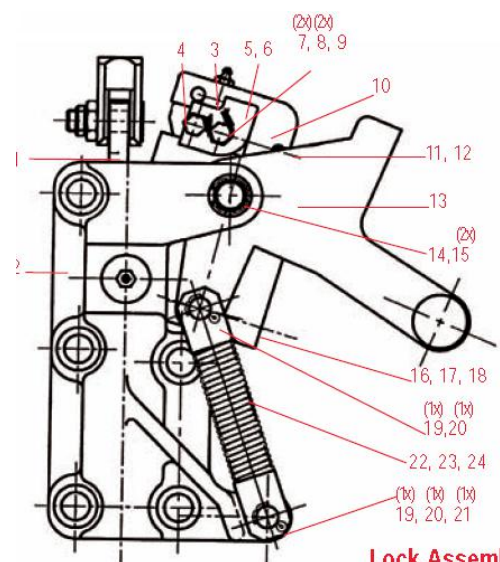
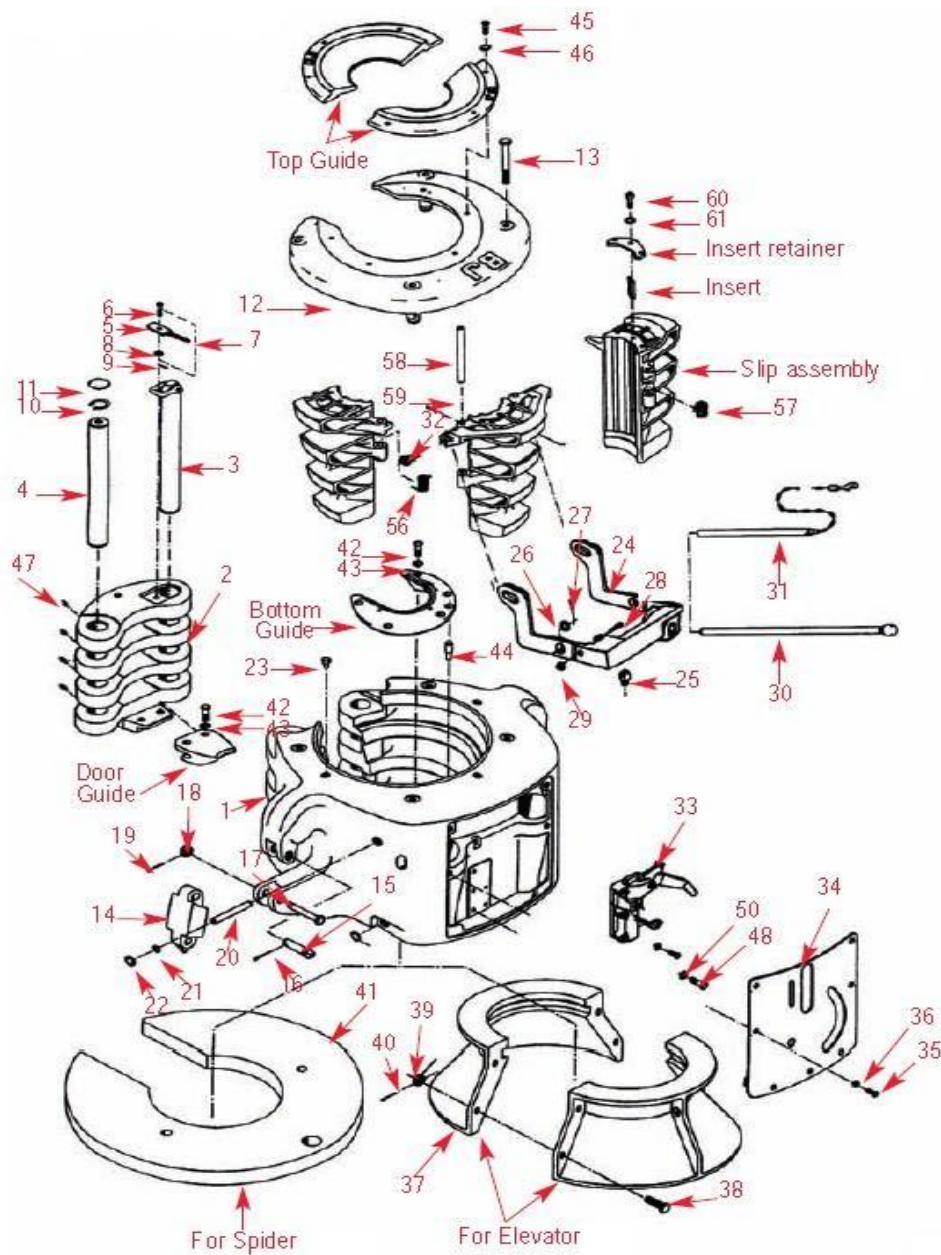


BJ 250 Ton Elevator/Spider 2 3/8" - 7 5/8"	
50364Y	Assembly complete, manual
50006260Y	Assembly complete, air operated
31021	Guide bell assembly, elevator
50422-2	Upper guard assembly, spider
31008	Spider adapter plate

### TECHNICAL SPECIFICATIONS

Slip Size	Pipe Size	Slip Assembly	Insert Part No.	Qty.	Insert Retainer Part No.	Top Guide Plate Assy	Bottom Guide Plate Assy
3- 1/2"	2-3/8"	50006291-238	24777	18	31003	51920	51925
	2-7/8"	50006291-278	25780	18	31004	51920	51925
	3-1/2"	5006291-312	16441	18	31005	51920	51925
4-1/2"	3-1/2"	50006292-312	24779	27	31177	51921	51926
	4"	50006292-400	24781	27	31177	51921	51926
	4-1/2"	50006292-412	BJ16408	27	31177	51921	51926
5-1/2"	4-1/2"	50006293-412	24785	27	31014	51922	51927
	5"	50006293-500	24783	27	31013	51922	51927
	5-1/2"	50006293-512	BJ16407	27	31012	51922	51927
7-5/8"	2006-5-8	50006294-658	25474	45	31011	51924	51928
	7"	50006294-700	26750	45	31010	51924	51928
	7-5/8"	50006294-758	BJ16407	45	31009	51924	51928

**BJ 250 TON ELEVATOR/SPIDER (DRAWING)**



**Lock Assembly**

## PARTS LIST BJ 250 TON ELEVATOR/SPIDER

Item	Qty	Description	250 ton 7 <sup>5</sup> / <sub>8</sub> " Part No.	Item	Qty	Description	250 ton 7 <sup>5</sup> / <sub>8</sub> " Part No.
		Unit Assembly	50364Y	<b>Lock Assembly for 250 Ton Elevator Spider</b>			
1	1	Body	50367Y			Unit assembly	50364Y
2	1	Door	50368Y	1	1	Lock rod	200374-1
3	1	Removable hinge pin 30991		2	1	Bracket	26273-1
4	1	Stationary hinge pin	30997	3	1	Grease fitting	53201
5	1	Plate	30994	4	1	Lock finger	200375
6	1	Bolt	30995	5	1	Lock, back support plate	200376
7	1	Chain	59001009-4	6	1	Lock, front support plate	200377
9	1	Cotter pin	51402-6	7	2	Screw	50004-16-C8D
10	1	Snap ring	53500-187	8	2	Lockwasher	939352-58
11	1	Plug	944047-15	9	1	Lockwire	947879-8
12	1	Upper guard	50422-1	10	1	Lock plate assembly	200373-1
13	4	Screw	50014-48-C8D	11	1	Spring pin	51604-6-C
14	2	Link retainer	9519	12	1	Extension spring	979478-143
15	2	Upper link block pin	8145	13	1	Handle	33996-1
16	2	Cotter pin	51402-12	14	1	Bracket pin	26277
17	2	Bolt	939099-97	15	2	Snap ring	53600-75
18	2	Nut	50514-C	16	1	Overload plunger	27458
19	2	Cotter pin	51402-16	17	1	Overload spring	945040-2
20	2	Yoke pivot pin	30999	18	1	Set screw	945262-98
22	2	Plug	944047-19	19	2	Flat washer	50808-N-C
24	1	Yoke	31039	20	2	Cotter pin	51402-8
25	1	Yoke eye bolt	28513	21	1	Spring plunger pin	939498-6
26	8	Flat washer	50816-N-C	22	1	Plunger guide	26280-1
27	4	Cotter pin	51404-14	23	1	Spring	26278
29	1	Lock nut	944423-6	24	1	Spring plunger pin	26279
30	1	Handle lift assembly	9737	25	1	Clevis	28514-1
31	1	Handle assembly, stabbing board	27140	26	1	Screw	50608-14-C
				27	1	Nut	51808-C
32	2	Slip retainer pin assembly	26338				
33	1	Slip lock assembly	200372-3				
34	1	Cover plate	31015				
35	4	Screw	50012-10-C8D				
36	4	Lockwasher	50912-C				
37	1	Casing guide bell assembly	31021				
39	4	Nut	50514-C				
40	4	Cotter pin	51402-14				
41	1	Spider adaptor plate 27½" RT	31008				
42	7	Screw	50110-14-C				
43	7	Lockwasher	51110-C				
44	1	Slip stop pin	34300				
45	5	Screw	50010-14-C8D				
46	5	Lockwasher	939352-114				
47	4	Grease fitting	53201				
48	3	Screw	50110-20-C				
49	2	Screw	50010-12-C				
50	5	Lockwasher	51110-C				
54	1	Name plate	BJ 70486				
55	4	Drive Screw	53301-4-5				
56,57	2	Slip spring 7 <sup>5</sup> / <sub>8</sub> " slip	30996				
	2	Slip spring 5½" slip	1002				
	2	Slip spring 4½" and 3½" slips	30998				
58	2	Slip hinge pin	31001				
59	2	Cotter pin	51403-10				
60	9	Screw	50110-12-C				
61	9	Lockwasher	51110-C				



## BJ 350 TON ELEVATOR SPIDERS 4-1/2" TO 13-3/8"

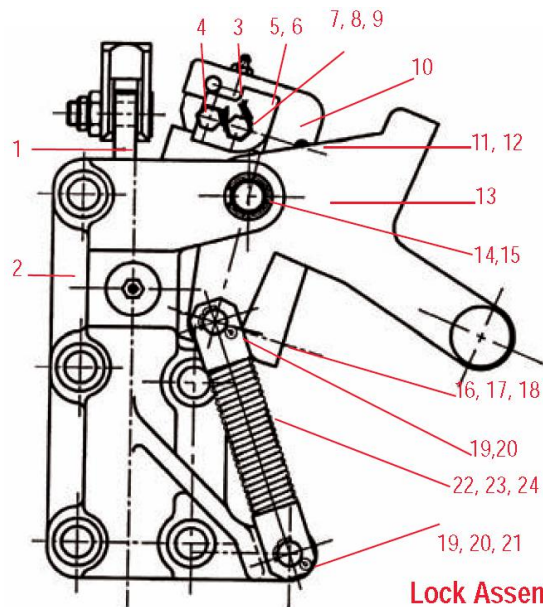
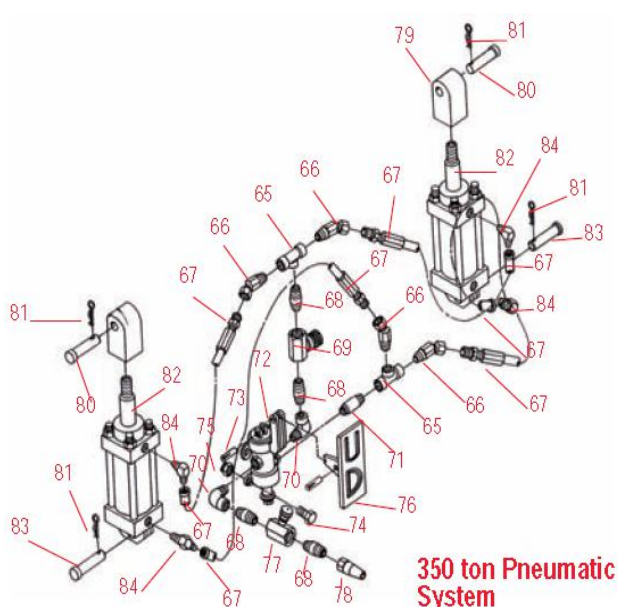
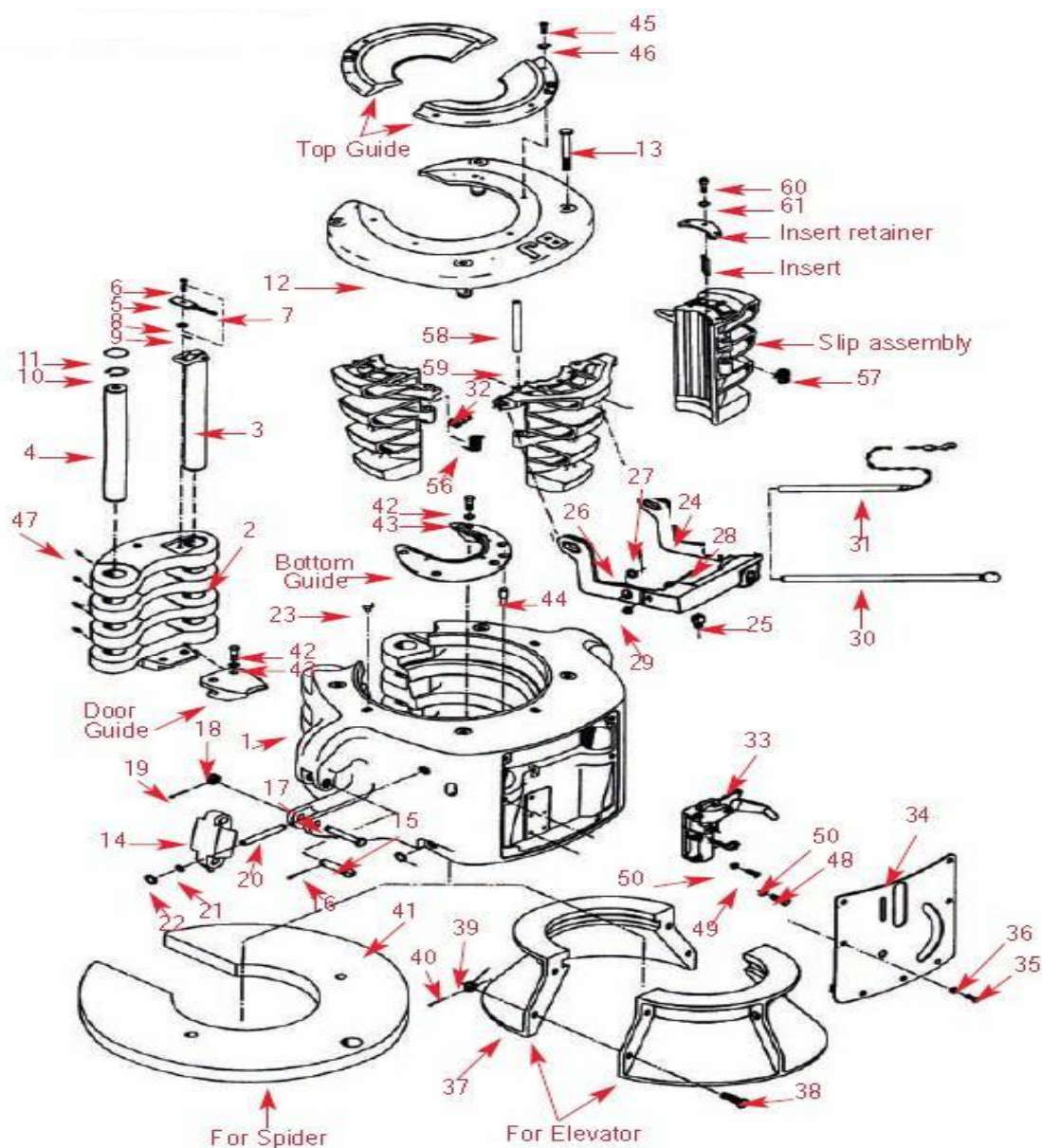


BJ 350 Ton Elevator/Spider 4-1/2" - 13-3/8"	
P/N	Description
Weight 3050 lb (Man.) 3500 lb (Air)	
33492	Body Assy. Complete Less Slip, Guide Plate & Air Supply Hose Assemblies (Air)
34301	Body Assembly Complete Less Slip & Guide Plate Assemblies (Manual)
28599	Casing Guide Bell Assembly 28570-1 Upper Guard Assembly
27000	Spider Adapter Plate 27 1/2" RT
31100	Spider Adapter Plate 37 1/2" RT (except EMSCO_)
32698	Spider Adapter Plate 37 1/2" RT EMSCO

## TECHNICAL SPECIFICATIONS

API Pipe Sizes		Spider Guide	Elevator Guide	Slip Assy.	Insets	Qty.
in	mm	plate assy	plate assy	w/insets		
4 1/2	114.3	51949	51936	28556-8	24785	36
5	127	51950	51936	28556-4	24783	36
5 1/2	139.7	51950	51936	28556	16407	36
5 3/4	146.05	51951	51937-1	28551-10	29254	48
6	152.4	51951	51937-1	28551-8	24785	48
6 5/8	168.28	51952	51937	28551-3	24748	48
6 5/8	168.28	51952	51937	28546-8	25474	60
7	177.8	51952	51937	28551	16407	48
7	177.8	51952	51937	28546-5	26750	60
7 5/8	193.68	51953	51938	28546	16407	60
7 5/8	193.68	51953	51938	28541-8	25474	60
8 5/8	219.08	51954	51939	28541	15660	72
8 5/8	219.08	51954	51939	28536-8	25474	72
9 5/8	244.48	51955	51940	28536	15660	72
9 5/8	244.48	51955	51940	28531-11	33249	72
10 3/4	273.05	51956	51941	28531	15660	72
10 3/4	273.05	51956	51941	28526-8	25474	72
11 3/4	298.45	51957	51942	28526	15660	72
12 3/4	323.85	51958	28571	28521-5	32700	84
13 3/8	339.73	51958	28571	28521	15660	84

**BJ 350 TON ELEVATOR/SPIDER (DRAWING)**



### PARTS LIST BJ 350 TON ELEVATOR/SPIDER

Item	Qty	Description	350 ton 13 3/8" Part No.	Item	Qty	Description	350 ton 13 3/8" Part No.
		Unit Assembly	33492Y	57	1	Left hand spring 13 3/8" slip	28519-2
1	1	Body	28501-1Y		1	Left hand spring	28520-2
2	1	Door	28502Y	58	2	Slip hinge pin	26284
3	1	Removable hinge pin	28505	59	2	Cotter pin	51404-20
4	1	Stationary hinge pin	28504	60	9	Screw	50112-10-C
5	1	Plate	27047-1	61	9	Lockwasher	51112-C
6	1	Bolt	27047-2	65	2	Tee	52706-B
7	1	Chain	59001009-4	66	4	45° elbow, swivel	942744-6
8	1	Flat washer	50810-N-C	67	4	Hose assembly	950268-255
9	1	Cotter pin	51402-10	68	4	Close nipple	53906-B-8
10	1	Snap ring	53500-250	69	1	Flow control valve	943949-3
11	1	Plug	944047-26	70	2	90° elbow	52406-B
12	1	Upper guard	28570	71	1	Nipple	56723-06-16
13	4	Screw	50016-64-C8D	72	1	Control valve	943952-12
14	2	Link retainer	26257	73	2	Groove pin	941067-50
15	2	Upper link block pin	11541	74	4	Screw	50005-10-C8D
16	2	Cotter pin	51435-12	75	4	Lock nut	51805-C
17	2	Bolt	939099-168	76	1	Threadle	32763
18	2	Nut	50516-C	77	1	Flow control valve	944052-6
19	2	Cotter pin	51402-14	78	1	Quick-coupling adaptor	942570-7
20	2	Yoke pivot pin	28509	79	2	Knuckle	939516-4
22	2	Plug	944047-19	80	2	Hinge pin	BJ13494
23	3	Oil hole cover	940325-5	81	4	Hair pin cotter	944042-6
24	1	Yoke	33494	82	2	Air cylinder	943472-501
25	1	Yoke eye bolt	28513	83	2	Clevis pin	56412-24-SHP
26	2	Flat washer	50816-N-C	84	4	90° elbow	56506-8-6-S
27	2	Cotter pin	51403-14				
28	1	Bolt	51708-18-C				
29	1	Lock nut	944423-6				
30	1	Handle lift assembly	9737				
31	1	Handle assembly, stabbing board	27140				
32	2	Slip retainer pin assembly	26338				
33	1	Slip lock assembly	200372-1				
34	1	Cover plate	33495				
35	4	Screw	5012-10-C8D				
36	4	Lockwasher	50912-C				
37	1	Casing guide bell assembly	28599				
39	4	Nut	50516-C				
40	4	Cotter pin	51402-14				
41	1	Spider adaptor plate 27-1/2" RT	27000				
	1	Spider adaptor plate 37-1/2" RT (except Emsco)	31100				
	1	Spider adaptor plate 37-1/2" RT (Emsco s/n < 49)	32698				
	1	Spider adaptor plate 37-1/2" RT (Emsco s/n > 48)	34050				
42	7	Screw	50014-16-C8D				
43	7	Lockwasher	50914-C				
44	1	Slip stop pin	26349				
45	5	Screw	50010-14-C8D				
46	5	Lockwasher	939352-114				
47	4	Grease fitting	53201				
48	3	Screw	50110-20-C				
49	2	Screw	50110-12-C				
50	5	Lockwasher	51110-C				
51	2	Cover plate	29647				
52	4	Screw	50006-7-C8D				
53	4	Lockwasher	50906-C				
54	1	Name plate	BJ 70486				
55	4	Drive Screw	53301-4-4				
56	1	Right hand spring 13 3/8" slip	28519-1				
	1	Right hand spring	28520-1				

### Lock Assembly for 350 Ton Elevator Spider

Item	Qty	Description	350 ton 13 3/8" Part No.
		Unit assembly	33492Y
1	1	Lock rod	200374-3
2	1	Bracket	26273-1
3	1	Grease fitting	53201
4	1	Lock finger	200375
5	1	Lock, back support plate	200376
6	1	Lock, front support plate	200377
7	2	Screw	50004-16-C8D
8	2	Lockwasher	939352-58
9	1	Lockwire	947879-8
10	1	Lock plate assembly	200373-1
11	1	Spring pin	51604-6-C
12	1	Extension spring	979478-143
13	1	Handle	28512-2
14	1	Bracket pin	26277
15	2	Snap ring	53600-75
16	1	Overload plunger	27458
17	1	Overload spring	945040-2
18	1	Set screw	945262-98
19	2	Flat washer	50808-N-C
20	2	Cotter pin	51402-8
21	1	Spring plunger pin	939498-6
22	1	Plunger guide	26280-1
23	1	Spring	26278
24	1	Spring plunger pin	26279
25	1	Clevis	28514-1
26	1	Screw	50608-14-C
27	1	Nut	51808-C



**VARCO 500 TON ELEVATOR /SPIDERS 4-1/2" TO 24-1/2"**



**Varco 500 Ton Elevator Spider**  
**Varco 4-1/2" to 14"**  
**Varco 16" to 24-1/2"**  
**BJ 4-1/2" to 13-3/8"**

**TECHNICAL SPECIFICATIONS**

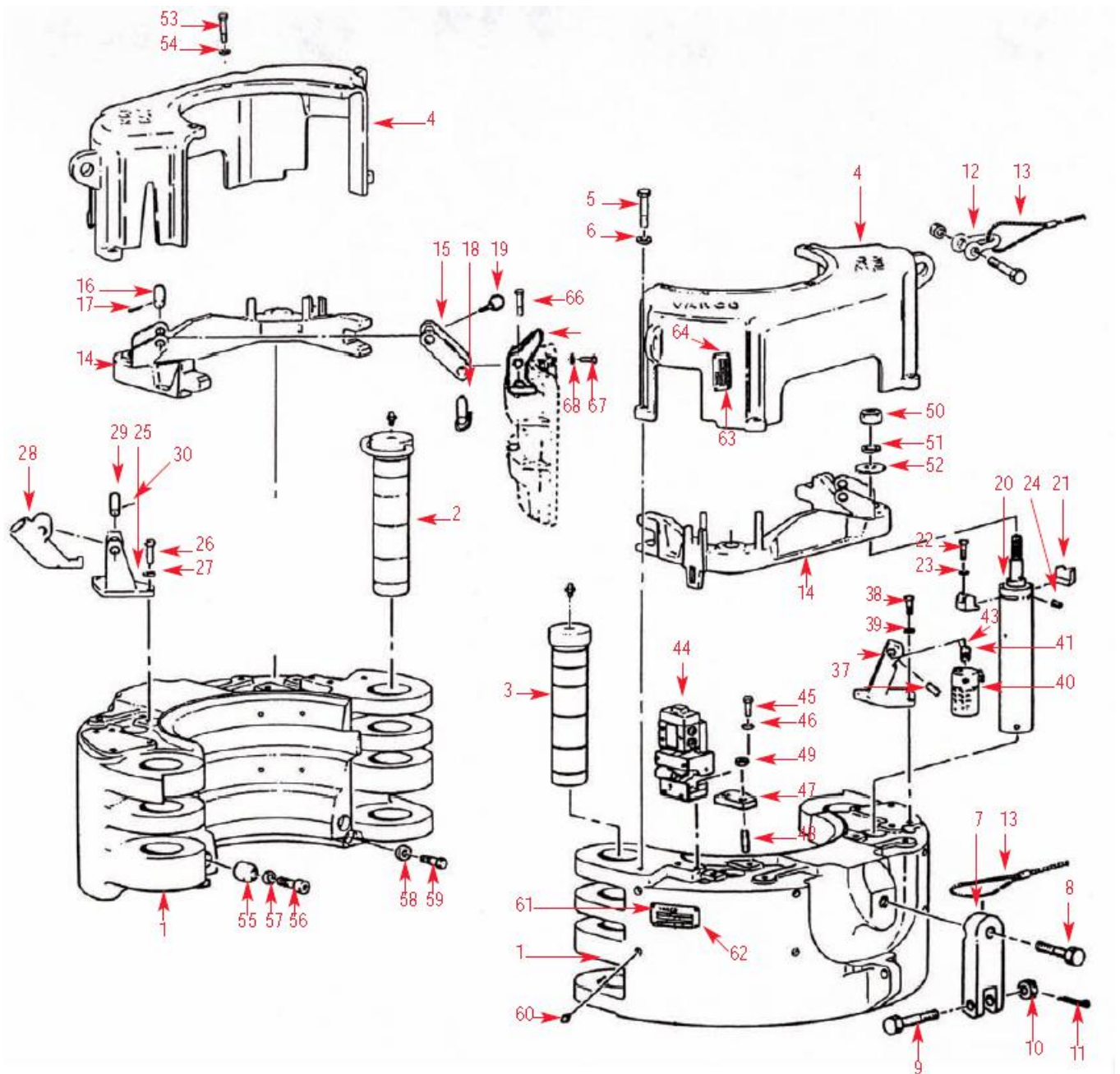
Varco 500 Ton 4-1/2"-14"					
P/N	Description				
13800Y	Elevator/Spider Less Slips & Guides 5000 lb (2268 kg)				
11798	Bell Guide Kit 400 lb (181 kg)				
19276	Spider Adapter Plate 700 lb (318 kg)				
11881	Airline and Filter Assembly				
Casing Size (in)	Elevator Bottom Guide P/N	Spider Top Guide P/N	Slip Sets with Inserts P/N	Insert Set P/N	Qty.
4 1/2	11787	V18419-1	13842Y3	2168-16B-32	48
5	11788	V18419-2	13842Y2	2169-16B-32	48
5 1/2	11789	V18419-3	13842Y1	2170-48	48
6 5/8	11791	18419-4	13841Y3	2632-24B-48	72
7	11791	18419-4	13841Y2	2323-24B-48	72
7 5/8	11792	18419-5	13841Y1	2633-72	72
7 3/4	11792	18419-5	13841Y4	2649-72	72
8 5/8	11793	18419-6	13840Y3	2640-21B-64	96
8 3/4	11793	18419-5	13840Y5	26550-32B-64	96
9 5/8	11794	18419-7	13840Y1	2633-96	96
9 3/4	71231	18419-15	13840Y4	2649-96	96
9 7/8	71231	18419-15	13840Y2	2649-96	96
10 3/4	11795	18419-8	13839Y3	2640-40B-80	120
10 7/8	11795	18419-8	13839Y4	2650-40B-80	120
11 3/4	11796	18419-9	13839Y2	2637-120	120
11 7/8	11796	18419-9	13839Y1	2651-120	120
13 3/8	11797	18419-10	70734Y5	2636-40B-80	120
13 1/2	71228	18419-12	70734Y4	2652-40B-80	120
13 5/8	71228	18419-12	70734Y3	2653-40B-80	120
13 3/4	71228	18419-12	70734Y2	2655-40B-80	120
14	15939	18419-11	70734Y1	2635-120	120

Varco 500 Ton 16"-24-1/2"					
P/N	DESCRIPTION				
15740Y	Elevator/Spider Less Slips and Guides 10.500 lb (4763 kg)				
19001	Bell Guide Kit 600 lb (272 kg)				
16552	Spider Adapter Plate 27000 lb (1225 kg)				
11881	Airline and Filter Assembly				
Casing Size (in)	Elevator Bottom Guide P/N	Spider Top Guide P/N	Slip Sets with Inserts P/N	Insert Set P/N	Qty.
16	15794-6	73139-6	15790Y6	2636	180
18	16184	73138	15790Y4	2635-180	180
18 5/8	15794	73137	15790Y3	13868-4201	420
250	15793	73136	15790Y2	2635-1880	180
22	50006055	50006074	15790Y5	2635-180	180
24	15792	73135	15790Y1	2635-180	180
24 1/2	74818	74817	15226Y1	2635	180

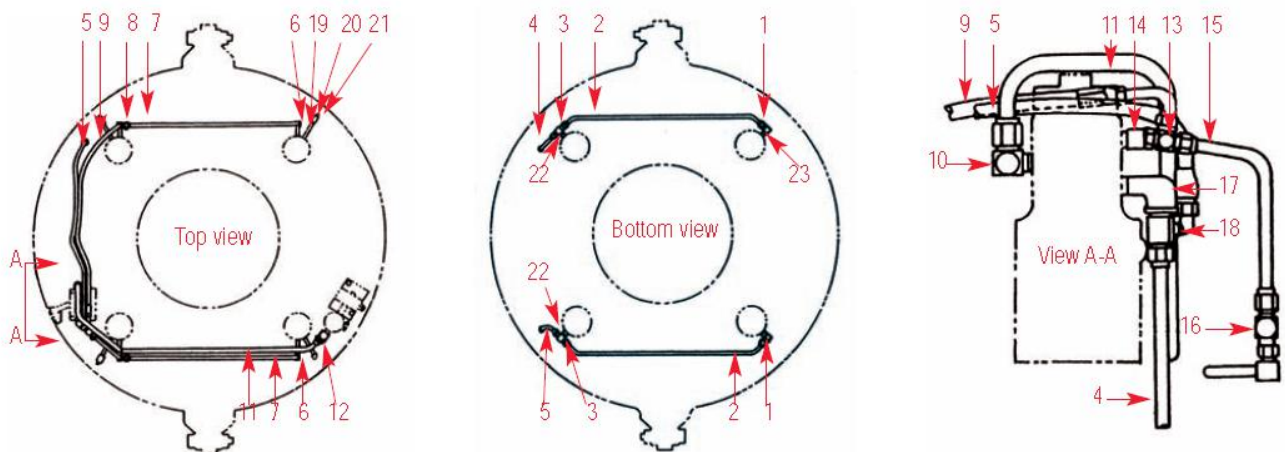
BJ 500 Ton 4-1/2"-13-3/8"					
P/N	DESCRIPTION				
Weight 4900 lb (Man,) 4990 lb (Air)					
32664-1	Body Assembly Complete Less Slip, Guide Plate & Air Supply Hose Assemblies (Air)				
32664	Body Assembly Complete Less Slip & Guide Assemblies (Manual)				
28599	Casing Guide Bell Assembly				
32683-1	Upper Guard Assembly				
27000	Spider Adapter Plate 27 1/2" RT				
31100	Spider Adapter Plate 37 1/2" RT (except EMSCO)				
32698	Spider Adapter Plate 37 1/2" RT (EMSCO)				
API Pipe Sizes		Spider Guide	Elevator Guide	Slip Assy.	Insets
in	mm	plate assy	plate assy	w/insets	
4 1/2	114.3	51949	51936	52551-8	24785
5	127	51950	51936	52551-4	24783
5 1/2	139.7	51950	51936	52551	16407
6 5/8	168.28	51952	51937	52552-8	25474
7	177.8	51952	51937	52552-5	26750
7 5/8	193.68	51953	51938	52552	16407
8 5/8	219.08	51954	51939	52553-8	25474
9 5/8	244.48	51955	51940	52553	15660
10 3/4	273.06	51956	51941	52554-8	25474
11 3/4	298.45	51957	51942	52554	15660
12 3/4	323.85	51958	28571	52555-5	32700
13 3/8	339.73	51958	28571	52555	15660



**VARCO 500 TON ELEVATOR/SPIDER 14" (DRAWING)**



**ALTERNATIVE VIEWS**



**PARTS LIST VARCO 500 TON ELEVATOR/SPIDER 14"**

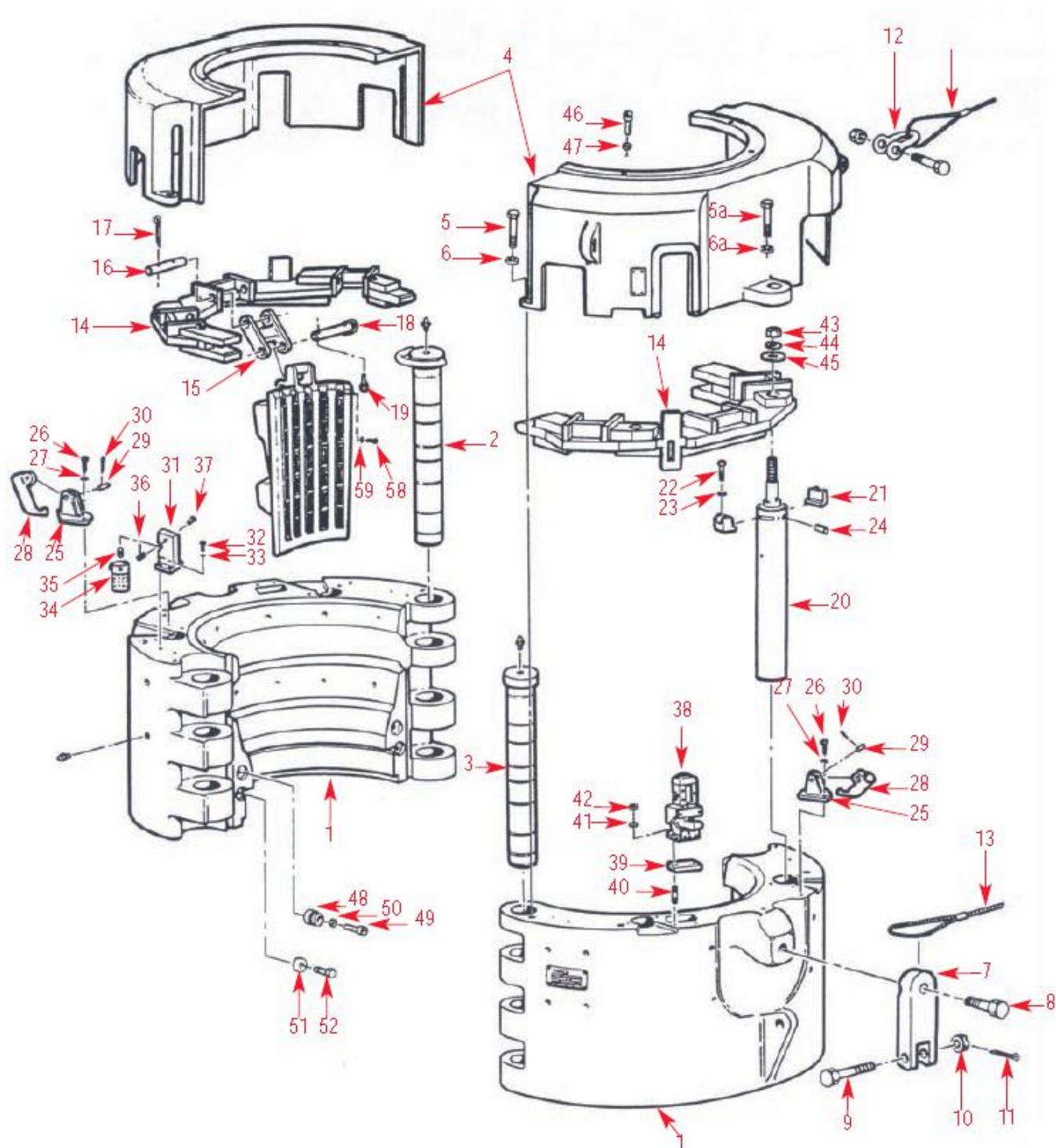
Item	Qty	Description	500 ton 14" Part No.	Item	Qty	Description	500 ton 14" Part No.
1	2	Unit Assembly	13800Y	57	2	Hi-collar lockwasher	51112-C
2	1	Body	13801Y	58	4	Guide keeper	12897
3	1	Removable hinge pin	13806	59	4	Screw	50008-8-C8D
4	1	Stationary hinge pin	13807	60	28	Grease fitting	53201
5	8	Top cover set	17913	61	1	Name plate	13812
6	8	Screw	50010-16-C8D	62	4	Drive screw	53301-10-6
7	8	Lockwasher	50910-C	63	1	Slip release plate	15319
8	2	Link retainer	82084-1	64	4	Drive screw	53301-4-5
9	2	Screw	82088	65	4	Slip bracket	14339-2
10	2	Nut	15261-1	66	16	Screw	50610-12-C
11	2	Cotter pin	50516-C	67		Insert retainer bolt	50108-6-S
12	2	Anchor shackle	51402-16	68		Washer	51108-C
13	2	Safety sling	944515-2	69	4	Hanger spacer	16191
14	2	Leveling beam	18122				
15	4	Slip link	11884				
16	4	Upper slip link pin	11877				
17	8	Cotter pin	11878				
18	4	Lower slip link pin	51403-12-S				
19	4	Linch pin	11989				
20	4	Air cylinder assembly	7887				
21	8	Cylinder retainer	11800				
22	8	Screw	11849				
23	8	Lockwasher	50008-12-C8D				
24	4	Pipe plug	50908-C				
25	1	Manual lift bracket	53002-02				
26	2	Screw	11840				
27	2	Lockwasher	50008-8-C8D				
28	1	Manual lift socket	50908-C				
29	1	Pivot pin	11842				
30	2	Cotter pin	11870				
37	1	Lubricator mounting bracket	51402-12				
38	2	Screw	11838				
39	2	Lockwasher	50008-8-C8D				
40	1	Lubricator	50908-C				
			11836-20				
41	1	Pipe nipple	52008-16-G				
42	1	Coupler nipple	30007735				
44	1	Valve and latch assembly	16822				
45	2	Screw	50008-8-C8D				
46	2	Lockwasher	50908-C				
50	4	Nut	55220-C-H				
51	4	Lockwasher	50920-C				
52	4	Flatwasher	50820-N-C				
53	6	Screw	50012-16-C8D				
54	6	Lockwasher	50912-C				
55	2	Register button	11882				
56	2	Screw	50112-16-C				

Item	Qty	Description	500 ton 14" Part No.
		<b>Alternative views</b>	
		Unit Assembly	13800Y
1	2	90° elbow	56506-4-6-S
2	2	Tube, lower	13809
3	2	Tee	56533-4-6-Ss
4	1	Tube, lower connector	18267
5	1	Hose, lower connector assembly	18269
6	4	90° elbow	56524-4-6-S
7	2	Tube, upper	12632
8	2	Tee, swivel	56525-6-6-S
9	1	Hose, upper assembly	18268
10	1	90° elbow	56506-6-8-S
11	1	Tube, inlet	18270
12	1	45° elbow	56502-8-8-S
13	1	Tee, swivel	56525-6-6-S
14	1	45° elbow	56502-6-6-S
15	1	Tube, upper connector	12634
16	1	Tee, swivel	56525-6-6-S
17	1	Elbow, street	52406-B
18	1	Tee	56533-6-6-S
19	4	Pipe nipple	52002-20-B
20	4	Coupling	940329-1
21	4	Grease fitting	53201
22	2	90° elbow, swivel	56518-6-6-S
23	4	Pipe nipple	56722-02-20



**VARCO 500 TON ELEVATOR/SPIDER 24 1/2" (DRAWING)**





**PARTS LIST VARCO 500 TON ELEVATOR/SPIDER 24 1/2"**

Item	Qty	Description	500 ton 24" Part No.	Item	Qty	Description	500 ton 24" Part No.
1	2	Unit Assembly	15740Y	50	2	Hi-collar lockwasher	51112-C
2	1	Body	15732Y	51	4	Guide keeper	12897
3	1	Removable hinge pin	15785	52	4	Screw	50008-8-C8D
4	1	Stationary hinge pin	15786	53	24	Grease fitting	53201
5	4	Top cover set	15832	54	1	Name plate	15932
5a	2	Screw	50010-20-C8D	55	4	Drive screw	53301-10-6
6	4	Screw	50008-20-C8D	56	1	Slip release plate	15319
6a	4	Lockwasher	51116-C	57	4	Drive screw	53301-4-5
7	2	Lockwasher	51108-C	58	30	Insert retainer bolt	50108-6-S
8	2	Link retainer	82084-1	59	30	Washer	51108-C
9	2	Screw	82088				
10	2	Screw	15261-1				
11	2	Nut	50516-C				
12	2	Cotter pin	51402-16-S				
13	2	Anchor shackle	944515-2				
14	2	Safety sling	18122				
15	2	Leveling beam	75844				
16	6	Slip link	11877				
17	6	Upper slip link pin	11878				
18	12	Cotter pin	51403-12-S				
19	6	Lower slip link pin	11989				
20	6	Linch pin	7887				
21	4	Air cylinder assembly	15754				
22	8	Cylinder retainer	15788				
23	8	Screw	50008-12-C8D				
24	8	Lockwasher	50908-C				
25	4	Pipe plug	53002-02				
26	2	Manual lift bracket	16281				
27	4	Screw	50008-8-C8D				
28	4	Lockwasher	50908-C				
29	2	Manual lift socket	15945				
30	2	Pivot pin	11870				
31	4	Cotter pin	51402-12-S				
32	1	Lubricator mounting bracket	15819				
33	2	Screw	50008-8-C8D				
34	2	Lockwasher	50908-C				
35	1	Lubricator	11836-20				
36	1	Pipe nipple	52008-12-G				
37	1	Coupler nipple	30007735				
38	1	Pipe plug	53002-08-S				
39	1	Valve and latch assembly	16822				
40	1	Spacing block	15787				
41	2	Stud	V17011-1				
42	2	Lockwasher	50908-C				
43	2	Nut	50208-C				
44	4	Nut	55220-C-H				
45	4	Lockwasher	50920-C				
46	4	Flatwasher	50820-N-C				
47	6	Screw	50012-16-C8D				
48	6	Lockwasher	50912-C				
49	2	Register button	11882				
	2	Screw	50112-16-C				

Item	Qty	Description	500 ton 24" Part No.
		<b>Alternative views</b>	
		Unit Assembly	15740
1	4	Connector	56501-4-6-S
	4	Nipple	
	4	Coupling	
2	2	90° elbow	56506-4-6-S
3	2	Hose assembly	16463
4	2	Tee, swivel	56526-6-6-S
5	1	Tube	16515-5
6	1	Tube	16515-4
7	1	45° elbow	56502-4-6-S
8	1	Tube	16520
9	1	Tee	56533-4-6-S
10	1	Tube	16515-2
11	2	Union	56520-6-6-S
12	1	Hose assembly	16512-2
13	2	Tube	16515-3
14	1	Tee	56533-4-6-S
15	1	Tube	16509
16	3	90° elbow, swivel	56518-6-6-S
17	1	Tee	56504-6-6-S
18	1	Tube	16646
19	2	90° elbow	56506-6-6-S
20	1	90° elbow	56506-6-6-S
21	1	Tube	16519
22	1	Tee	56504-6-6-S
23	1	Hose assembly	16512-1
24	1	Tube	16521
25	1	Connector	56501-6-8-S
26	1	Hose, inlet	18827
27	1	90° elbow	56506-8-8-S
28	4	Pipe nipple	52002-20-G
29	4	Coupling	940329-1
30	4	Grease fitting	53201

## VARCO 750 TON ELEVATOR/SPIDER 6-5/8" TO 14"



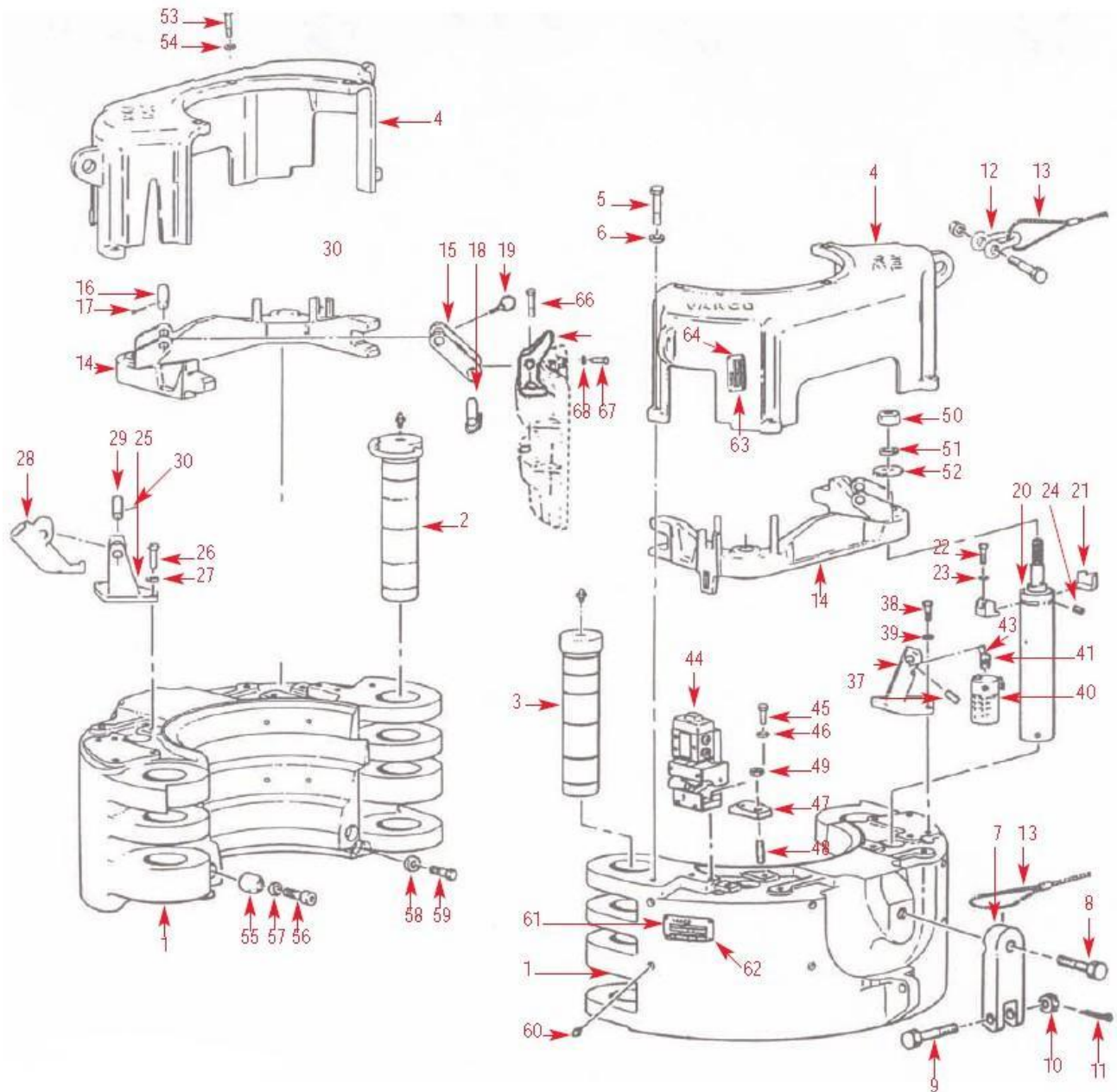
### Varco 750 Ton 6-5/8"-14" HARD TO FIND TOOLS

P/N	DESCRIPTION
16150Y	Elevator/Spider Less Slips and Guides 7500 lbs (3402 kg)
19002	Bell Guide Kit 420 lbs (188 kg)
17163	Spider Adapter Plate 1800 lbs (816 kg)
11881	Airline and Filter Assembly

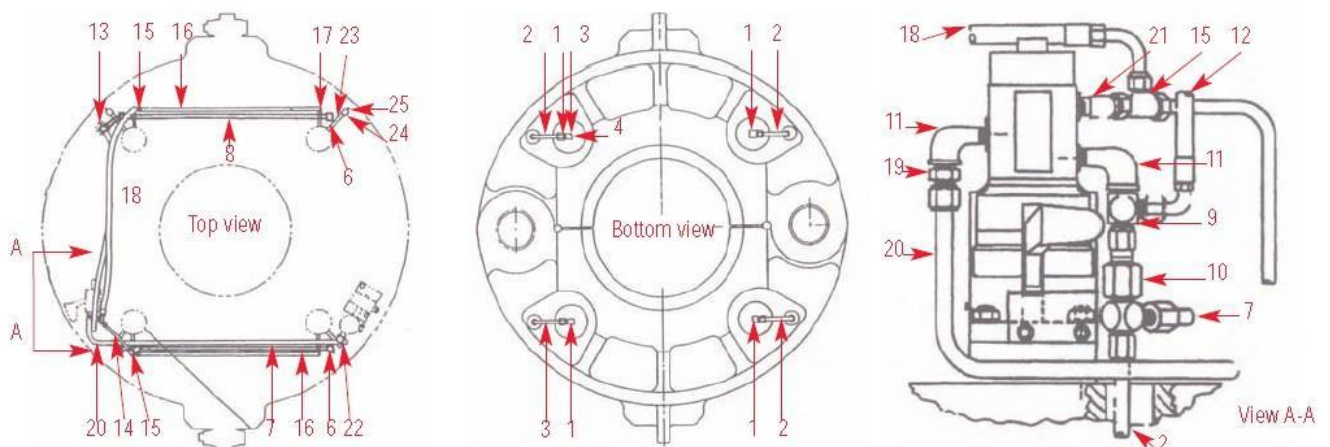
## TECHNICAL SPECIFICATIONS

Casing Size (in)	Elevator Bottom Guide P/N	Spider Top Guide P/N	Slip Sets with Inserts P/N	Insert Set P/N	Qty.
6 5/8	11791	18419-4	16182Y4	2632-24B-60	84
7	11791	18419-4	16182Y8	2623-24B-60	84
7 5/8	11792	18419-5	16182Y7	2633-84	84
7 3/4	11792	18419-5	15182Y21	2649-84	84
8 5/8	11793	18419-6	16182Y6	2640-32B-80	112
8 3/4	11793	18419-6	16182Y20	2650-32B-80	112
9 5/8	11794	18419-7	16182Y3	2633-112	112
9 3/4	71231	18419-15	16182Y19	2649-112	112
9 7/8	71231	18419-15	16182Y18	2649-112	112
10 3/4	11795	18419-8	16182Y5	2640-40B-100	140
10 7/8	11795	18419-8	16182Y17	2650-40B-100	140
11 3/4	11796	18419-9	16182Y2	2637-140	140
11 7/8	11796	18419-9	16182Y16	2651-140	140
13 3/8	11797	18419-10	16182Y10	2637-140	140
13 1/2	71228	18419-12	16182Y12	2652-40B-100	140
13 5/8	71228	18419-12	16182Y11	2653-40B-100	140
13 3/4	71228	18419-12	16182Y13	2655-40B-100	140
14	15939	18419-11	16182Y9	2635-140	140
NOTE!	Numbers followed by the letter "B" indicate beveled inserts (Required at top and bottom of each slot).				

**VARCO 750 TON ELEVATOR/SPIDER (DRAWING)**



**ALTERNATIVE VIEWS**





## PARTS LIST VARCO 750 TON ELEVATOR/SPIDER

Item	Qty	Description	750 ton 14" Part No.
1	2	Unit Assembly	16150Y
2	1	Body	16152Y
3	1	Removable hinge pin	16196
4	1	Stationary hinge pin	16197
5	8	Top cover set	16192
6	8	Screw	50012-20-C8D
7	2	Lockwasher	50912-C
8	2	Link retainer	82084-2
9	2	Screw	82088
10	2	Screw	15261-1
11	2	Nut	50516-C
12	2	Cotter pin	51402-16
13	2	Anchor shackle	944515-2
14	2	Safety sling	18122
15	4	Leveling beam	16153
16	4	Slip link	11877
17	4	Upper slip link pin	11878
18	8	Cotter pin	51403-12-S
19	4	Lower slip link pin	11989
20	4	Linch pin	7887
21	8	Air cylinder assembly	15754
22	8	Cylinder retainer	70959
23	8	Screw	50008-14-C8D
24	4	Lockwasher	50908-C
25	1	Pipe plug	53002-02
26	2	Manual lift bracket	11840
27	2	Screw	50008-8-C8D
28	1	Lockwasher	50908-C
29	1	Manual lift socket	11842
30	2	Pivot pin	11870
37	1	Cotter pin	51402-12
38	2	Lubricator mounting bracket	15819
39	2	Screw	50008-8-C8D
40	1	Lockwasher	50908-C
41	1	Lubricator	11836-20
42	1	Pipe nipple	52008-12-G
43	1	Coupler nipple	30007735
44	1	Pipe plug	53002-08-C
46	1	Valve and latch assembly	16822
47	2	Lockwasher	50908-C
48	1	Spacing block	16493
49	2	Stud	17011
50	4	Nut	50208-C
51	4	Nut	55320-C
52	4	Lockwasher	50920-C
53	4	Flatwasher	50820-N-C
54	6	Screw	50012-16-C8D
	6	Lockwasher	50912-C

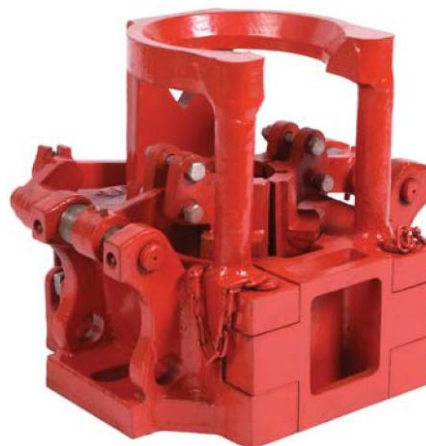
Item	Qty	Description	750 ton 14" Part No.
55	2	Register button	16193
56	2	Screw	50012-16-C
57	2	Hi-collar lockwasher	51112-C
58	4	Guide keeper	12897
59	4	Screw	50008-8-C8D
60	28	Grease fitting	53201
61	1	Name plate	17028
62	4	Drive screw	53301-10-8
63	1	Slip release plate	15319
64	4	Drive screw	53301-4-5
65	4	Slip bracket	15339-2
66	16	Screw	50610-12-C
67		Insert retainer bolt	50108-7-S
		Insert retainer bolt 14"	
		slip assembly	50108-4-S
68		Washer	51108-C

Item	Qty	Description	750 ton 14" Part No.
		<b>Alternative views</b>	
		Unit assembly	16150Y
1	4	Pipe nipple	56722-04-32
2	3	Tube assembly, lower cylinder	75571
3	1	Tube assembly, lower cylinder end	75633
4	4	Connector	56711-4-4-S
5	4	90° elbow	56506-4-6-S
6	2	90° elbow	56542-6-6-S
7	1	Tube, cylinder to cylinder	75570
8	1	Tube, cylinder to cylinder	75569
9	2	Tee	56533-6-6-S
10	1	Connector	56549-6-6-S
11	2	Elbow, street	52406-B
12	1	Hose assembly, cylinder to control	990067-40
13	1	Tee	56504-6-6-S
14	1	Tube assembly, cylinder rod end to control	18101
15	3	Tee, swivel	56525-6-6-S
16	2	Tube, upper	17412
17	4	90° elbow	56524-4-6-S
18	1	Hose assembly, cylinder to control	990067-36
19	1	Connector	56501-6-8-S
20	1	Inlet tube	17405
21	1	45° elbow	56502-6-6-S
22	1	90° elbow	56506-8-8-S
23	4	Pipe nipple	52002-20-G
24	4	Coupling	940329-1
25	4	Grease fitting	53201

## 80-125 TON PNEUMATIC SPIDER C&CHD TYPE

The cavins style C and CHD covers loads up to 80-125ton and ranges in size from 1.315" to 5 1/2". These styles are air operated with full circle wrap around inserts to prevent damage to tubing



### TECHNICAL SPECIFICATIONS

TYPE C&CHD PARTS LIST	
P/N	Description
65000	Type C Spider Assembly
65000HF	Type HD Spider Assembly
65101	Body, Type C Spider
6510HF	Body, Type HD Spider
65102	Gate
65103	Link
65104	Left And Crank Shaft
65105	Right Hand Crank Shaft
65106	Lift Arm
65107	Yoke
65108	Safety Guard
992073-4	Grease Fitting
992005-09	Hex Head Cap Screw
992005-07	Hex Head Cap Screw
992089-09	Hex Nut
992005-01	Hex Head Cap Screw
992051-10	Lock Washer
65114	Door Pin With Chain
992075-144	Lift Arm Set Screw
992161-06	Lift Arm Taper Pin
65122	Shaft Retaining Clip
992073-01	Grease Fitting
65124	Crank Shaft Bushing
65125	Link Bushing
65126	Spacer
992285-MH6-6	Male Disconnect
45053	Pipe Nipple
65135	Safety Latch
65136	Safety Bolt
65140	Hydraulic Cylinder
992107-15	Jam Nut

SLIP BODIES & INSERTS	
P/N	Description
65622	Slip Bodies 1.315"To 3 1/2"
65652-1.315	1.315"FCInserts
65652-1.660	1.660" FC Inserts
65652-1.900	1.990" FC Inserts
65652-2.065	2.062" FC Inserts
65652-1	2 3/8" FC Inserts
65652-2	2 7/8" FC Inserts
65652-3	3 1/2" FC Inserts
65623	Slip Bodies 3 1/2" To 4 1/2"
65653-1	3 1/2" FC Inserts
65653-2	4" FC Inserts
65653-3	4 1/2" FC Inserts
65624-1	5" Solid Slip Bodies
65624-2	5 1/2" Solid Slip Bodies
65116	Bolt
992089-13	Nut
65601	Retainer Ring
992012-44	Cotter Pin

## 100 TON TS STYLE TUBING SPIDER

TS100ton style manual spider comes in two ranges: 3 1/2" bowl and 5 1/2" bowl. The bowl sits differently in the API SQ bushing in table or can be bolted to adapter plate



## TECHNICAL SPECIFICATIONS

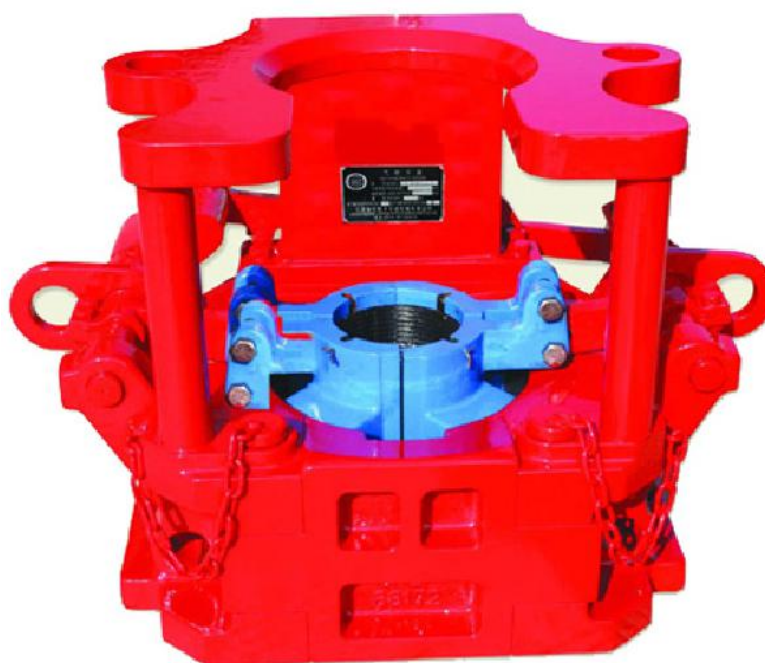
TS 100 STYLE TUBING SPIDER	
P/N	DESCRIPTION
7502-100	Manual Tubing Spider 1.66-3.5 /100ton
7502-103	Manual Tubing Spider 3.5-5.5 /100ton
7502-104	Slip Assy 3 1/2" Less Inserts
7502-70	Slip Assy 5 1/2" Less Inserts
7502-A-5069	Slip Insert 3 1/2" X 3 1/2"
7502-A-5070	Slip Insert 3 1/2" X 2 7/8"
7502-A-5071	Slip Insert 3 1/2" X 2 3/8"
7502-A-26	Slip Insert 5 1/2" X 5 1/2"
7502-D-26	Slip Insert 5 1/2" X 5"
7502-C-26	Slip Insert 5 1/2" X 4 1/2"
7502-G-26	Slip Insert 5 1/2" X 4"
7502-F-26	Slip Insert 5 1/2" X 3 1/2"





## 175 TON PNEUMATIC SPIDER E TYPE

E pneumatic spider is mainly utilized in the petrochemical industry to lock and hold drill pipe and oil pipe for well pulling the petrol oil and natural gas wells. The products are designed and manufactured in accordance with API Spec 7K. All spiders can be either manually, or pneumatically or hydraulically operated to effectively mitigate the labor intensity and increase the work efficiency. With optimal construction, the pneumatic spider is operated in an easy, safe and reliable manner, and believed to be an ideal tool for well pulling. To correctly understand the features and functions of the pneumatic spider, please read the operation instruction manual carefully before using the product.



## TECHNICAL SPECIFICATIONS

Model	OD Of Tubules	Description Of Slip Bodies	Rated Capacity
E	2 3/8"-3 1/2"	3 1/2"	175 TON
	4"-5 1/2"	5 1/2"	
	5 1/2"-7"	7"	
	7 5/8"	7 5/8"(INTEGRAL)	

## NOTE

During the down time , preservation of the pneumatic spider shall be conducted by applying anti-rust grease to each fit surface and paper should be used to cover the greased surfaces to prevent rust. Exposure to the weathering is not allowed because it may accelerate the ageing of the air hosing and cylinder seals.