

套管卡盘及内衬 Casing Spiders and Insert Bowls

绞销式套管卡盘其卡盘体为绞销式结构，内衬为对分式结构，工作时安装在转盘上方，适用于绝大多数下套管作业。产品按API Spec 7K 《钻井和井口操作设备规范》要求设计、制造。

The Hinged Casing Spider has a hinged spider body with a split insert bowl. It is put above rotary table and is suitable for most casings of different sizes. It is designed and manufactured according to API Spec 7K Specification for drilling and well servicing equipment.



HCS型

主要技术参数 Main Technical Parameters

规格型号 Model	适用管径 Applicable Diameter of Tubulars	锥 度 Taper	额定载荷 Rated Capacity (short tons)
JOY13 ³ / ₈ /200	7-8 ⁵ / ₈	1 : 3	200
	9-13 ³ / ₈	1 : 4	
JOY20/200	7-8 ⁵ / ₈	1 : 3	
	9-20	1 : 4	
JOY30/200	16-30	1 : 4	500
JOY36/200	18 ⁵ / ₈ -36	1 : 4	
JOY30/500	16-30	1 : 3	
JOY36/500	18 ⁵ / ₈ -36	1 : 3	
HCS20/500	2 ³ / ₈ -20	1 : 3	



JOY/200



JOY/500



Insert Bowl 内衬6114



Insert Bowl 内衬6115



Insert Bowl 内衬6126



Insert Bowl 内衬6127



Insert Bowl 内衬 JOY 200



Insert Bowl 内衬 JOY 500

转盘补芯及内衬 Master Bushings and Insert Bowls

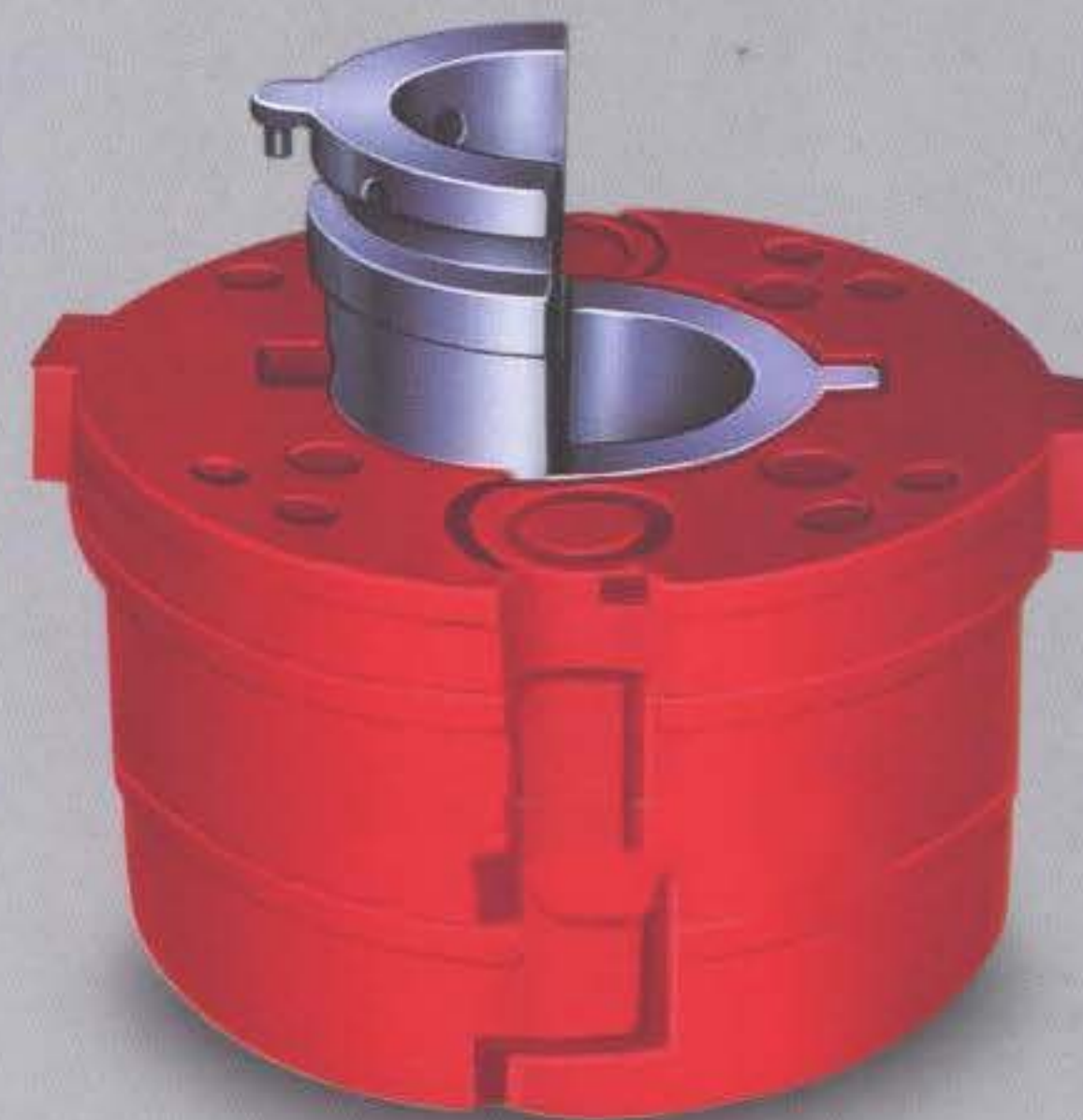
本公司生产17¹/₂in至49¹/₂in的各种转盘补芯和内衬，材料为合金钢铸件，产品按API Spec 7K 《钻井和井口操作设备规范》要求设计、制造。有整体式和剖分式两种结构，分销驱动和四方驱动两种型式，可放入API标准的钻杆卡瓦、钻铤卡瓦、套管卡瓦或滚子补芯。

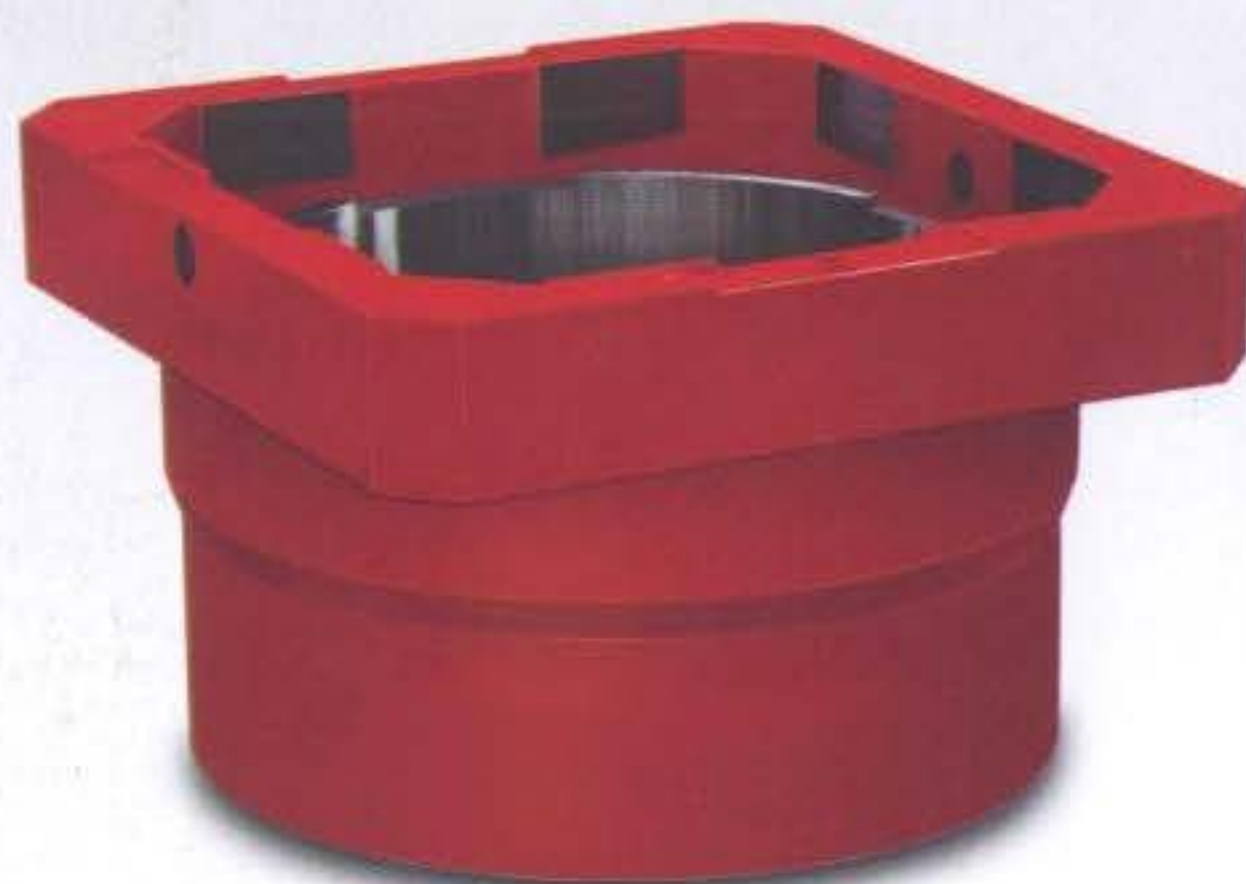
Our company can manufacture master bushings and insert bowls sizing from 17¹/₂ to 49¹/₂ inch. They are cast with high-quality alloy steel and the sizes conform to API Spec 7K Specification for drilling and well servicing equipment. There are two types, pin drive and square drive. API standard rotary slips, drill collar slips, casing slips and roller kelly bushings can be contained in them.

6610



MPCH





MSS



MSPC

主要技术参数 Main Technical Parameters

型 式 Model	适用转盘 Rotary table size (in)	配置内衬 Insert bowl	卡持管径 Tubulars OD (in)
MSS(整体) MSS(Solid)	17 ¹ / ₂ -23	内衬Insert bowl 1011	2 ³ / ₈ -7 ⁵ / ₈
		延伸内衬Extended insert bowl 1024	2 ³ / ₈ -8 ⁵ / ₈
	27 ¹ / ₂	内衬Insert bowl 1022	2 ³ / ₈ -7 ⁵ / ₈
		延伸内衬Extended insert bowl 1025	2 ³ / ₈ -8 ⁵ / ₈
		内衬Insert bowl 1026	9 ⁵ / ₈ -10 ³ / ₄
		内衬Insert bowl 2002	11 ³ / ₄ -13 ³ / ₈
MSS(分体)MSS(Split)	17 ¹ / ₂ -27 ¹ / ₂	—	2 ³ / ₈ -7 ⁵ / ₈
MSPC(整体) MSPC(Solid)	20 ¹ / ₂ -22 ¹ / ₂	内衬Insert bowl 1809	2 ³ / ₈ -8 ⁵ / ₈
		内衬Insert bowl 1902	9 ⁵ / ₈ -10 ³ / ₄
		补芯体Master bushing 1805-1	11 ³ / ₄ -13 ³ / ₈
		补芯体Master bushing 19333	11 ³ / ₄ -13 ³ / ₈
	23-27 ¹ / ₂	No.3 内衬Insert bowl 1810	2 ³ / ₈ -8 ⁵ / ₈
		No.2 内衬Insert bowl 1904	9 ⁵ / ₈ -10 ³ / ₄
		No.1 内衬Insert bowl 1903	11 ³ / ₄ -13 ³ / ₈
MDSP(分体)MDSP(Split)	17 ¹ / ₂ -20 ¹ / ₂	—	2 ³ / ₈ -8 ⁵ / ₈
MSP(分体)MSP(Split)	27 ¹ / ₂	—	2 ³ / ₈ -8 ⁵ / ₈
MPCH	37 ¹ / ₂	No.3 内衬Insert bowl 6608	2 ³ / ₈ -8 ⁵ / ₈
		No.2 内衬Insert bowl 6609	9 ⁵ / ₈ -10 ³ / ₄
		No.1 内衬Insert bowl 6610	11 ³ / ₄ -13 ³ / ₈
	49 ¹ / ₂	MPCH37 ¹ / ₂	2 ³ / ₈ -13 ³ / ₈



转盘补芯附件 Master Bushing Accessories

1. 钻头卸扣器连接板 Bit Breaker Adapter Plate

钻头卸扣器连接板安装在转盘补芯驱动销孔内。13⁹/₁₆in的四方内孔 用于连接钻头卸扣器。适用于MPCH、MDSP、MDSP和MSP型号的转盘补芯。编号1816 适用于23~49¹/₂in的转盘补芯；编号1815适用于17¹/₂~21in的转盘补芯。

2. 吊钩 Lifting Slings

吊钩用于搬运和起吊转盘补芯和内衬。编号021有两个大钩用于起吊和搬运内衬。编号6699有四个大钩用于起吊和搬运补芯。

3. 钻头卸扣器 Bit Breaker

主要用于标准的三牙轮钻头的卸扣。

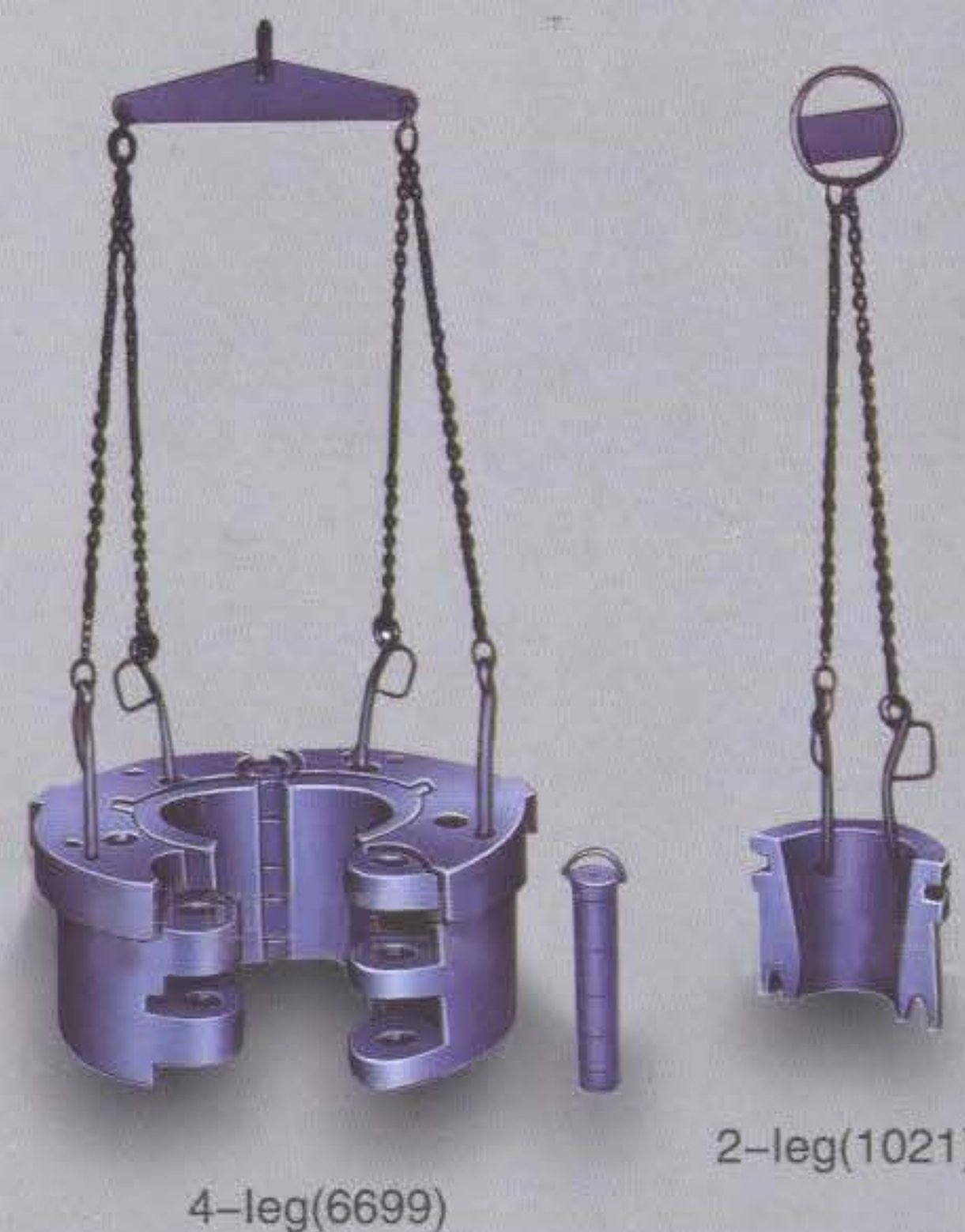
Bit Breaker Adapter Plates are located in the Master Bushing drive pin holes and provide a 13⁹/₁₆ inch square to accommodate Bit Breakers. They are used for MPCH, MSPC, MDSP and MSP. P/N:1816 use for 23~49¹/₂ inch master bushing; P/N 1815 use for 17¹/₂~21 inch master bushing.

Lifting Sling for removing and installing bushings and bowls.

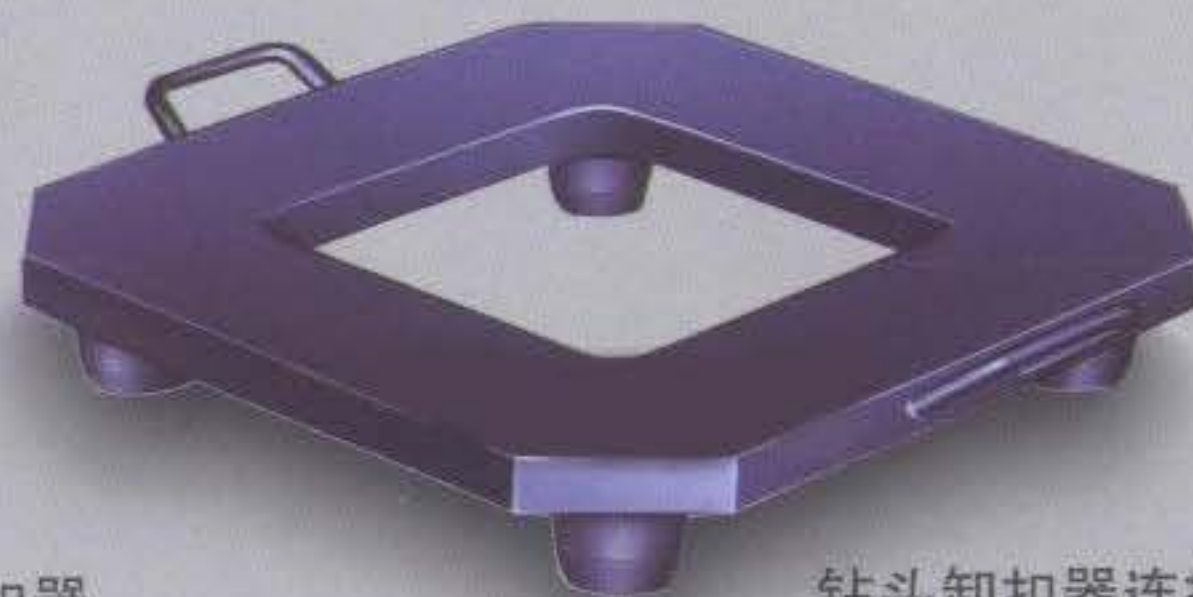
With 2 hooks P/N1021 for removing and installing bowls.

With 4 hooks P/N6699 for removing and installing bushing.

Bit breakers are mostly used for screwing standard 3-cone bit.



钻头卸扣器
Bit Breaker



钻头卸扣器连接板
Bit Breaker Adapter Plate

方钻杆滚子补芯 Roller Kelly Bushings

方钻杆滚子补芯按驱动方式分，有四方传动和轴销传动两种；按类型分，有重型、中型、轻型，适用于17¹/₂in-49¹/₂in的转盘。产品按API Spec 7K 《钻井和井口操作设备规范》要求设计、制造。

Roller Kelly Bushings can be classified as two types based on different ways of drive, square drive and pin drive. Also they can be classified as three types based on different styles, heavy, medium and light-duty. They are used for 17¹/₂ to 49¹/₂ inch rotary tables. They are designed and manufactured according to API Spec 7K Specification for drilling and well servicing equipment.

主要技术参数 Main Technical Parameters

规格型号 Model	类 型 Type	驱动方式 Drive Way	适用方钻杆规格 Applicable Size of Kelly (in)	
			四 方 Square	六 方 Hex
HDS	重 型 Heavy Duty	四方传动 Square Drive	2 ¹ / ₂ -6	3-6
27-HDP		轴销传动 Pin Drive	2 ¹ / ₂ -6	3-6
20-HDP			2 ¹ / ₂ -6	3-6
(4KRVS) RTM4	中 型 Medium Duty	四方传动 Square Drive	2 ¹ / ₂ -5 ¹ / ₄	3-4 ¹ / ₄
RTS4	轻 型 Light Duty		2 ¹ / ₂ -4 ¹ / ₄	3-4 ¹ / ₄

