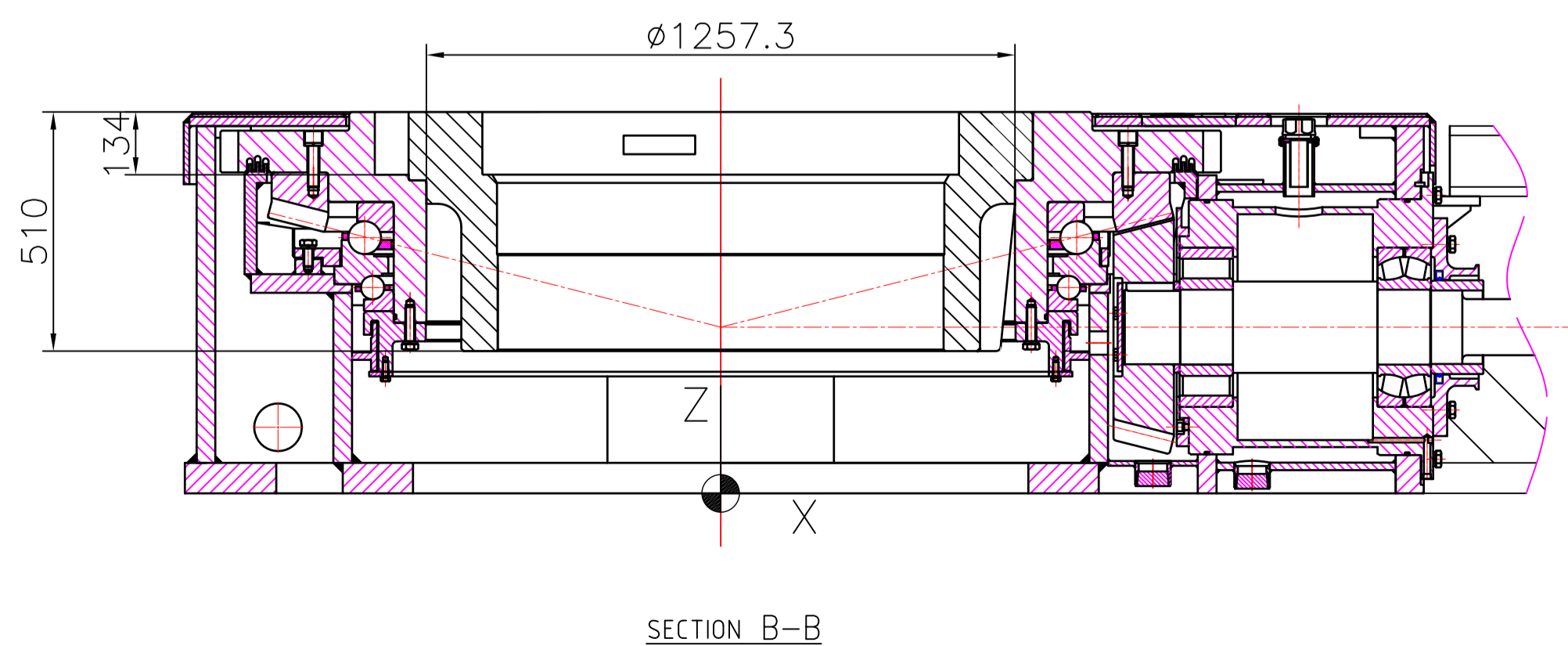
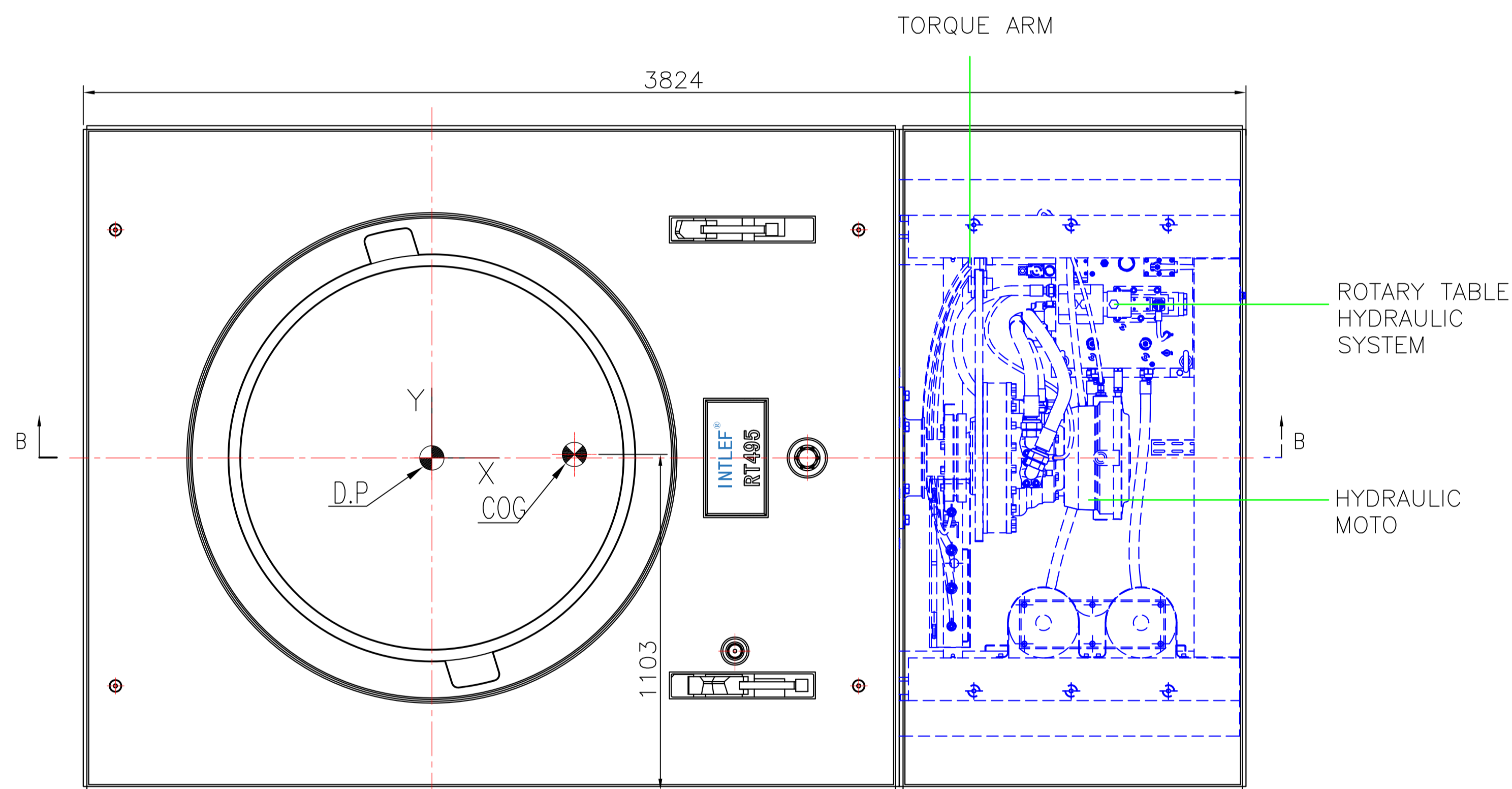


VIEW A



SECTION B-B

TECHNICAL PARAMETERS:

1. ROTARY TABLE

TABLE OPENING: 1257.3MM(49-1/2");

MAX SPEED: 20RPM

DRIVE RATIO: 3.95:1

MAXIMUM TORQUE: 49000N.M

OIL TANK CAPACITY: 26 GALLONS

MAXIMUM DYNAMICAL LOADING: 680T

MAXIMUM STATIC LOADING: 907T

2. HYDRAULIC SYSTEM

MAXIMUM FLOW: 350L/MIN

MAX. PRESSURE: 21MPA

CLEANNESS OIL: NAS8

3. HYDRAULIC MOTOR

DISPLACEMENT: 4400CM³/r

RATED SPEED: 180RPM

Class Define						HYDRAULIC ROTARY TABLE		TF0079000	
P	PRIME						RT495	MATERIAL	REV. NO.
S	SECONDARY							---	A
M	MAJOR	DESIGN	PROCESS				PROJECT NO.	TOTAL	13500
		CHECKED	STANDARD				---	1	1.1
X	VERIFIED		APPROVED				DATE	1	2020-10-15

WE RESERVE THE PROPRIETARY RIGHT AND COPYRIGHT TO THIS DRAWING. IT MAY NOT BE USED OR MADE AVAILABLE TO THIRD PARTIES WITHOUT INTLEF'S CONSENT.