



TQ340/35Y₂ POWER CASING TONG

AXONOMETRIC DRAWING

JIANGSU RUSHI MACHINERY CO.,LTD

Add: No.60 Weihai North-Road, Bencha, Rudong, Jiangsu, China
P.C.: 226406 Tel: 0513-84890912 84890937 Fax: 0513-84821168
<http://www.jsrushi.com> E-mail: rszgj@jsrushi.com
(Pre-Rudong Petroleum Machinery Factory)

I Parts List of TQ340-35Y₂ Casing Tong (see Fig.1)

No.	Description	Part No.	Unit	Qty.	U.W.
1	Right door	56.510.00B	pc	1	
2	Pin 4*30	GB91-86	pc	1	
3	Pin shaft B18*94	GB882-86	pc	1	
4	Tension spring	56.510-01B	pc	2	
5	Inner hook	56.512.00B	pc	1	
6	Left door	56.513.00B	pc	1	
7	Door locating shaft	56.510-05	pc	4	
8	Washer 27	GB93-87	pc	4	
9	Bearing RNA4904	GB5801-94	pc	4	
10	Spacer	56.510-06	pc	2	
11	Shaft	22.511-07	pc	2	
12	Washer 24	GB93-87	pc	22	
13	Nut 24	GB6180-86	pc	22	
14	Grease cup M10*1	JB/T7940.1-95	pc	32	
15	Static gasket	56.540-03	pc	22	
16	Dynamic gasket	56.540-06	pc	22	
17	Big roller shaft	56.540-04A	pc	22	
18	Bearing 644907(φ38*φ58*32)		pc	22	
19	Outer sleeve	56.540-02	pc	22	
20	Washer	56.540-01	pc	22	
21	Stop ring 20	GB894.1-86	pc	22	
22	Cam	56.600-04	pc	2	
23	Screw M10*16	GB70-85	pc	4	
24	Pin 10*20	GB119-86	pc	8	
25	Pin 10*25	GB119-86	pc	14	
26	Pin 6*30	GB879-86	pc	32	
27	5 ¹ / ₂ "jaw assy.	56.610.00	pc	2	
	7"jaw assy.	56.620.00	pc	2	
	9 ⁵ / ₈ " jaw assy.	56.630.00	pc	2	
	13 ³ / ₈ "jaw assy.	56.640.00B	pc	2	
28	Die	24.100-03	pc	16	
29	Roller shaft	56.610-02	pc	6	
	Roller shaft	56.640-02A	pc	2	
30	Roller φ100	56.610-03	pc	2	
	Roller φ75	56.620-02	pc	4	
	Roller φ50	56.640-03	pc	2	
31	Screw M10*16	GB70-85	pc	12	
32	Fixed rod	24.120-04	pc	1	
33	Bolt M10*30	GB5780-86	pc	2	

No.	Description	Part No.	Unit	Qty.	U.W.
34	Top rod	24.120-01	pc	1	
35	Spring	24.120-02	pc	1	
36	Spring seat	24.120-03	pc	1	
37	Spacer sleeve	24.120-05	pc	2	
38	Upper cover plate	52.210-01	pc	1	
39	Bolt M10*30	GB5781-86	pc	40	
40	Locating sleeve	24.230-02	pc	1	
41	Locating sleeve	56.605-02	pc	2	
42	Bolt M20	24.230-01	pc	1	
43	Bolt M12	56.605-01	pc	2	
44	Small roller shaft	56.650-02	pc	38	
45	Shaft sleeve	56.650-01	pc	38	
46	Nut M12	GB41-86	pc	42	
47	Grease cup M6	JB/T7940.1-95	pc	38	
48	Nut M10	GB6170-86	pc	4	
49	Washer 10	GB96-85	pc	2	
50	Brake spring	24.110-06	pc	2	
51	Fixed block	24.110-04	pc	2	
52	Brake band	56.521.00	pc	1	
53	Bolt M10*80	GB5780-86	pc	2	
54	Upper jaw rack	56.660.00	pc	1	
55	Bolt M16*25	GB5781-86	pc	2	
56	Bolt M16*45	GB5781-86	pc	4	
57	Left seat	52.310.00	pc	1	
58	Adjusting screw	14.05-05	pc	2	
59	Nut M16	GB6170-86	pc	2	
60	Sledge pin	24.210-01	pc	1	
61	Handle	24.210-05	pc	1	
62	Screw	24.210-02	pc	1	
63	Washer 16	GB95-85	pc	1	
64	Connection plate	24.210-03	pc	1	
65	Nut M20	GB41-86	pc	2	
66	Washer 20	GB93-87	pc	2	
67	Fixed rod	24.210-04	pc	1	
68	Clip for rake band	24.110-05	pc	2	
69	Jaw shaft	24.100-02	pc	2	
70	Screw rod M20	01.05-16M	pc	2	
71	Nut M20	GB6170-86	pc	2	
72	Suspension rod	52.320.00A	pc	1	
73	Pin 6.3*40	GB91-86	pc	1	

No.	Description	Part No.	Unit	Qty.	U.W.
74	Screw rod	22.210-02	pc	1	
75	Rod shaft	22.210-03	pc	1	
76	O ring 30*3.1	JB/ZQ4224-97	pc	5	
77	Relief valve	DB20-1-50/31.5	pc	1	
78	Hinged bolt G3/4	52.410-01	pc	2	
79	Hinged joint M36*2	52.410-02	pc	2	
80	Valve panel	52.480-01	pc	1	
81	Angle joint NPT3/4-M36*2	52.480-04A	pc	1	
82	Angle joint NPT1-M42*2	52.480-05A	pc	1	
83	Fixed plate	52.481.00A	pc	1	
84	Screw M6*8	GB65-85	pc	3	
85	Dust cover	24.140-01	pc	1	
86	NPT1 self-sealing joint		pc	1	
87	NPT1 ¹ / ₄ self-sealing joint		pc	1	
88	Torque-measuring assy.	24.400.00D	set	1	
89	Washer 27	JB982-77	pc	6	
90	Switch joint	52.400-07A	pc	2	
91	Washer 33	JB982-77	pc	3	
92	Hydraulic motor	BJM1-300HP1	pc	1	
93	Joint NPT3/4-NPT1	24.610-03D	pc	1	
94	Joint NPT1-NPT1 ¹ / ₄	52.480-03	pc	1	
95	Pressure hose with A-type joint 22III*340 (double 90°)	JB1885	pc	2	
96	Pressure hose with A-type joint 32 I *450 (double 90°)	JB1885	pc	1	
97	O ring 35*3.1	JB/ZQ4224-97	pc	2	
98	Pressure hose with A-type joint 22III*420 (double 90°)	JB1885	pc	1	
99	Joint G3/4-M36*2	59.420-01A	pc	1	
100	House for pressure gauge	52.431.00A	pc	1	
101	Pressure gauge (0-25Mpa)	YN-60	pc	1	
102	Nut M24*1.5	52.430-05A	pc	1	
103	Joint to pressure gauge 头	52.430-04A	pc	1	
104	Nut M20*1.5	24.420-16	pc	1	
105	Angle joint	52.430-03A	pc	1	
106	Seal gasket	24.600-09	pc	1	
107	Copper gasket	24.420-15	pc	1	
108	Anti-wear plate	52..210-03	pc	1	
109	Long joint M36*2-M30*2	52.410-03C	pc	2	
110	Washer 30	JB982-77	pc	2	
111	Multi-way reverse valve	DL-F20L-T/Y-T/0	pc	1	
112	Joint M33*2-M42*2	52.440-03	pc	1	

No.	Description	Part No.	Unit	Qty.	U.W.
113	Bolt M12*50	GB/T5781-2000	pc	4	
114	Washer 12	GB/T95-2002	pc	13	
115	Double-screw bolt M12	52.400-01	pc	4	
116	Fixed pillar	52.400-02	pc	4	
117	Gear-shifting device	52.100.00C	set	1	
118	Pin 5*40	GB91-86	pc	2	
119	Nut M24	GB6172-86	pc	2	
120	Right seat	52.330.00	pc	1	
121	Bolt M24*85	GB31.1-88	pc	2	
122	Nut M24	GB6170-86	pc	10	
123	Washer 24	GB93-87	pc	10	
124	Screw M6*8	GB70-85	pc	4	
125	Washer 6	GB93-87	pc	4	
126	Pin 6*20	GB119-86	pc	2	
127	Small shaft	24.140-03	pc	1	
128	Speed-measuring gear	24.140-04	pc	1	
129	Bearing 6004	GB/T276-94	pc	2	
130	Stop ring 42	GB893.1-86	pc	1	
131	Bearing supporting sleeve	24.140-05	pc	1	
132	Nut M16	GB41-86	pc	1	
133	Washer 16	GB93-87	pc	1	
134	Turning arm	52.400-06	pc	4	
135	Static washer	22.540-05	pc	10	
136	Centralizing wheel shaft	26.230-01	pc	10	
137	Bearing 4624906	GB5801-86	pc	10	
138	Centralizing wheel	26.230-02	pc	10	
139	Dual gear assy.	52.220.00	pc	1	
140	Idler assy. I	52.230.00A	pc	1	
141	Idler assy. II	56.550.00A	pc	1	
142	Pinshaft	24.400-05	pc	1	
143	Pin 6.3*40	GB/T91	pc	1	
144	Rear plate	52.212.00	pc	1	
145	Side plate	52.211.00D	pc	1	
146	Check hole	56.530-04	pc	2	
147	Sealing gasket	56.530-05	pc	2	
148	Bolt M10*20	GB5780-86	pc	4	
149	Handle	24.100-01	pc	6	
150	Lower cover plate	52.210-02	pc	1	
151	Notched gear	56.600-03A	pc	1	
152	Lower jaw rack	56.600-01	pc	1	

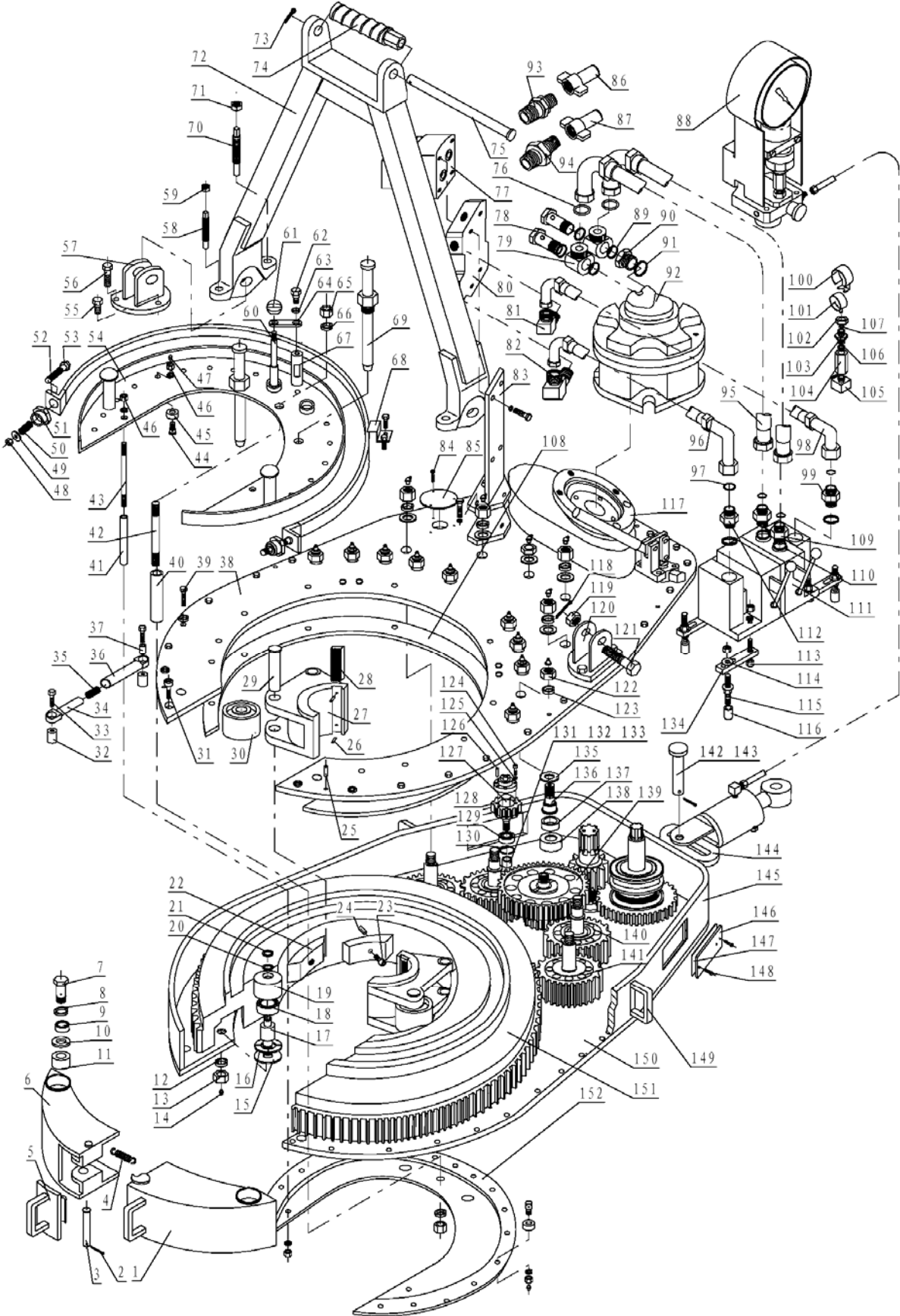


Fig.1 TQ340-35Y₂ Casing Tong

II Parts List of gear-shifting device (see Fig.2)

No.	Description	Part No.	Unit	Qty	U.W.
1	Screw M10×30	GB/T70.1	pc	16	
2	Grease cup M10×1	JB/T7940.1	pc	5	
3	Bearing cap	52.100-10C	pc	1	
4	Bearing 22211C/W33	GB/T288	pc	2	
5	Gasket	52.100-08C	pc	1	
6	Dual gear shaft	52.100-09C	pc	1	
7	Bearing sleeve	52.100-07C	pc	1	
8	Pin 8×10	GB/T119.1	pc	1	
9	Box	52.100-06C	pc	1	
10	Gear	52.100-05C	pc	1	
11	Stop ring	52.100-04C	pc	1	
12	Screw M10×20	GB/T32.1	pc	2	
13	Box cover	52.100-03C	pc	1	
14	Screw M12×130	GB/T70.1	pc	5	
15	Pin 10×24	GB/T119.1	pc	1	
16	Bearing cap	52.100-24C	pc	1	
17	Sleeve	52.100-01C	pc	1	
18	Screw M10×25	GB/T70.1	pc	4	
19	Screw M12×35	GB/T5782	pc	5	
20	Spline sleeve	52.100-02C	pc	1	
21	Upper shaft washer	52.100-23C	pc	1	
22	Small gear	52.120-01C	pc	1	
23	Gear	52.120-02C	pc	1	
24	Spacer sleeve	52.100-20C	pc	3	
25	Bearing	K45×53×20	pc	4	
26	Upper spacer washer	52.100-13C	pc	1	
27	Output shaft	52.100-12C	pc	1	
28	Clutch gear sleeve	52.100-15C	pc	1	
29	Lower spacer washer	52.100-11C	pc	1	
30	Bearing	K50×58×20	pc	2	
31	Stop ring 110	GB/T894.1	pc	1	
32	Gear	52.110-01C	pc	1	
33	Big gear	52.110-02C	pc	1	
34	Key	52.110-03C	pc	1	

TQ340/35Y₂ Power Casing Tong

No.	Name	Part No.	Unit	Qty	U.W.
35	Lower shaft washer	52.100-14C	pc	1	
36	Bearing 22210C/W33	GB/T288	pc	2	
37	Bearing cap	52.100-16C	pc	1	
38	Lower guide sleeve	52.100-18C	pc	1	
39	Nut M22×1.5	GB/T6173	pc	2	
40	Dial	52.100-17C	pc	1	
41	Dial shaft	52.100-19C	pc	1	
42	Screw M10×1×30	GB/T5786	pc	1	
43	Nut M10×1	GB/T6173	pc	1	
44	Spring	26.100-14	pc	1	
45	Steel ball 8.5	GB/T308	pc	1	
46	Upper guide sleeve	52.100-21C	pc	1	
47	Connection piece	59.280-16	pc	2	
48	Support	59.280-15	pc	1	
49	Pin shaft B10×40	GB/T882	pc	1	
50	Handle	52.131.00C	pc	1	
51	Pin shaft B10×25	GB/T882	pc	2	
52	Pin 3.2×20	GB/T91	pc	3	

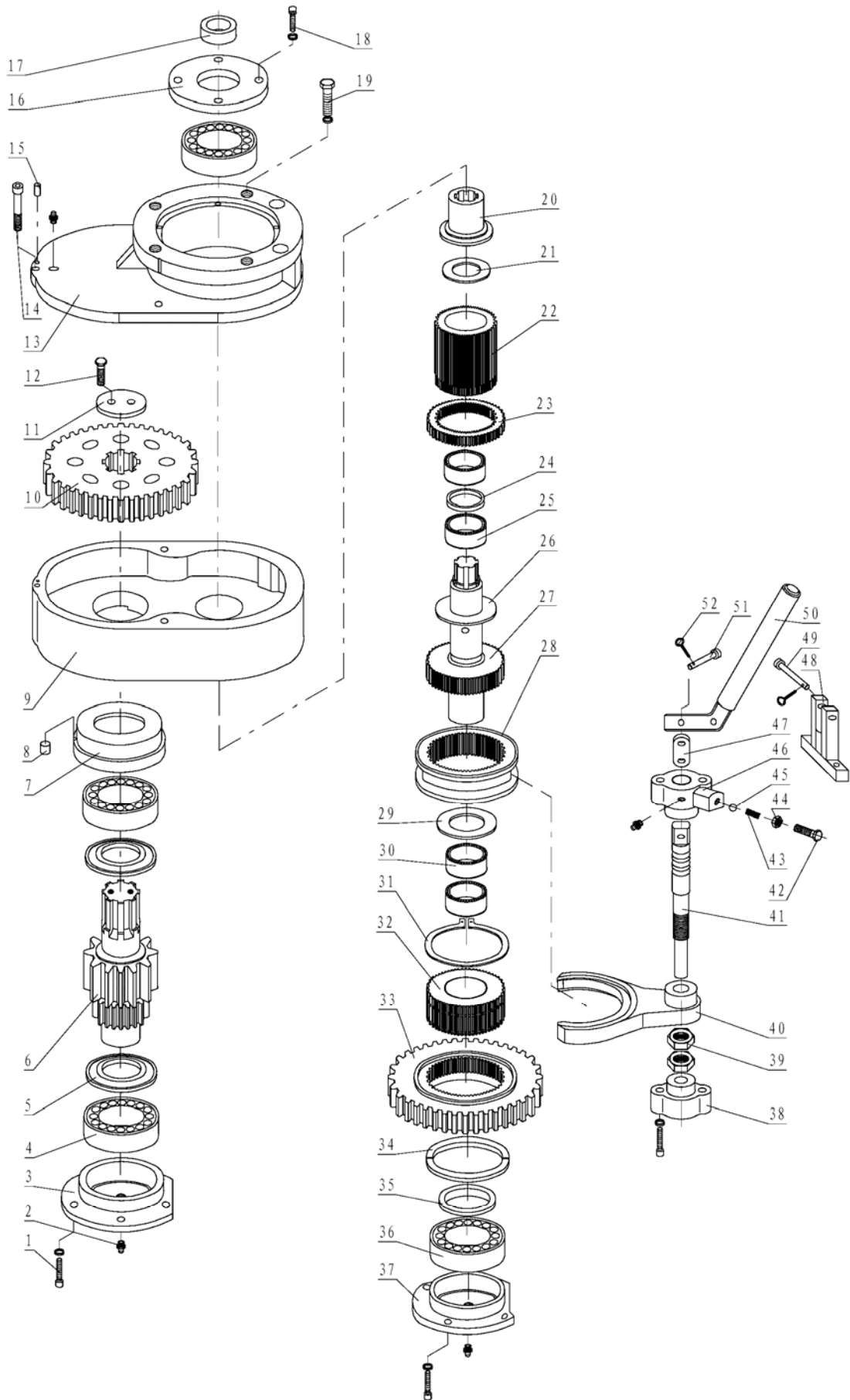


Fig .2 gear-shifting device

III Parts List of Hydraulic Torque-measuring Assy. (see Fig.3)

No.	Description	Part No.	Unit	Qty	U.W.
1	gauge guard	24.430.00C	pc	1	
2	pressure-torque gauge	YN150 (45kN.m)	pc	1	
3	gauge clamp	24.400-01A	pc	1	
4	joint for gauge	24.420-08	pc	1	
5	copper gasket	24.420-15	pc	1	
6	lock nut M20×1.5	24.420-16	pc	1	
7	joint M20×1.5	24.420-10A	pc	1	
8	manual pump	SZB-L	pc	1	
9	O Ring22×2.4	JB/ZQ4224-97	pc	1	
10	stop valve	LF0400	pc	1	
11	screw M8×10	GB/T5781-2000	pc	2	
12	outlet joint M14×1.5	24.420-09	pc	1	
13	body	24.421.00D	pc	1	
14	plug NPT1/4	JB/ZQ4447-97	pc	1	
15	mounting seat	24.410.00A	pc	1	
16	screw M18×16	GB/T75-2000	pc	1	
17	welded sleeve	24.400-01A	pc	1	
18	ladder ring 65	GSD0650	pc	1	
19	pin	24.400-05	pc	1	
20	pin 6.3×40	GB/T91-2000	pc	1	
21	cylinder end	20.13.10-05A	pc	1	
22	piston	20.13.10-03	pc	1	
23	copper sleeve	20.13.10-02	pc	1	
24	stop ring	GB1235-76	pc	1	
25	screw M8×12	GB78-85	pc	1	
26	pressure plug	ZB21.19-67	pc	1	
27	liner	20.13.10-04	pc	1	
28	screw M8×8	GB78-85	pc	1	
29	eye-nut	20.13.10-01	pc	1	
30	pressure hose 6.3 II ×1000	JB/ZQ4427-86	pc	1	
31	joint	24.400-03	pc	1	
32	screw M10×25	GB/T5781-2000	pc	4	
33	washer 10	GB/T93-87	pc	4	
34	seal gasket	24.420-07	pc	1	
35	screw M8×80	GB/T70.1-2000	pc	2	
36	screw M6×50	GB/T70.1-2000	pc	4	

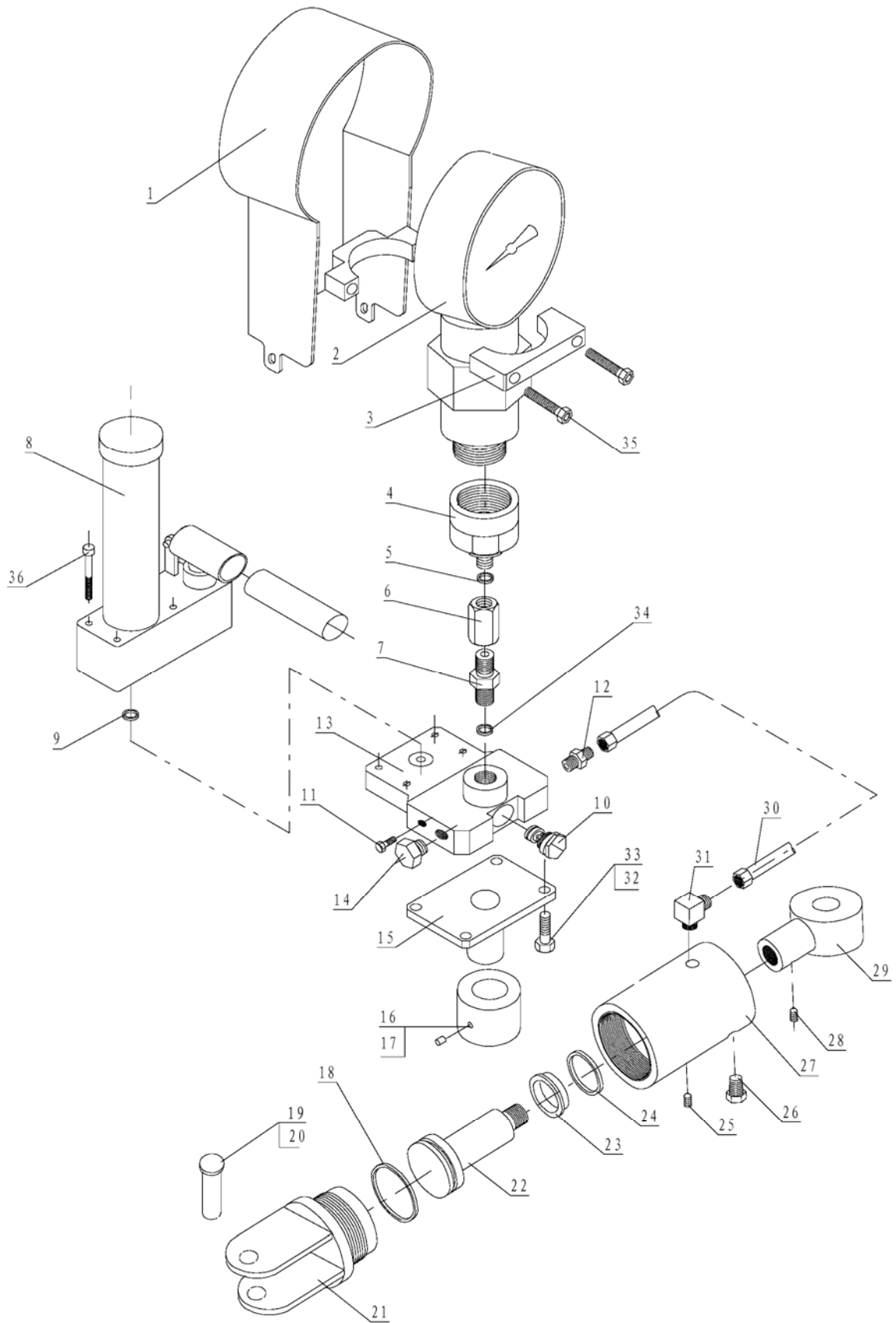
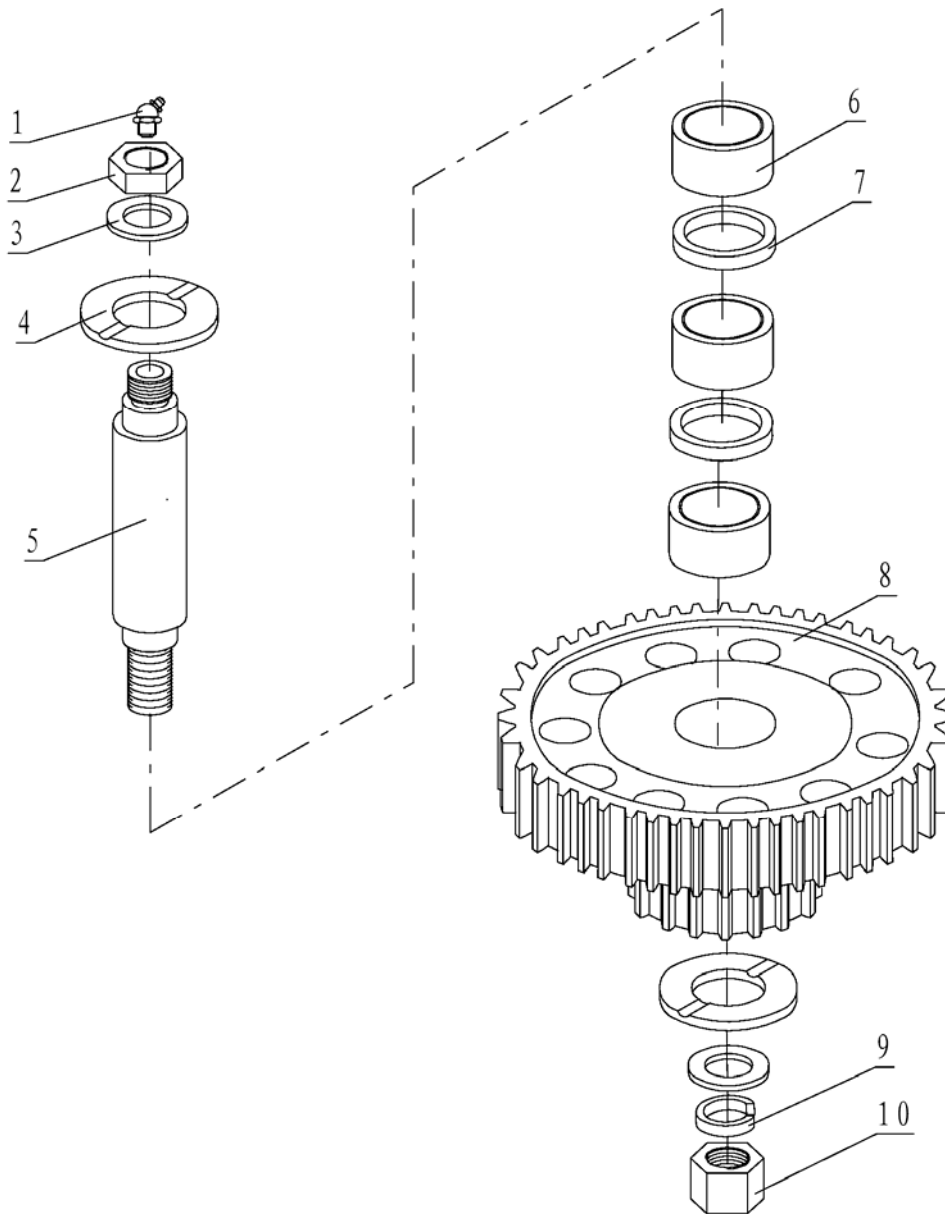


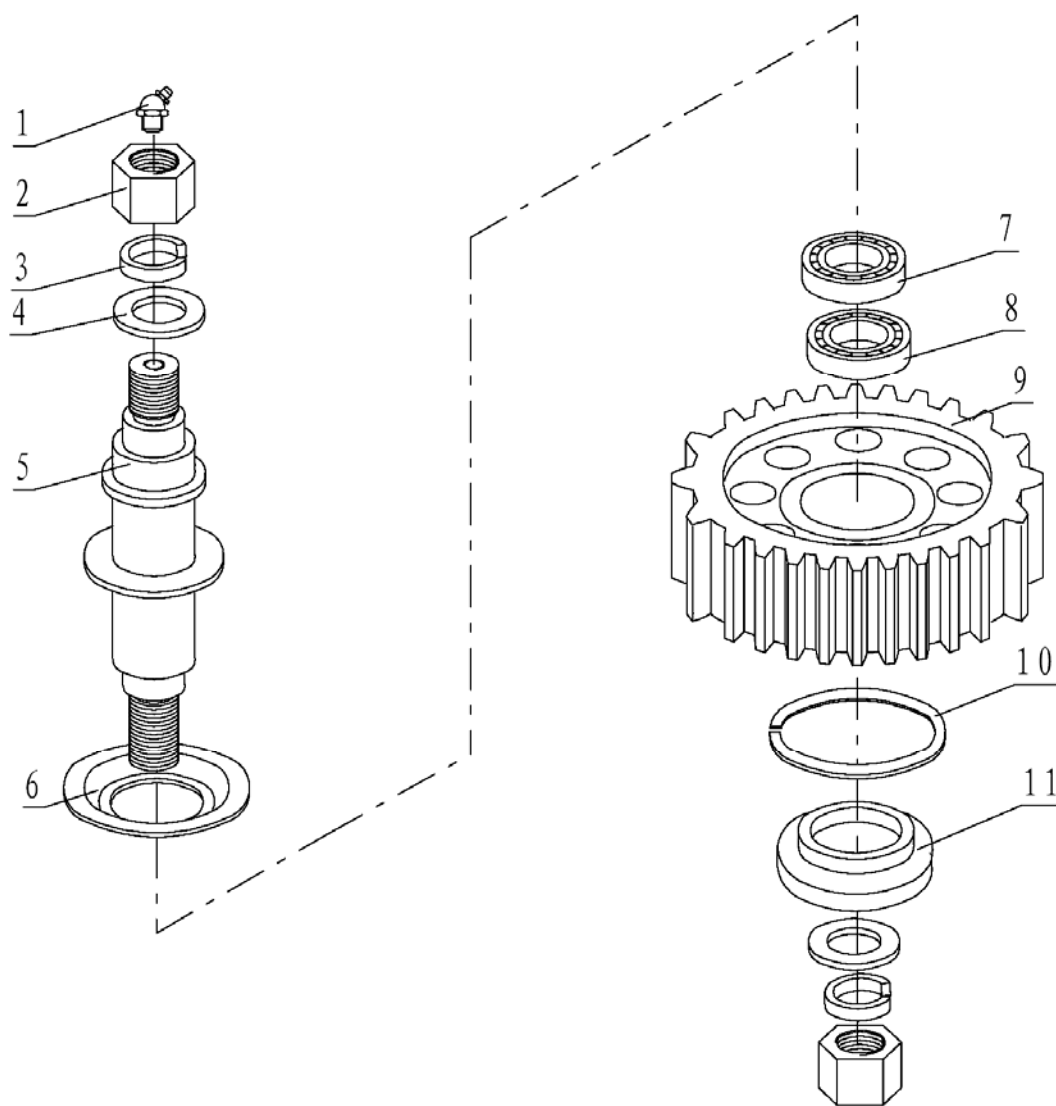
Fig. 3 Torque-measuring Assy.



IV Parts List of Dual Gear Assy.

No.	Description	Part No.	Unit	Qty.	U. W.
1	Grease cup M10×1 (45°)	JB/T7940.2-95	pc	1	
2	Nut M24	GB/T6172-86	pc	1	
3	Washer 24	GB95-85	pc	2	
4	Thrust ring	56.550-01	pc	2	
5	Dual gear shaft	56.570-04	pc	1	
6	Bearing 4084106 (40.1×55×25)	GB5801-86	pc	3	
7	Spacer ring	56.550-02	pc	2	
8	Dual gear	52.221.00A	pc	1	
9	Washer 24	GB93-87	pc	1	
10	Nut M24	GB6170-86	pc	1	

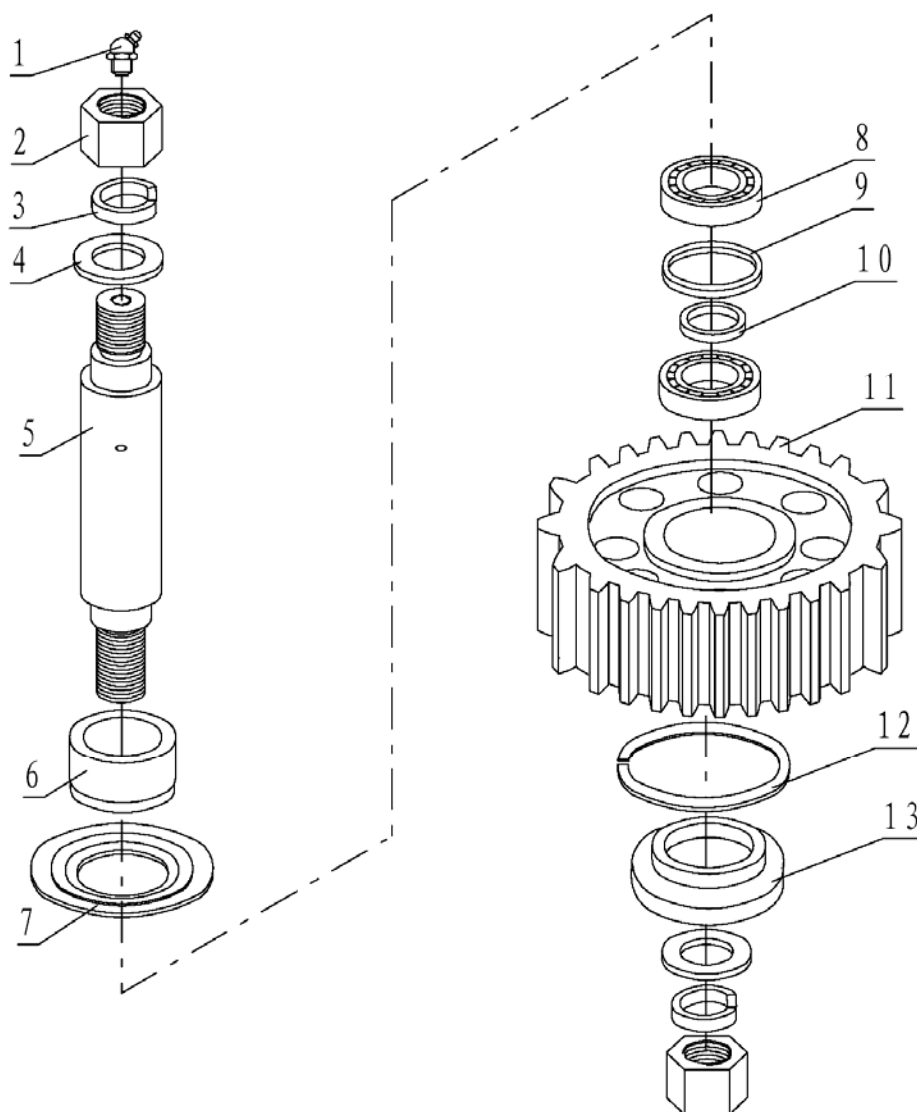
Fig.4 Dual Gear Assy.



V Parts List of Idler Assy. I

No.	Description	Part No.	Unit	Qty.	U.W.
1	Grease cup M10×1 (45°)	JB/T7940.2-95	pc	1	
2	Nut M24	GB/T6170-2000	pc	2	
3	Washer 24	GB93-87	pc	2	
4	Washer 24	GB95-2002	pc	2	
5	Idler shaft I	52.230-01A	pc	1	
6	Oil baffle	52.230-02A	pc	1	
7	Bearing NJ209E	GB/T283-94	pc	1	
8	Bearing 22209C/W33	GB/T288-94	pc	1	
9	Idler I	56.560-03A	pc	1	
10	Stop ring 85	GB/T893.1-86	pc	1	
11	Lower thrust ring	56.550-07A	pc	1	

Fig.5 Idler Assembly I



VI Parts List of Idler Assy. II

No.	Description	Part No.	Unit	Qty.	U.W.
1	Grease cup M10×1 (45°)	JB/T7940.2-95	pc	1	
2	Nut M24	GB/T41-2000	pc	2	
3	Washer 24	GB/T93-1987	pc	2	
4	Washer 24	GB/T95-2002	pc	2	
5	Idler shaft II	56.550-03A	pc	1	
6	Upper thrust ring	56.550-01A	pc	1	
7	Oil guardplate	56.550-02A	pc	1	
8	Bearing 22209C/W33	GB/T288-1994	pc	2	
9	Outer spacer	56.550-05A	pc	1	
10	Inner spacer	56.560-06A	pc	1	
11	Idler II	56.550-04A	pc	1	
12	Stop ring 85	GB/T983.1-1986	pc	1	
13	Lower thrust ring	56.550-07A	pc	1	

Fig.6 Idler Assembly II