

Hydraulic Inspection

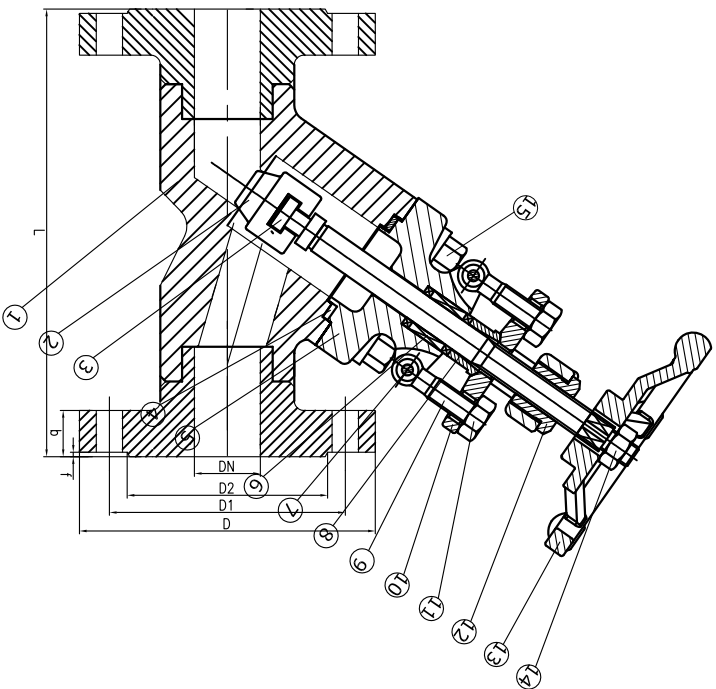
Test Pressure	SHELL	9.60Mpa
	SEAL	7.04Mpa
Temperature	AIR	0.60Mpa
	Medium	-29℃~425℃ Water, Steam, Oil etc

Technical Standard

Design	DIN 3356
Face to Face	DIN 3202 F1
Flange End	DIN2543-2545
T&Rressure	DIN 2401
Inspection&Test	DIN 3230

Material List

16	Handwheel Lock Nut	Cast Steel	ASTM A216 WCB
15	Handwheel	Steel	ASTM A47
14	Stem Nut	Steel	ASTM A47
13	Gland Nut	Cast Steel	ASTM A216 WCB
12	Packing Gland	Forged Steel	ASTM A105
11	Gland Bolt	Cast Steel	ASTM A216 WCB
10	Bushing	Stainless Steel	ASTM SS410
9	Pin	Cast Steel	ASTM A216 WCB
8	Stud Bolt	Cast Steel	ASTM A216 WCB
7	Packing	Graphite	
6	Bonnet	Forged Steel	ASTM A105
5	Gasket	Stainless Steel+Graphite	SS304+Graphite
4	Stem	Forged Steel	ASTM A105
3	Disc	Stainless Steel	ASTM SS410
2	Seat Ring	Forged Steel+STL	ASTM A105+STL
1	Body	Forged Steel	ASTM A105



MAIN DIMENSIONS

SIZE	DN mm	L	D	D1	D2	n-d	b	f	H	Do	Weight kgs
1/2"	15	170	105	75	55	4*14	20	2	160	100	6.50
3/4"	20										
1"	25	210	140	100	78	4*18	24	2	190	125	8.00
1-1/4"	32										
1-1/2"	40										
2"	50	300	180	135	108	4*22	26	2	260	150	18.20
2-1/2"	65										
3"	80										
4"	100										
5"	125										
6"	150										
7"	175										
8"	200										
10"	250										
12"	300										

Product Name FORGED STEEL Y TYPE GLOBE VALVE J45Y PN64

Drawing NO.	CHKD	CHKD	APP'D
RH-GLV-D11	Tom	Cathrine	Coco



QINGDAO RONGHANG MARINE VALVE MANUFACTURING CO.,LTD

www.marine-valve.com