



**兰州兰石石油装备工程股份有限公司**  
**LANZHOU LS PETROLEUM EQUIPMENT ENGINEERING CO., LTD.**

JC28 DRAWWORKS  
CZ106.09. 00TC

Rev.01

**PARTS LIST**



Lanzhou LS Petroleum Equipment Engineering Co., Ltd

Dec. 2018





## Preface

This parts list is specially prepared for JC28-DRAWWORKS.

When placing an order for the Unit's components or parts, the customer shall indicate the drawing No., description and number of such components or parts as well as the model and serial No. of the unit, so as to receive your components or parts required after any changes arise in the design.

The following symbols used in this parts list are as follows:

\* Refers to the parts not shown in this parts list.



## 目 录 Contents

1. 主滚筒总成 Main drum assembly.....	1
2. 链条护罩总成 Chain shield.....	5
3. 角传动箱 Angle drive box.....	7





序号 No.	代 号 Part No.	名 称	Description	数量 Qty
1	CZ106.05.10.01	轴套	Shaft sleeve	1
2	CZ106.04.10.05	键	key	2
3	CZ106.04.10.04	联接齿轮	Connection gear	1
4	GB/T80-2000	螺钉	Nut bolt	6
5	WCB324	水冷刹车	Water-cooled brake	1
6	CZ106.04.12.00	护罩	Cover	1
7	CZ106.04.10.03	垫片	Shim	1
8	CZ106.04.10.06	轴套	Shaft sleeve	1
9	HG4-692-67	油封	Oil seal	2
10	GB/T288-1994	轴承 22228C	bearing	2
11	CZ106.04.13.00	轴承盒连接盘	Bearing box connection plate	1
12	GB/T5781-2000	螺栓	Blot	4
13	GB/T93-1987	垫圈	Washer	32
14	CZ106.04.10.29	护罩联结板	Shield connecting board	4
15	CZ106.04.21.00	黄油润滑管线	Grease lubrication line	2
16	GB/T5781-2000	螺栓	Blot	24
17	CZ106.04.10.07	轴承端盖	Bearing cap	1
18	CZ106.05.10.03	铰制孔螺栓	Blot	32
19	SPL6170	螺母	Nut	32
20	CZ106.09.10.01	液压刹车盘	Hydraulic brake disc	2
21	CZ106.05.10.04	螺栓	Blot	32
22	CZ106.04.14.00	联接盘	Connection plate	2
23	CZ106.04.10.08	键	key	2



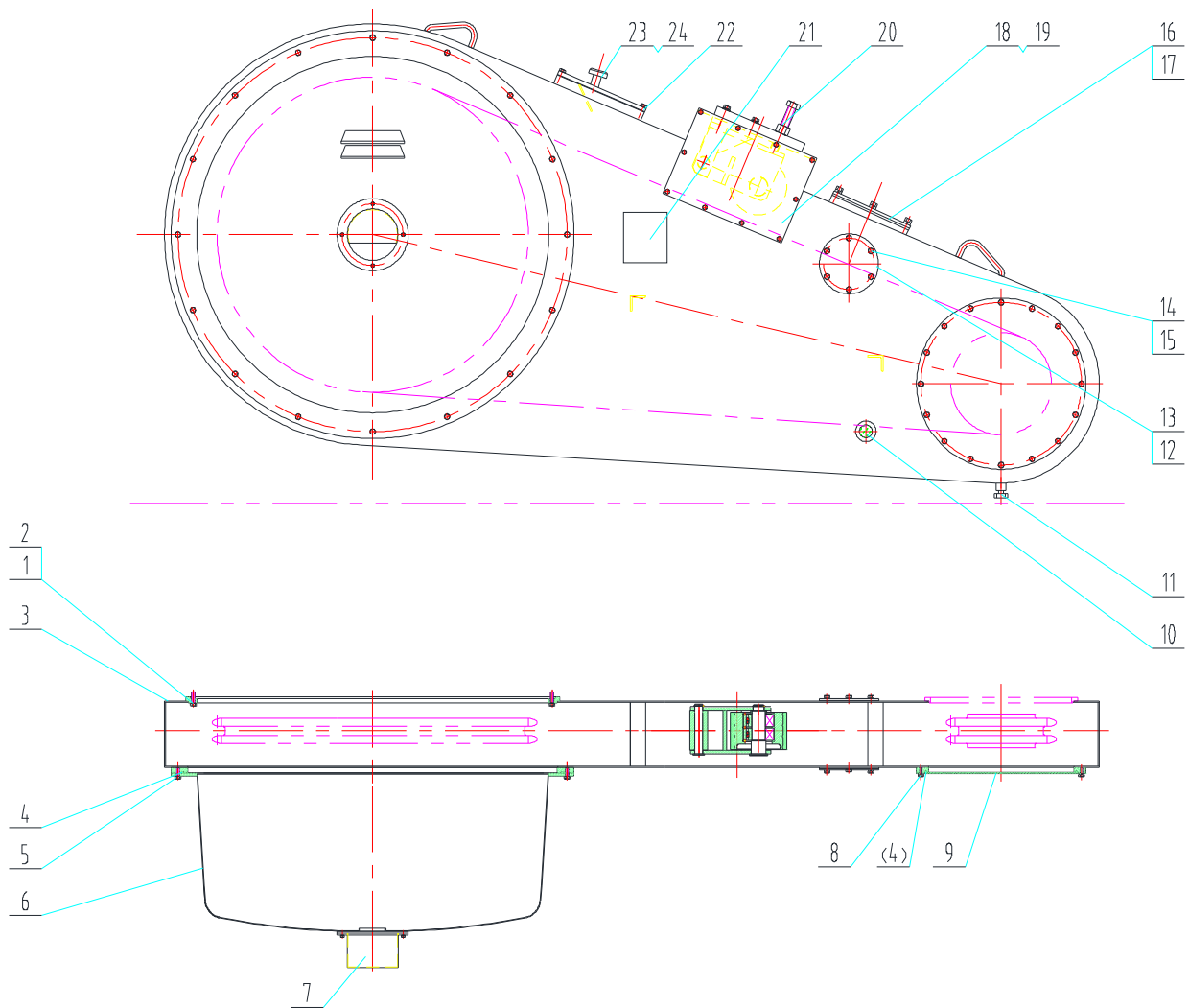
24	CZ106.05.11.00	滚筒体	Drum	1
25	CZ106.05.10.05	轴	Shaft	1
26	CZ106.05.10.06	轴套	Shaft sleeve	1
27	HG4-692-67	油封	Oil seal	3
28	CZ106.04.10.12	右轴承盒	Right bearing box	1
29	CZ106.04.10.13	垫片	Washer	1
30	GB/T5781-2000	螺栓	Blot	4
31	GB/T93-1987	垫圈	Washer	4
32	CZ106.04.10.14	护罩联结盘	Shield connecting plate	1
33	GB3452.1-82	O型密封条	'O' seal strip	1
34	GB/T5783-2000	螺栓	Blot	16
35	CZ106.04.10.17	链轮	Chain wheel	1
36	CZ106.04.10.20	联结套	Connection sleeve	1
37	CZ106.04.22.00	挡油板	Baffle plate	1
38	CZ106.04.10.18	密封垫	Gasket	1
39	GB/T5781-2000	螺栓	Blot	16
40	GB/T93-1987	垫圈	Washer	16
41	CZ106.04.10.24	护罩	Cover	1
42	GB/T5783-2000	螺栓	Blot	16
43	GB/T93-1987	垫圈	Washer	16
44	GB/T6170-2000	螺母	Nut	16
45	ATD330H	离合器	Clutch	1
46	CZ106.04.10.19	丝堵	Screw plug	2
47	CZ106.04.23.00	右轮辐	Right spoke	1
48	CZ106.04.10.30	轴套	Shaft sleeve	1



49	GB/T276-1994	轴承 6228	Bearing	2
50	CZ106.04.10.21	轴套	Shaft sleeve	1
51	CZ106.04.10.23	轴套	Shaft sleeve	1
52	CZ106.04.10.22	键	Key	2
53	CZ106.04.10.31	轴套	Shaft sleeve	1
54	CZ106.04.10.16	轴套	Shaft sleeve	1
55	CZ106.04.10.15	轴承端盖	Bearing cover	2
56	GB/T5782-2000	螺栓	Blot	9
57	GB/T5782-2000	螺栓	Blot	10
58	GB/T6170-2000	螺母	Nut	10
59	GB/T93-1987	垫圈	Washer	10
60	GB/T6170-2000	螺母	Nut	33
61	GB/T93-1987	弹垫	Washer	33



## 2. 链条护罩总成 Chain shield

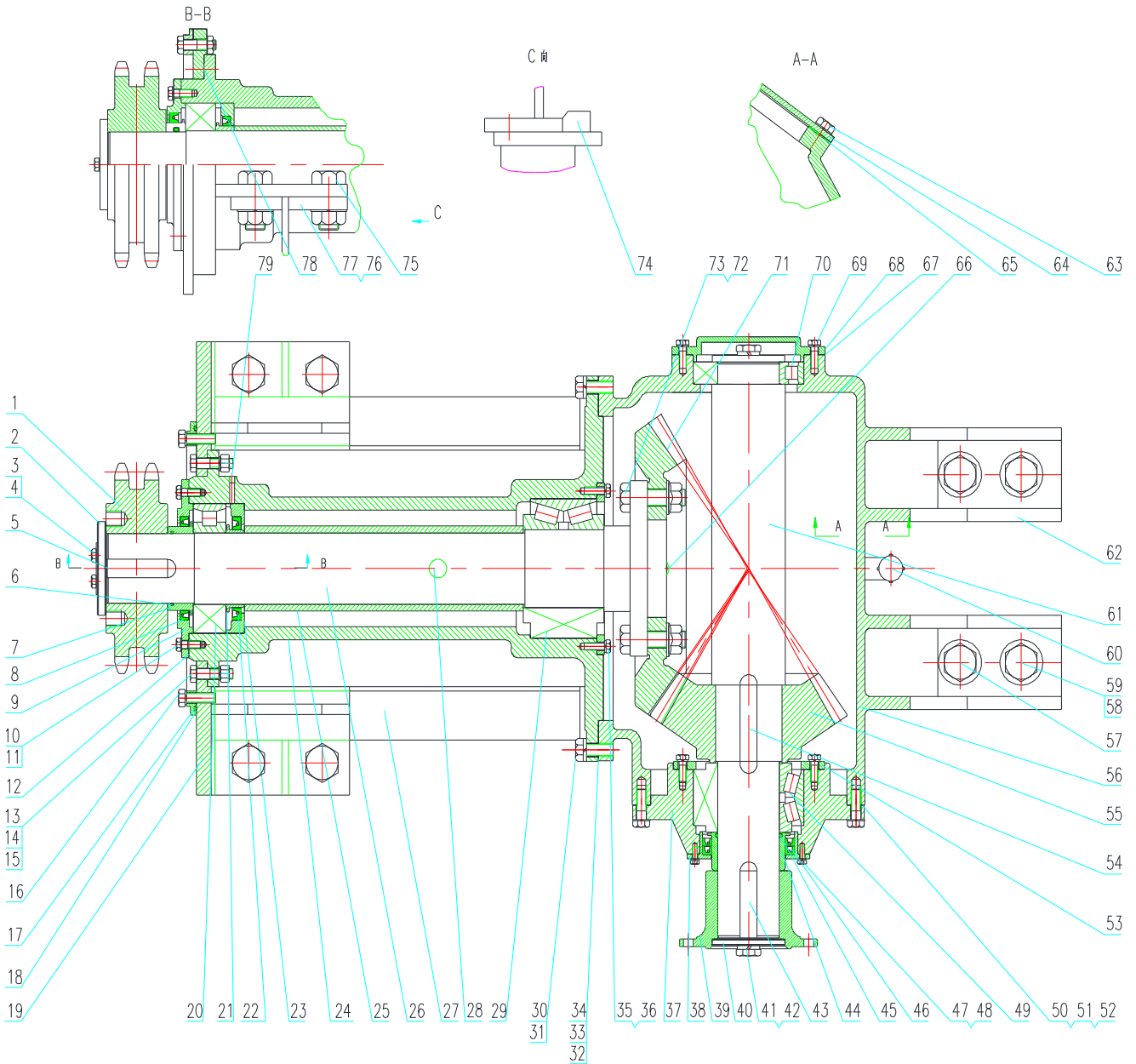


序号 No.	代号 Part No.	名称	Description	数量 Qty
1	GB/T5782-2000	螺栓	Blot	16
2	GB/T93-1987	垫圈	Washer	82
3	CZ106.09.121.00	护罩体	Shield	1
4	GB3452.1-82	O型密封条	'O' seal strip	1
5	GB/T5781-2000	螺栓	Bolt	40
6	CZ106.09.123.00	离合器护罩	Clutch shield	1
7	CZ106.09.122.00	导气水龙头护罩	Gas faucet shield	1
8	GB/T5782-2000	螺栓	Blot	26



9	CZ106.09.120.01	大盖板	Cover	1
10	GB1160.2-89	圆型油标 A32	Round oil level indicator	1
11	CZ106.09.120.02	六角螺塞	Hexagonal plug	1
12	CZ106.09.120.03	垫片	Washer	2
13	CZ106.09.120.04	盖板	Cover	2
14	GB/T5781-2000	螺栓	Blot	12
15	GB/T93-1987	垫圈	Gasket	12
16	CZ106.09.120.05	前盖板	Front cover	1
17	CZ106.09.120.06	前窗密封垫	Gasket	2
18	CZ106.09.120.07	盖板	Cover	1
19	CZ106.09.120.08	密封垫	Gasket	1
20	CZ106.09.124.00	张紧轮	Tension wheel	1
21	CZ106.09.120.09	链条标牌	Chain nameplate	1
22	CZ106.09.120.10	天窗顶盖	Hatch top cover	1
23	1014C-010	曲轴通风罩	Crank shaft ventilation cover	1
24	CZ106.09.120.11	通风罩连接套	Ventilation cover connection sleeve	1

### 3. 角传动箱 Angle drive box



序号 No.	代号 Part No.	名称	Description	数量 Qty
1	CZ106.09.130.01	链轮	Chain wheel	1
2	CZ106.09.130.02	压板	Pressure plate	1
3	GB/T5781-2000	螺栓	Blot	2
4	CZ106.09.130.03	止动垫片	Washer	1
5	CZ106.09.130.04	键	Key	1
6	GB3452.1-82	O型密封圈	'O' seal ring	1



7	CZ106.09.130.05	隔套	Spacer sleeve	1
8	HG4-692-67	油封	Oil seal	1
9	CZ106.09.130.06	端盖	End cover	1
10	GB/T5781-2000	螺栓	Bolt	16
11	GB/T93-1987	垫圈	Washer	32
12	CZ106.09.130.07	垫圈	Washer	1
13	GB/T5782-2000	螺栓	Bolt	12
14	GB/T93-1987	垫圈	Washer	36
15	GB/T6170-2000	螺母	Nut	12
16	GB/T5783-2000	螺栓	Bolt	24
17	GB3452.1-82	O 型密封条	'O' seal strip	1
18	CZ106.09.130.08	连接盘	Connection disc	1
19	CZ106.09.131.00	支架	Support	1
20	GB/T283-94	轴承	Bearing	1
21	CZ106.09.130.09	隔套	Spacer sleeve	1
22	HG4-692-67	油封	Oil seal	1
23	CZ106.09.130.10	油封座	Oil seal seat	1
24	CZ106.09.130.11	输出轴轴承座	Output shaft bearing seat	1
25	CZ106.09.130.12	挡管	catch lever	1
26	CZ106.09.130.13	输出轴	Output shaft	1
27	CZ106.09.132.00	支架 I	Support I	1
28	CZ106.09.133.00	透气塞	Ventilator	1
29	GB/T299-1995	轴承	Bearing	1
30	GB/T5783-2000	螺栓	Bolt	16
31	GB/T93-1987	垫圈	Washer	16



32	CZ106.09.130.14	调整垫片	Adjusting washer	6
33	CZ106.09.130.15	调整垫片	Adjusting washer	2
34	CZ106.09.130.16	调整垫片	Adjusting washer	1
35	CZ106.09.130.17	挡圈	Check ring	1
36	GB/T5782-2000	螺栓	Bolt	8
37	CZ106.09.130.18	轴承座	Bearing seat	1
38	CZ106.09.130.19	油封座	Bearing seat	1
39	CZ106.09.130.20	法兰盘	Flange plate	1
40	CZ106.09.130.21	压板	Clamp	2
41	CZ106.09.130.22	螺栓	Bolt	2
42	GB/T93-1987	垫圈	Washer	2
43	CZ106.09.130.23	键	key	2
44	CZ106.09.130.24	隔套	Spacer sleeve	1
45	GB3452.1-82	O型密封圈	'O' seal ring	1
46	HG4-692-67	油封	Oil seal	2
47	GB/T5781-2000	螺栓	Blot	8
48	GB/T93-1987	垫圈	Washer	18
49	GB/T299-1995	轴承	Bearing	1
50	CZ106.09.130.25	调整垫片	Adjusting washer	6
51	CZ106.09.130.26	调整垫片	Adjusting washer	2
52	CZ106.09.130.27	调整垫片	Adjusting washer	1
53	CZ106.09.130.28	挡圈	Check ring	1
54	CZ106.09.130.29	键	key	1
55	CZ106.09.130.30	小齿轮	Pinion	1
56	CZ106.09.130.31	箱体	Box	1



57	CZ106.09.130.32	螺栓	Blot	6
58	GB/T93-1987	垫圈	Washer	8
59	CZ106.09.130.33	螺母	Nut	8
60	CZ106.09.134.00	加油口及油位尺	Oil filler and oil level rule	1
61	CZ106.09.130.34	输入轴	Input shaft	1
62	CZ106.09.136.00	支架 I	Support I	1
63	GB/T5781-2000	螺栓	Blot	10
64	CZ106.09.130.35	盖板	Cover plate	1
65	CZ106.09.130.36	垫片	Washer	1
66	CZ106.09.130.37	螺塞	Screw bolt	1
67	CZ106.09.130.38	垫片	Washer	1
68	CZ106.09.130.39	端盖	End cover	1
69	GB/T5781-2000	螺栓	Blot	8
70	GB/T283-94	轴承	Bearing	1
71	CZ106.09.130.40	大齿轮	Big gear	1
72	CZ106.09.130.41	螺栓	Blot	12
73	SPL6170	螺母	Nut	12
74	CZ106.09.130.42	限位块	Positioning block	2
75	CZ106.09.130.43	铰制空用螺栓	Bolt	2
76	CZ106.09.130.44	垫板 I	Spacer I	1
77	CZ106.09.130.45	垫板 II	Spacer II	1
78	CZ106.09.130.46	密封垫	Gasket	1
79	JB/T7940.1-1995	油杯	Oil cup	1