


# **Q254-250 PNEUMATIC SPINNING WRENCH**

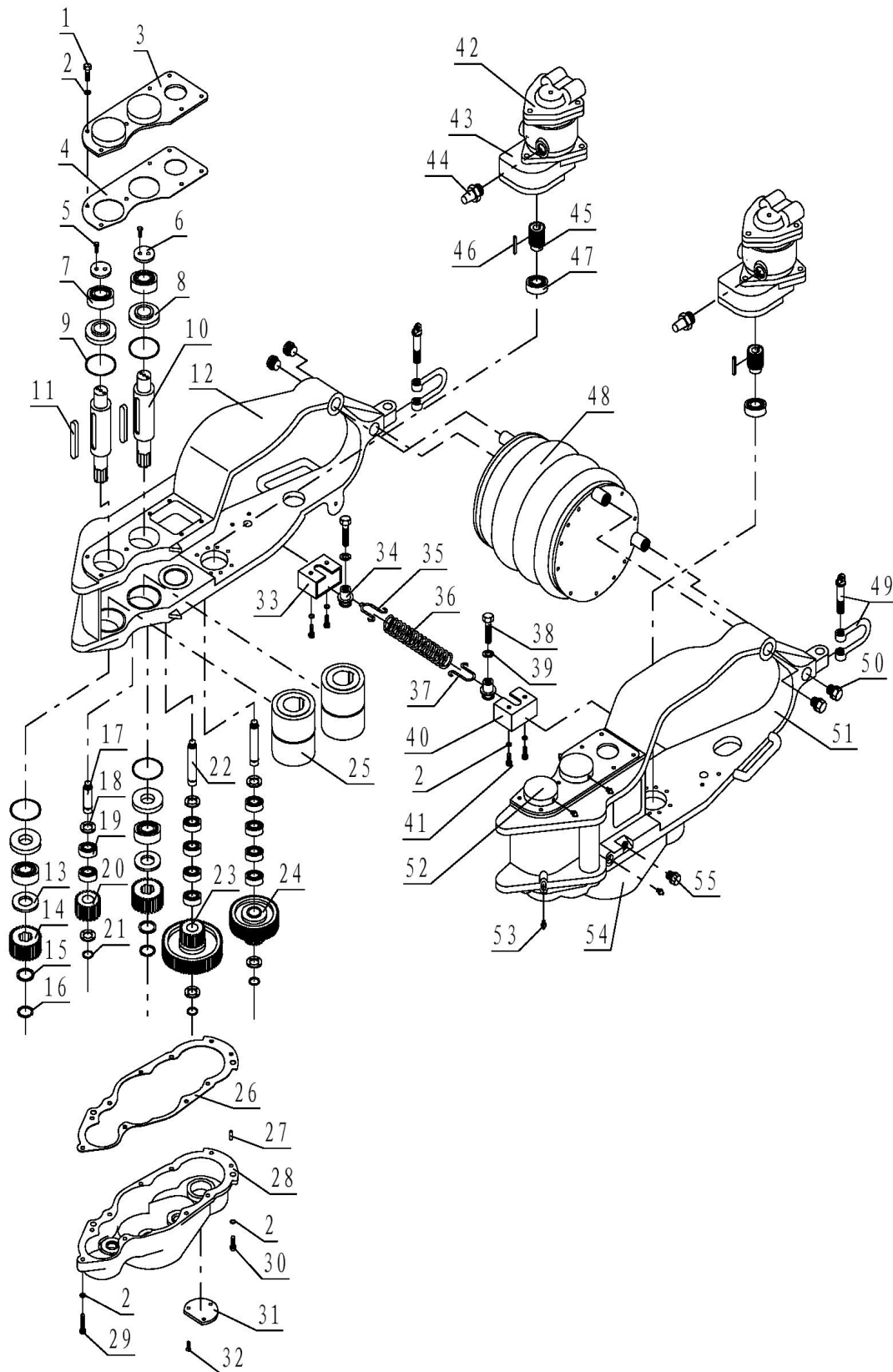
## **AXONOMETRIC DRAWING**

Q254-250-SM

A large, light gray watermark of the word "TOPLAND" is oriented diagonally across the center of the page, from the bottom left towards the top right.

## CONTENTS

1. Drive Assembly (06.00).....	3, 4
2. Adjusting Rod Assembly (06.01.00).....	5, 6
3. Air Tyre Assembly (06.04.00A).....	7
4. Speed Reducer for Air Motor (06.05.00A).....	8, 9
5. Air Control System (06.06.00B).....	10, 11
6. Suspension cylinder (06.11.00) .....	12



## Fig1.Drive Assembly(06.00)

### 1. 06.00 Drive Assembly

No.	Part No.	Description	Qty.	No.	Part No.	Description	Qty.
1	GB/T5781-2000	Bolt M10*30	14	29	GB/T70.1-2000	Screw M10*45	8
2	GB/T93-1987	Washer 10	36	30	GB/T70.1-2000	Screw M10*30	12
3	06-06A	Upper cover (left)	1	31	06-08	Gland	2
4	06-10	Paper gasket II	2	32	GB/T68-2000	Screw M8*16	6
5	GB/T5781-2000	Bolt M8*20	8	33	06.03.02.00A	Right shield	1
6	JB/ZQ4348-1997	Guard plate φ60*6	4	34	06.03-03A	Supporting sleeve	2
7	GB/T276-1994	Bearing 6308-Z	8	35	06.03.01.00	Left spring hook	1
8	06.02-12	Seal ring	8	36	06.03-01	Spring	1
9	JB/ZQ4224-1997	O ring 90*3.5	8	37	06.03-02	Right spring hook	1
10	06.02-09	Roller shaft	4	38	GB/T5782-2000	Bolt M18*60	2
11	GB/T1096-2003	Key A18*11*110	4	39	GB/T93-1987	Washer 18	2
12	06-02A	Left housing	1	40	06.03.01.00A	Left shield	1
13	06.02-11	Spacer	4	41	GB/T70.1-2000	Screw M10*25	4
14	06.02-10	Roller gear	4	42	FMs-8.00	FMs-8 air motor	2
15	06.02-06	Gasket ring	4	43	06.05.00A	Speed reducer for air motor	2
16	GB/T894.1-1986	Stop ring 40	4	44	FXSa-L25 (G1)	Muffler	4
17	06.02-07	Idler shaft	2	45	06.02-01	Gear	2
18	06.02-04A	Gasket	12	46	GB/T1096-2003	Key B6*6*50	2
19	GB/T5801-1994	Bearing NK25/20	20	47	GB/T276-1994	Bearing 6007	2
20	06.02-08	Idler	2	48	06.04.00A	Air tyre assembly	1
21	GB/T894.1-1986	Stop ring 25	6	49	JB8112-1999	Shackle S-DW4	2
22	06.02-02	Small shaft	4	50	06-13	Lock screw M27*2	4
23	06.02.02.00A	Dual gear	2	51	06-01A	Right housing	1
24	06.02.01.00A	Dual gear	2	52	06-05A	Upper cover (right)	1
25	06.02-13	Drive roller	4	53	JB/T7940.1-1995	Grease cupM10*1	8



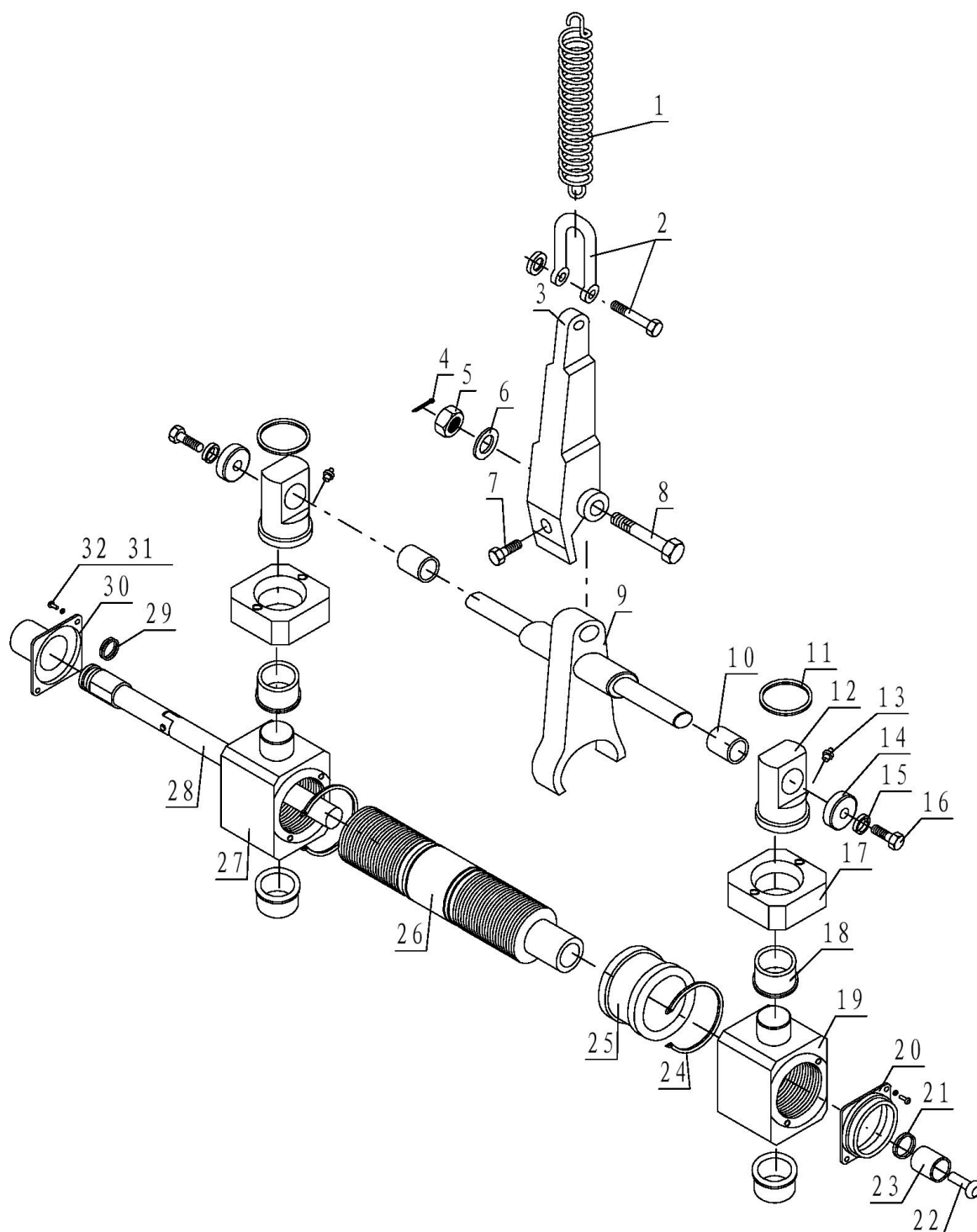
TOPLAND OILFIELD SUPPLIES LTD.

Office 8-1011, Lane 5600, Chuansha Road, Pudong, Shanghai, China.

Tel: (86)-21-50499568 Fax: (86)-21-61925822

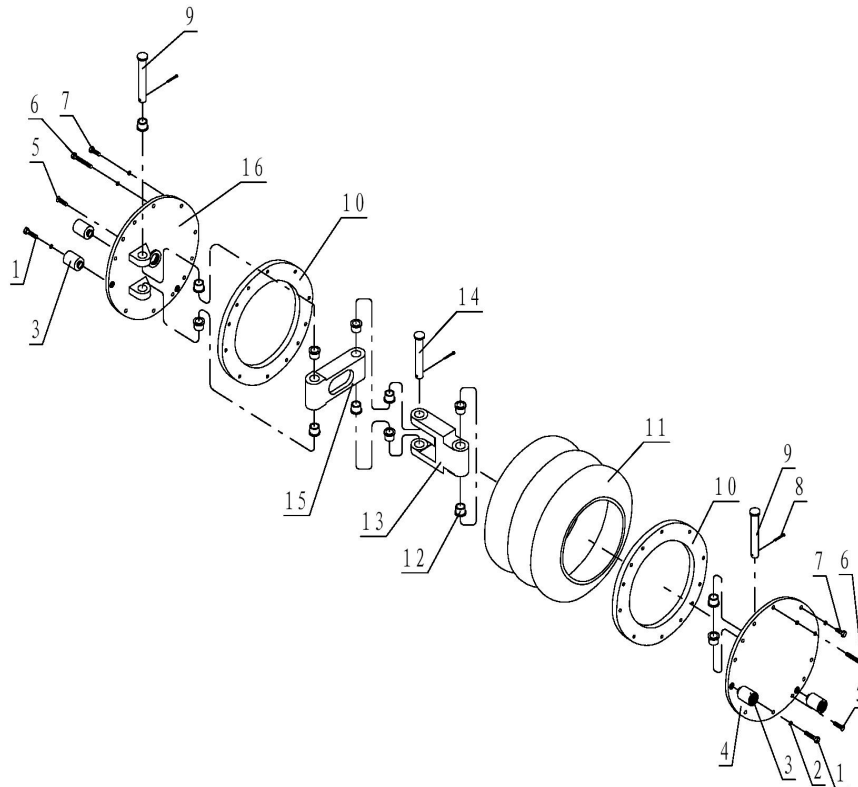
5

26	06-09	Paper gasket I	2	54	06-03A	Lower box body (right)	1
27	01.01-01	Locating pin	4	55	JB/ZQ4450-1997	Plug M24*2	2
28	06-04A	Lower box body (left)	1				



**Fig2. Adjusting Rod Assembly(06.01.00)**
**2、06.01.00 Adjusting Rod Assembly**

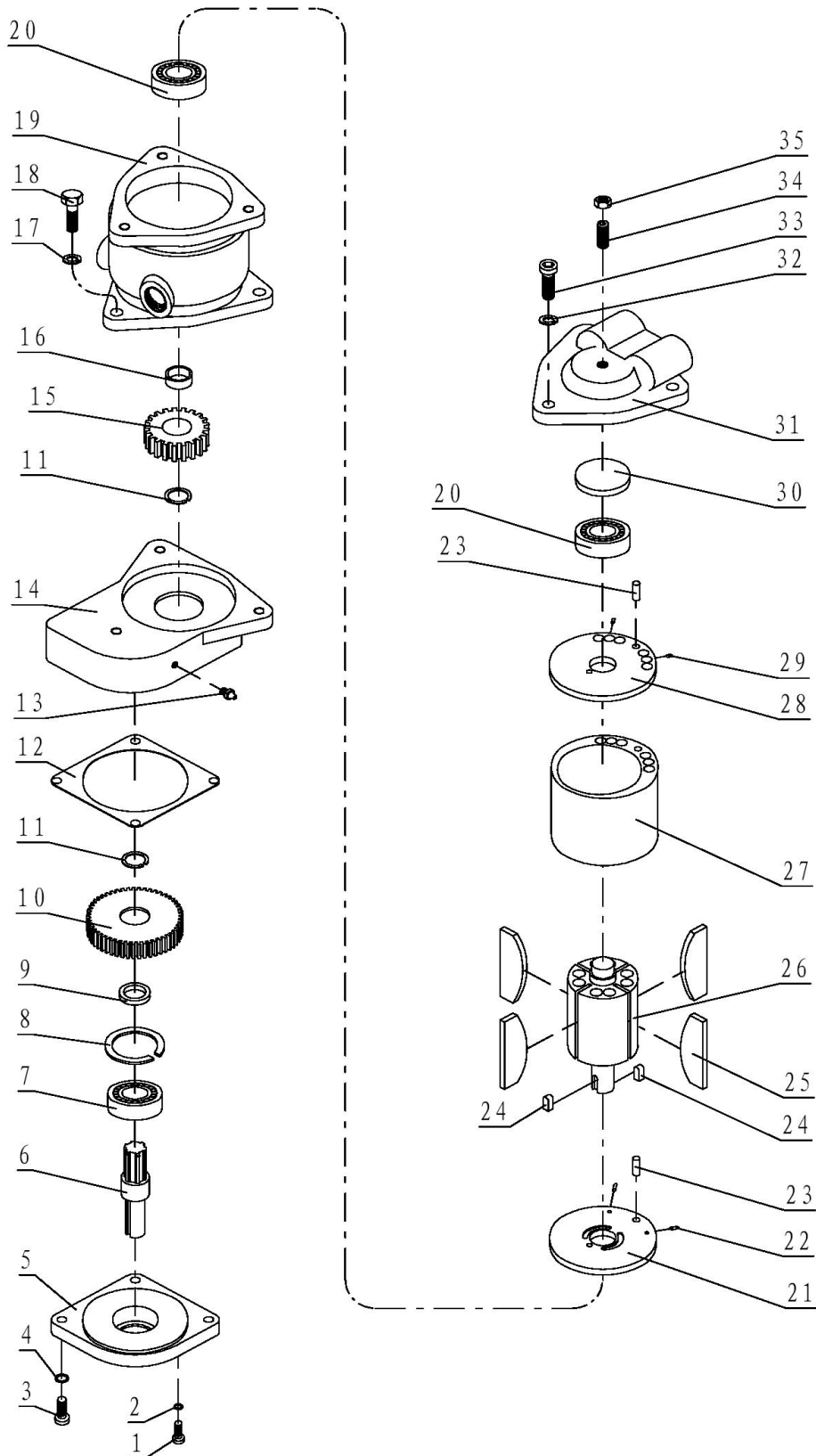
No.	Part No.	Description	Qty.	No.	Part No.	Description	Qty.
1	02.08.00	Suspension spring assy.	1	17	06.01-10	Supporting sleeve	2
2	JB8112-1999	Shackle S-DW1.6	1	18	06.01-02	Bushing	4
3	06.01-08	Hanging frame	1	19	06.01-07	Rivet sliding block (right)	1
4	GB/T91-2000	Pin 4*40	1	20	06.01-13	Dust cover	1
5	GB/T6180-2000	Nut M20	1	21	02.02-21	Seal ring	1
6	GB/T95-2002	Washer 20	1	22	GB/T77-2000	Lock screw M6*10	1
7	GB/T5781-2000	Bolt M16*30	1	23	06.01-12	Ball handle	1
8	GB/T31.1-1988	Bolt M20*115	1	24	GB/T894.1-1986	Stop ring 85	2
9	06.01.03.00	Shaft for supporting frame	1	25	06.01-03	Shaft sleeve	1
10	06.01-06	Bushing for sliding block	2	26	06.01.02.00	Adjusting screw	1
11	06.01-11	Thrust Washer	2	27	06.01-01	Rivet sliding block (left)	1
12	06.01-05	Sliding block	2	28	06.01.04.00	Adjusting turn rod	1
13	JB/T7940.1-1995	Grease cup M10*1	2	29	JB4224-97	O-ring38*3.5	2
14	06.01-09	Guard plate	2	30	06.01.01.00	Housing	1
15	GB/T93-1987	Washer 16	2	31	GB/T70.1-2000	Screw M6*16	4
16	GB/T5781-2000	Bolt M16*35	2	32	GB/T93-1987	Washer 6	4



### 3. 06.04.00A Air Tyre Assembly

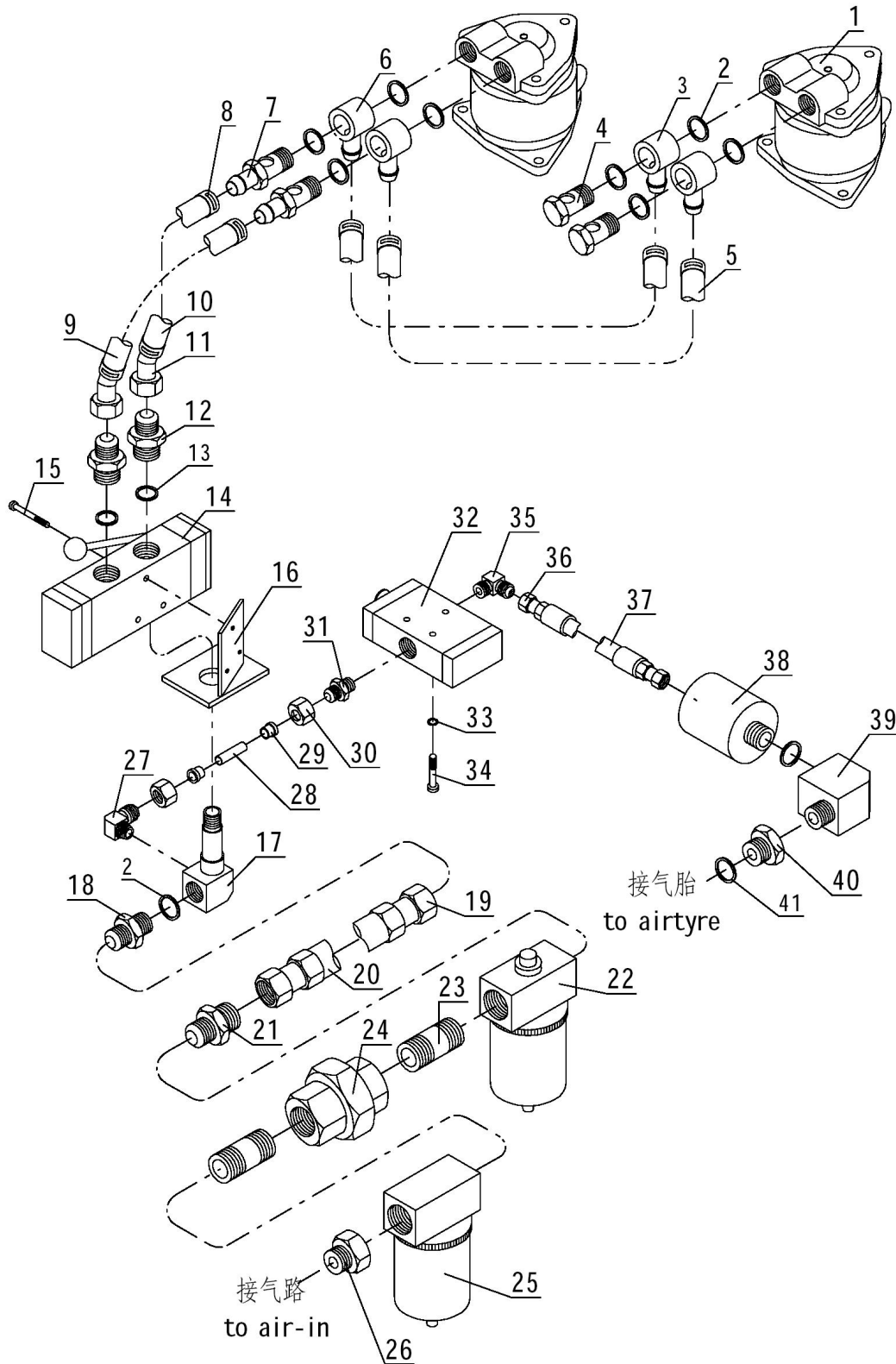
No.	Part No.	Description	Qty.	No.	Part No.	Description	Qty.
1	GB/T5782-2000	Bolt M8*35	2	9	06.04-07A	Pin shaft II	2
2	GB/T93-1987	Washer 8	24	10	06.04-02A	Plate	2
3	06.04-01A	Connection sleeve	4	11	ORIA	Spring	1
4	06.04.01.00A	Right end cover	1	12	06.04-05A	Bushing	12
5	GB/T68-2000	Screw M8*25	2	13	06.04-04A	U con rod	1
6	GB/T5782-2000	Bolt M8*60	2	14	06.04-03A	Pin shaft I	1
7	GB/T5781-2000	Bolt M8*25	18	15	06.04-06A	Central con rod	1
8	GB/T91-2000	Cotter pin 5*30	3	16	06.04.02.00A	Left end cover	1





**Fig4. Speed Reducer for Air Motor(06.05.00A)**
**4. 06.05.00A Speed Reducer for Air Motor**

No.	Part No.	Description	Qty.	No.	Part No.	Description	Qty.
1	GB/T70.1-2000	Screw M8*20	8	19	FMS-8-04	Housing	1
2	GB/T93-87	Washer 8	8	20	GB/T276-1994	Bearing 6305/P6	2
3	GB/T65-2000	Screw M10*25	3	21	FMS-8-06	Lower air cap	1
4	GB/T93-87	Washer 10	3	22	FMS-8-10	Plug I	2
5	06.05-01	Lower cover	1	23	GB/T119.1-2000	Pin 8*22	2
6	06.05-05	Small shaft	1	24	GB/T1096-2003	Key C8*7*18	2
7	GB/T281-1994	Bearing 1205	1	25	FMS-8-07	Vane	4
8	GB/T893.1-1986	Stop ring 52	1	26	FMS-8-08	Rotator	1
9	06.05-03	Spacer	1	27	FMS-8-05	Stator	1
10	06.05-06	Big gear	1	28	FMS-8-03	Upper air cover	1
11	GB/T894.1-1986	Stop ring 25	2	29	FMS-8-12	Plug II	2
12	06.05-02	Paper gasket	1	30	FMS-8-01	Bearing gasket	1
13	JB/T7940.1-1995	Grease cup M10*1	1	31	FMS-8-02	Air cover	1
14	06.05-04A/08A	Upper cover left /right 各 1	各 1	32	GB/T95-2002	Washer 12	3
15	06.05-07	Pinion	1	33	GB/T70.1-2000	Screw M12*35	3
16	06.05-09A	Shaft sleeve	1	34	GB/T77-2000	Screw M12*30	1
17	GB/T93-87	Washer 12	3	35	GB/T6170-2000	Nut M12	1
18	GB/T5781-2000	Bolt M12*35	3				



**Fig5. Air Control System(06.06.00B)**
**5. 06.06.00B Air Control System**

No.	Part No.	Description	Qty.	No.	Part No.	Description	Qty.
1	FMs-8	Air motor	2	22	QIU-40	Lubricator G11/2	1
2	JB982-77	Washer 33	9	23	GB3289.26-82	Internal joint G11/2	2
3	06.06.03.00B	Hinged joint II	2	24	GB3289.37-82	Union G11/2	1
4	06.06-02B	Hinged bolt	2	25	QSL-40	Filter G11/2	1
5	HG4-548	Oil-proof clothed hose φ25*φ36*1000	2	26	06.06-04A	Joint	1
6	06.06.01.00B	Hinged joint I	2	27	02.05-07	Angle coupling	1
7	06.06-01B	Through-way hinged bolt	2	28	06.06-09	Copper tubing φ14*1*50	1
8	JB/ZQ4440-1986	Pipe clamp (φ32-φ44)	8	29	02.05-16	Press sleeve	2
9	HG4-548	Oil-proof clothed hose φ25*φ36*250	1	30	01.08.10-01M	Nut M22*1.5	2
10	HG4-548	Oil-proof clothed hose φ25*φ36*160	1	31	02.05-14	Pipe connection	1
11	06.06.02.00B	Joint	2	32	23R5-L15	Two-way three-way valve	1
12	06.06-03	Adaptor	2	33	GB/T93-1987	Washer 8	3
13	JB982-77	Washer 27	4	34	GB/T70.1-2000	Screw M8*50	3
14	Q34R6-L20	Three-position four-way reverse valve	3	35	A01.5000-003	Angle coupling	1
15	GB/T70.1-2000	Screw M6*65	1	36	A01.5200.000	Air line joint	2
16	06.06.05.00A	Connection plate	1	37	HG4-761	Reel hose φ10*φ18*1200	1
17	06.06-08B	Big angle joint	1	38	QF514D	Quick release valve	1
18	35-30	Ball joint	2	39	06.06-12	Angle coupling	1
19	02.05.04.00	Hose joint	1	40	06.06-06B	Hex internal joint	1
20	HG4-548	Oil-proof clothed hose φ32*φ45.5*10000	1	41	JB982-77	Washer 30	2
21	02.05-17	Joint					

## 6. 06.11.00 Suspension Cylinder

No.	Part No.	Description	Qty.	No.	Part No.	Description	Qty.
1	06.11-02A	Retainer	1	9		Hose 10l*450-C	1
2	PCV15	Check valve	1	10	06.11.01.00A	Guard cover	1
3	14.09.01-02A	Angle joint	5	11	HV-02	Reversing valve	1
4	37.000-05	Drain joint	1	12	JB/ZQ4446	Plug R1/4	1
5		Hose10l*550-C	1	13	GB/T70.1	Screw M6*40	4
6		Hose10l*1m-C	2	14	GB/T95	Washer 6	4
7	QGBZ125-500-MP 1	Air cylinder	1	15	06.06-08D	Angle joint	1
8	03120602	Tee joint	1	16	FXS-L8	Muffler (G1/4)	1

