



YZCF-170 Hydraulic Power Station

Parts Catalogue

Topland Oilfield Supplies Ltd.

Add: Office 1306, No.145 Pujian Road, Pudong, Shanghai, China

Tel.: 0086-21-50890868

Fax: 0086-21-61925822

Website: <http://www.toplandoil.com>

E-mail: alice.fu@toplandoil.com

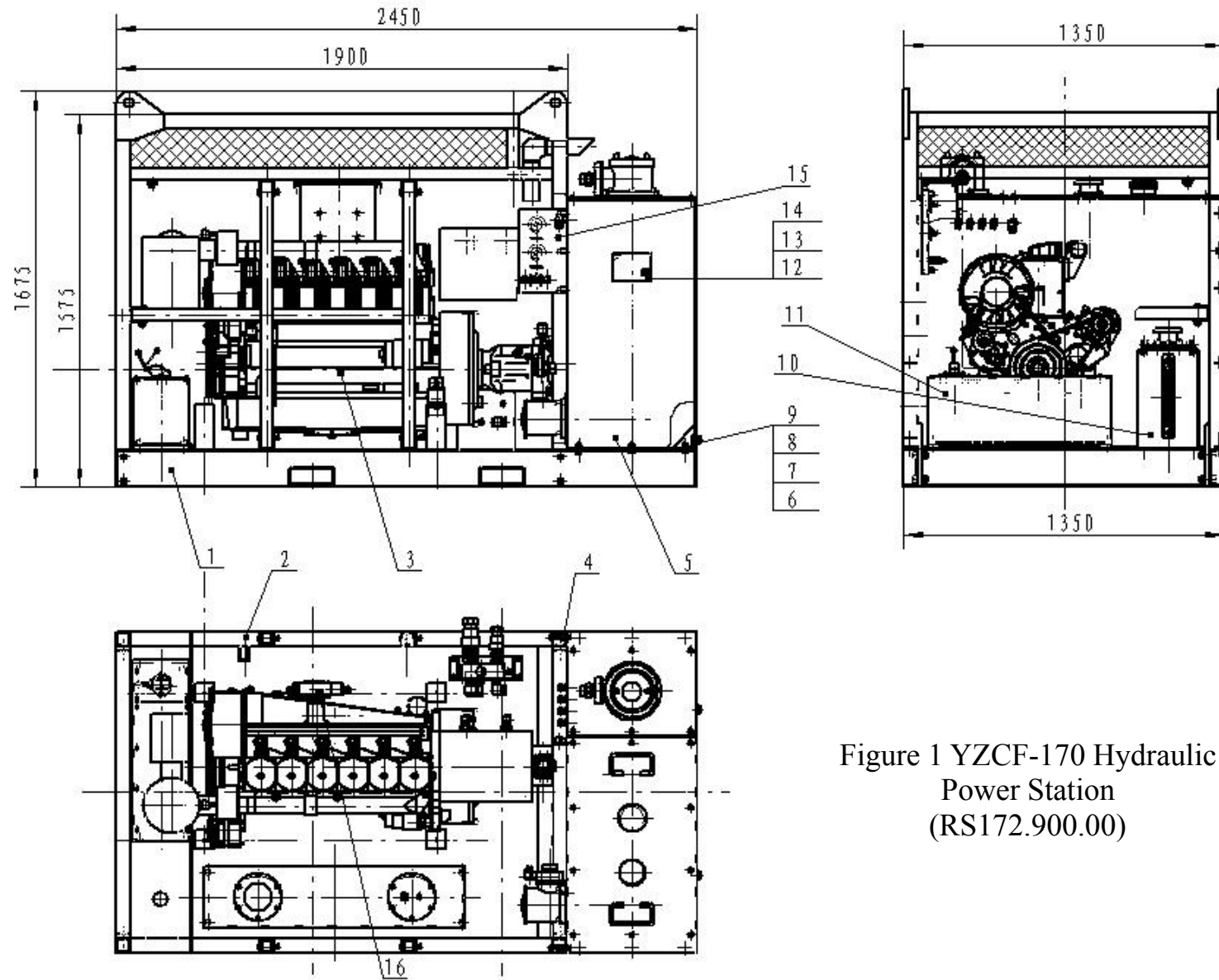


Figure 1 YZCF-170 Hydraulic
Power Station
(RS172.900.00)

1. YZCF-170 Hydraulic Power Station (RS172.900.00)

No.	Code	Name	Qty.
1	RS172.910.00	Frame assembly	1
2	04.300-04	Screw plug NPT1	2
3	RS172.920.00	Diesel engine pump group	1
4	GB/T5783-2000	Bolt M12×85	8
5	RS172.930.00	Oil tank assembly	1
6	GB/T5783-2000	Bolt M12×35	6
7	GB/T93-87	Washer 12	14
8	GB/T95-2002	Washer 12	28
9	GB/T6170-2000	Bolt M12	14
10	RS172.940.00	Diesel tank assembly	1
11	RS172.950.00	Battery components	1
12	BP/YZCF-170-01	Nameplate (Chinese & English)	1
13	GB/T827-86	Rivet 3×5	4
14	RS162.300-01	Nameplate soldering block	1
15	RS172.960.00	Panel – instrument – hydraulic circuit assembly	1
16	RS172.970.00	Speed regulator components	1

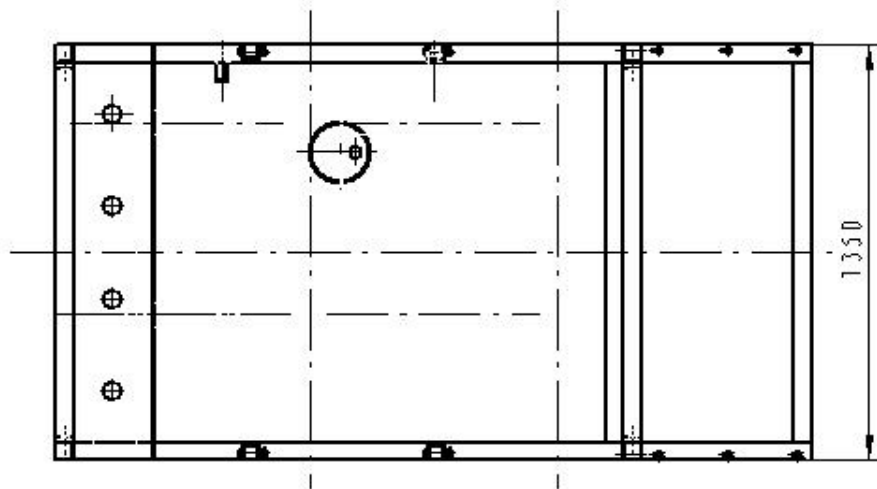
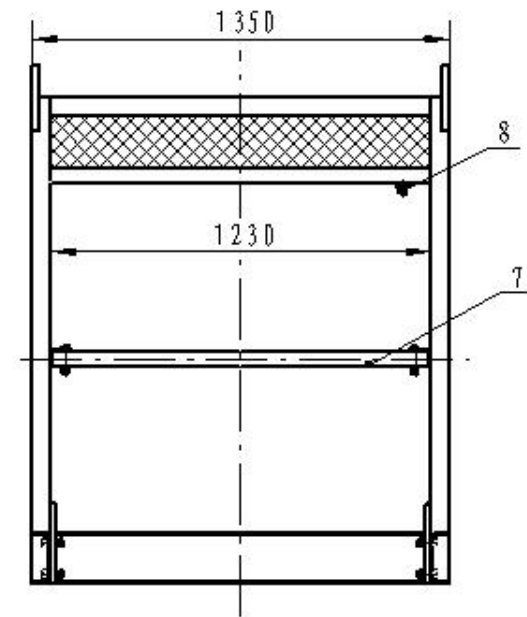
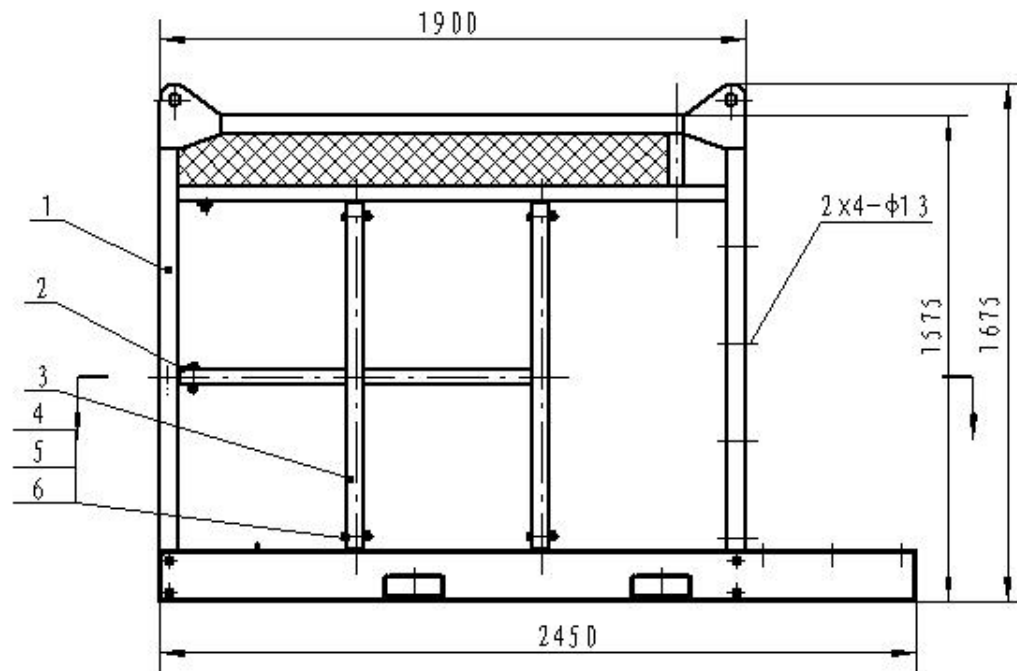


Figure 2 Frame components
(RS172.910.00)

2. Frame components (RS172.910.00)

No.	Code	Name	Qty.
1	RS172.911.00	Frame	1
2	RS172.910-01	Groove	12
3	RS172.912.00	Guardrail	2
4	GB/T5783-2000	Bolt M14×80	12
5	GB/T93-87	Washer 14	12
6	GB/T6170-2000	Nut M14	12
7	RS172.910-02	Square tube 50×4×1220	1
8	JB/ZQ4449-97	Plug screw NPT3/4	1

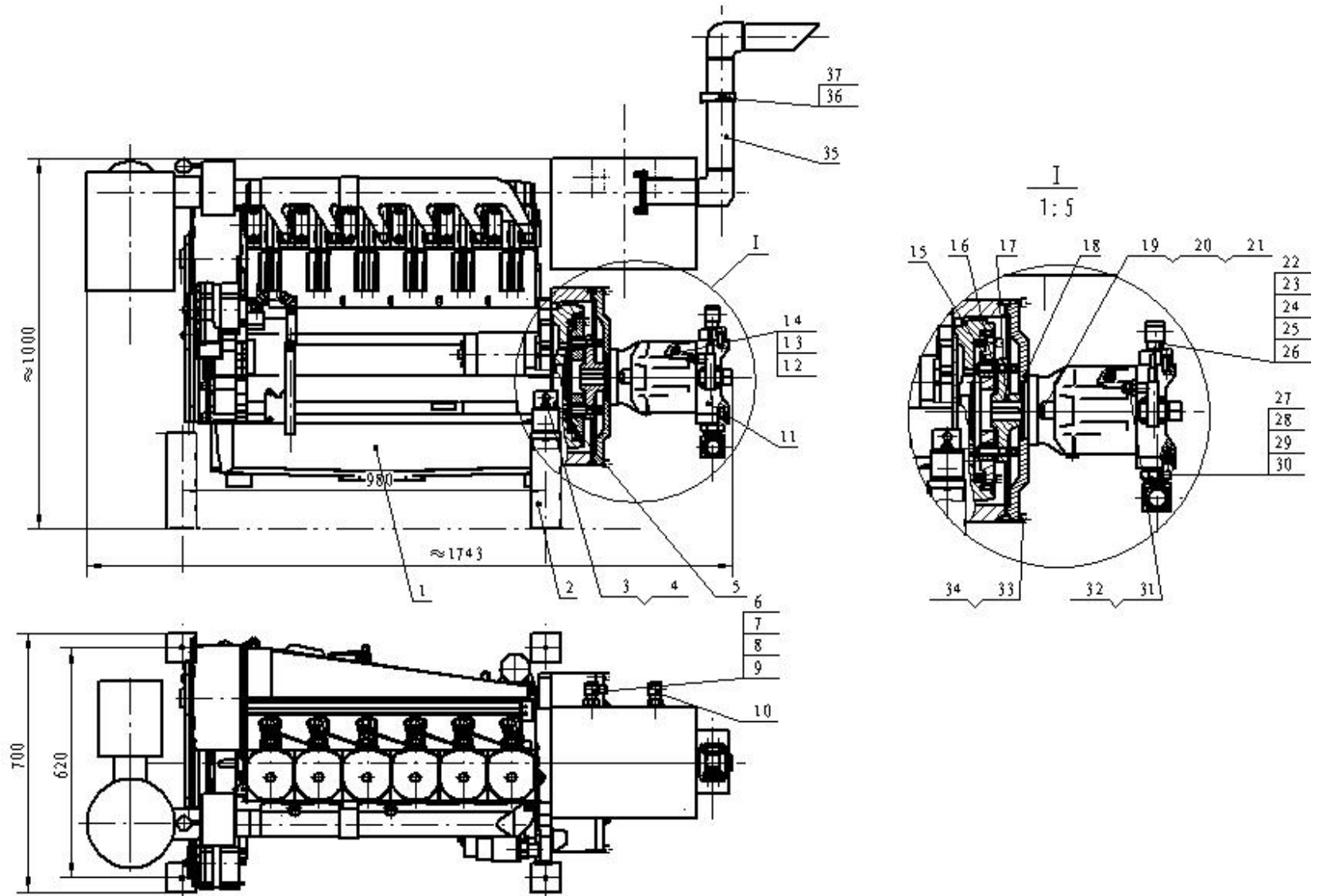


Figure 3 Diesel engine pump group (RS172.920.00)

3. Diesel engine pump group (RS172.920.00)

No.	Code	Name	Qty.
1	F6L912	Diesel engine (air cooling + hydraulic pump)	1
2	RS172.921.00	Outrigger	4
3	GB/T95-2002	Washer 12	8
4	GB/T5783-2000	Bolt M12×85	4
5		Shock pad	4
6	JZM42-N12C	Straight connector M42×2-NPT3/4 (inner)	2
7	JB982-77	Combination ring 42	2
8	JLC22-N12-N04C	Right connector M22×1.5C-NPT3/4-NPT1/4 (inner)	1
9	24.400-03	Right-angle connector M14×1.5-NPT1/4	1
10	42.340-01G	Right-angle connector M30×1.5C-NPT3/4	1
11	OS-A10VS0100DFLR/31R-PPA12N00	Plunger pump	1
12	04.330-03E	Straight connector M27×2-NPT1/2	1
13	JB982-77	Straight joint M25×1.5-M30×1.5C	1
14	J1.06.A4-02	Straight connector M18×1.5-NPT1/2	1
15	RS162.320-01	Semi-coupler I	1
16		B5 elastic pin for coupler	8
17	RS172.920-01	Semi-coupler II	1
18	RS172.920-02	Pump support	1
19	GB/T5783-2000	Bolt M16×45	2
20	GB/T93-87	Washer 16	2
21	GB/T95-2002	Flat washer 16	2
22	04.330-01B	Oil ingress flange	1
23	JB/ZQ4224-97	O-ring 50×3.1	1
24	04.340-06	Right-angle joint NPT1-M36×2A	1
25	GB/T70.1-2000	Screw M14 x 30	4
26	GB/T93-87	Washer 14	4
27	172.120-01	Oil-absorbing flange	1
28	JB/ZQ4224-97	O-ring 75×3.1	1
29	JXA48-60	Adjustable joint M48×2-M60×2A	1
30	GB/T70.1-2000	Screw M12 x 25	4
31	76.200-20A	Straight joint M18×1.5C-M14×1.5	1
32	JB982-77	Combination ring 14	1
33	GB/T70.1-2000	Screw M10 x 40	20
34	GB/T93-87	Washer 10	20
35	RS162.323.00	Exhaust pipe	1
36	RS162.320-04	Fixed welding block	1
37	RS162.320-05	Bonded washer 27	1

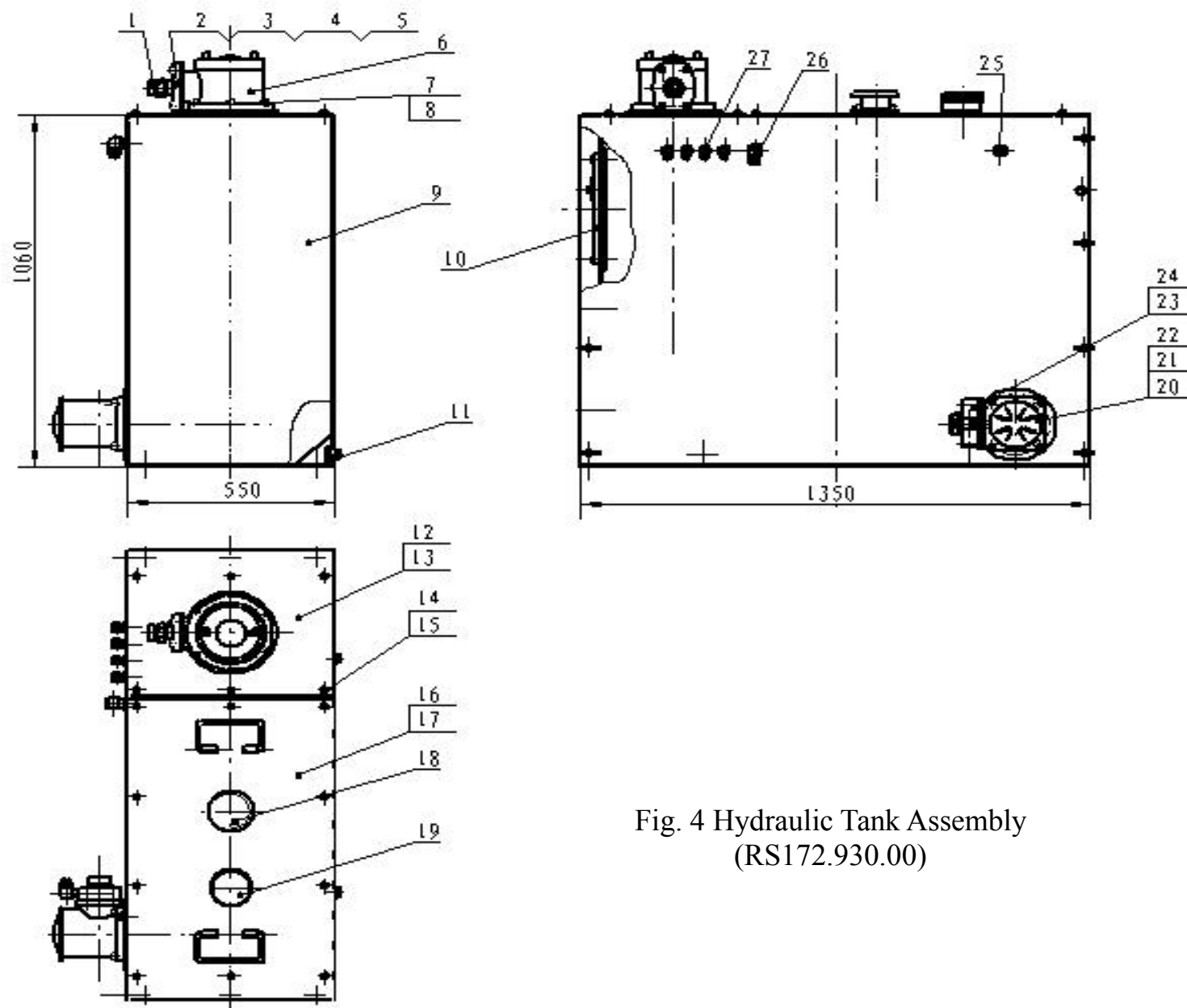


Fig. 4 Hydraulic Tank Assembly
(RS172.930.00)

4. Hydraulic Tank Assembly (RS172.930.00)

No.	Code	Name	Qty.
1	04.340-04B	Straight joint M45×2A-NPT1 1/4	1
2	RS172.930-01	Oil return flange	1
3	GB/T70.1-2000	Screw M12 x 25	4
4	GB/T93-87	Washer 12	4
5	JB/ZQ4224-97	O-ring 95×3.1	1
6	RFB-630×20Y	Oil return filter	1
7	GB/T70.1-2000	Screw M8×25	6
8	GB/T93-87	Washer 8	6
9	RS172.931.00	Oil tank body	1
10	YWZ-300T	Level gauge	2
11	04.300-04	Screw plug NPT1	2
12	RS172.932.00	Right cover plate of oil tank	1
13	RS172.930-02	Gasket of right cover plate	1
14	GB/T5781-2000	Bolt M10×20	16
15	GB/T93-87	Washer 10	20
16	RS172.933.00	Left cover plate of oil tank	1
17	RS172.930-03	Gasket of left cover plate	1
18	EF5-65	Air filter	1
19	04.07-14MA	Cover	1
20	TF-630×80F-Y	Oil suction filter	1
21	GB/T70.1-2000	Screw M10×25	8
22	GB/T93-87	Washer 10	8
23	RS172.934.00	Oil-absorbing filter flange	1
24	JB/ZQ4224-97	O-ring 105×3.1	1
25	JB/ZQ4449-97	Plug screw NPT3/4	1
26	42.340-01G	Right-angle connector M30×1.5C-NPT3/4	2
27	40-04B	Right-angle connector M18×1.5C-NPT3/8	4

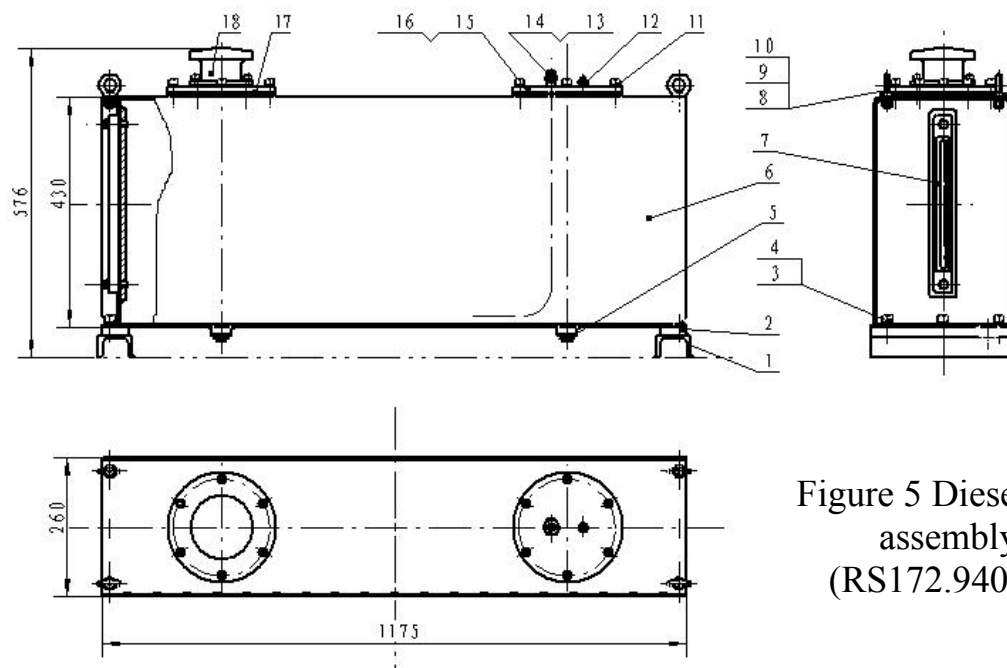


Figure 5 Diesel tank assembly
(RS172.940.00)

5. Diesel tank assembly (RS172.940.00)

No.	Code	Name	Qty.
1	RS172.940-01	Steel channel 63×40×260	2
2	RS172.940-02	Soldering block	2
3	GB/T70.1-2000	Bolt M12×25	6
4	GB/T93-87	Washer 12	6
5	JB/ZQ4449-97	Plug screw NPT3/4	2
6	RS172.941.00	Diesel oil tank body	1
7	YWZ-300C	Level gauge (diesel)	1
8	GB/T825-88	Lifting bolt M10	4
9	GB/T93-87	Washer 10	16
10	GB/T6170-2000	Nut M10	4
11	GB/T70.1-2000	Screw M10×30	12
12	JZD10-N04	Straight connector M10×1-NPT1/4	1
13	JZM10C-D16-N06	Connector M10×1 (inner) -M16×1.5D-NPT3/8	1
14	RS172.940-03	Copper tube 10×1×500	1
15	RS172.940-04	Flange cover I	1
16	RS172.940-05	Gasket	2
17	EF5-65	Air filter	1
18	RS172.940-06	Flange cover II	1

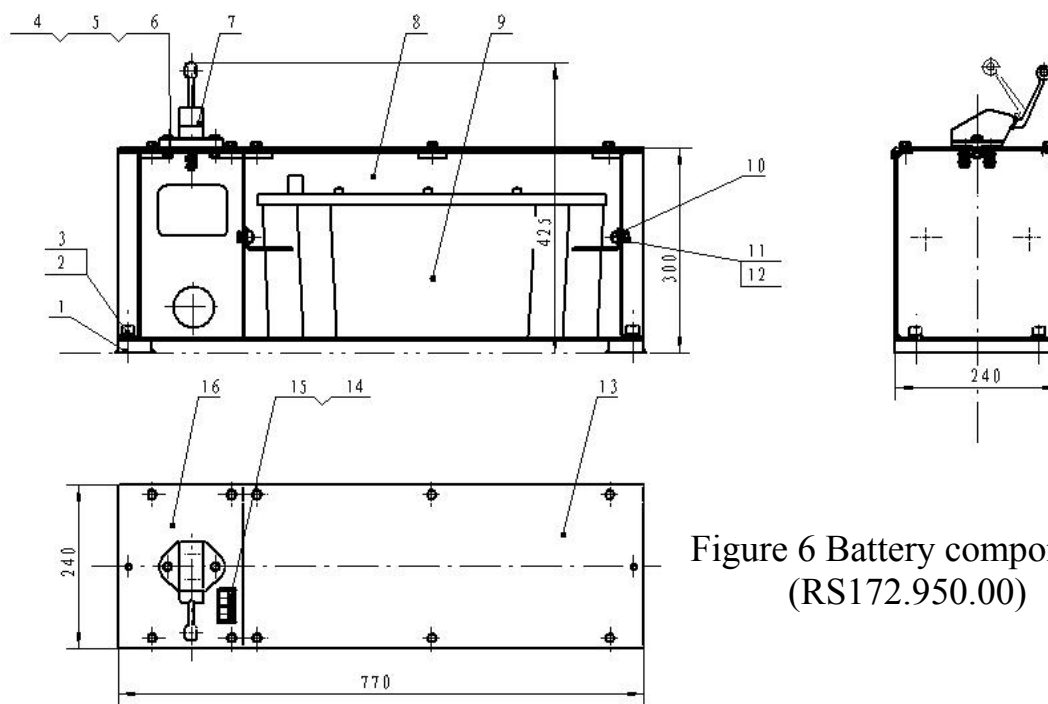


Figure 6 Battery components
(RS172.950.00)

6. Battery components (RS172.950.00)

No.	Code	Name	Qty.
1	RS172.950-01	Welding block	2
2	GB/T70.1-2000	Screw M12×20	4
3	GB/T93-87	Washer 12	4
4	GB/T5781-2000	Bolt M8×25	2
5	GB/T93-87	Washer 8	16
6	GB/T6170-2000	Nut M8	2
7	JK861	Battery switch	1
8	RS172.951.00	Battery box	1
9	N135	Battery (135Ah 12V)	1
10	RS172.952.00	Limiting fixed plate	1
11	GB/T5781-2000	Bolt M8×20	14
12	GB/T95-2002	Washer 8	4
13	RS172.950-02	Tank cover	1
14	BP/YZCF-630-42	Electric handle switch signpost	1
15	GB/T827-86	Rivet 2×3	4
16	RS172.950-03	Switch cover	1

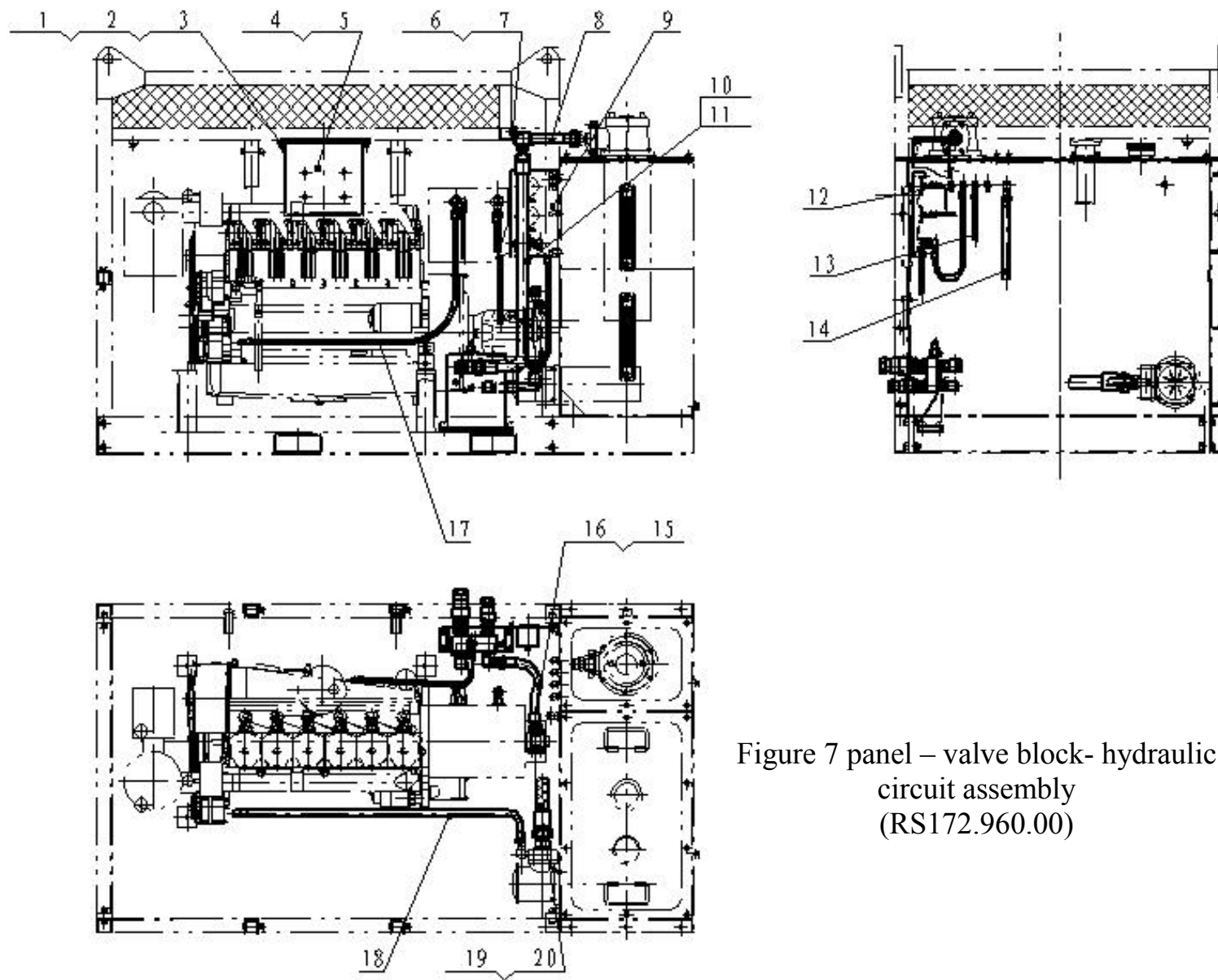


Figure 7 panel – valve block- hydraulic
circuit assembly
(RS172.960.00)

7. Panel – valve block- hydraulic circuit assembly (RS172.960.00)

No.	Code	Name	Qty.
1	GB/T70.1-2000	Screw M10×20	10
2	GB/T93-87	Washer 10	10
3	RS172.960-01	Instrument welding block	1
4	RS172.961.00	Instrument fixed frame	1
5		Diesel monitor	1
6	RS172.960-02	Fixed block	1
7	RS172.960-03	Fixed plate	1
8	RS172.962.00	Oil return steel pipe	1
9	RS172.963.00	Panel assembly	1
10	JB1885-77	Steel wire hose A32 I-1100 (M45×2A)	1
11	JB/ZQ4224-97	O ring 35×3.1	2
12	HFP1-P1-3-P-800	Piezometric pipeline	2
13	JB1887-77	Steel wire hose C10 I-800 (M18×1.5C)	5
14	JB1887-77	Steel wire hose C19 I-800 (M30×1.5C)	1
15	JB1885-77	Steel wire rubber hose A22III-750 (M36×2A)	1
16	JB/ZQ4224-97	O-ring 28×3.1	2
17		Steel wire rubber hose C13 I -1700 (one end M22×1.5C, the other end Φ16)	1
18		Steel wire rubber hose C22 I -1350 (one end M30×1.5C, the other end Φ22)	1
19		Armoured bellowA40-400	1
20	04.620-05	Rectangular ring 50×40×3.5	2
21	GB/T70.1-2000	Screw M10×20	10
22	GB/T93-87	Washer 10	10

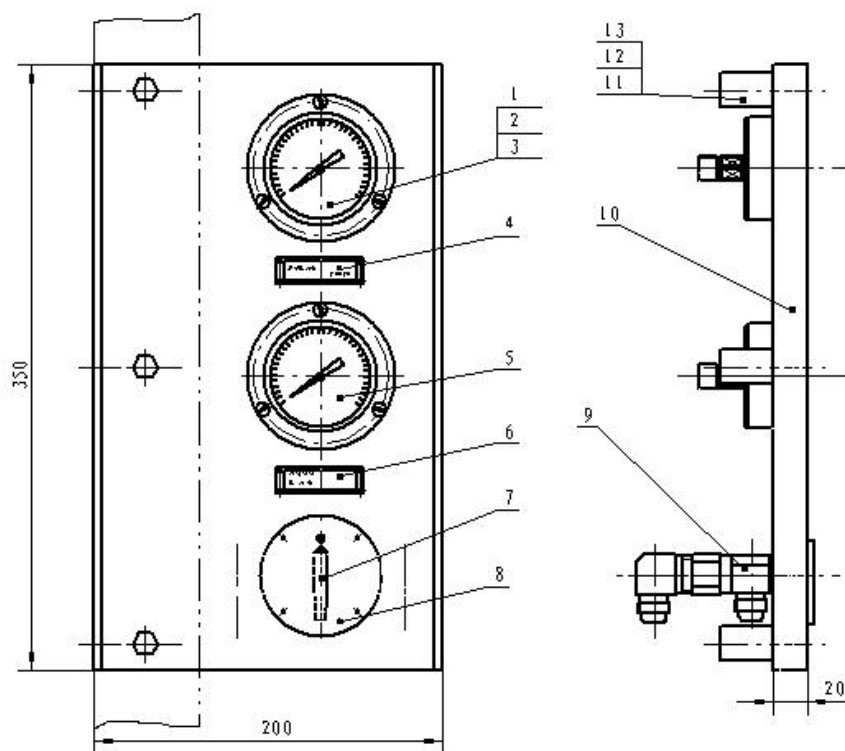


Figure 8 Panel components (RS172.963.00)

8. Panel components (RS172.963.00)

No.	Code	Name	Qty.
1	YN60-III	Pressure gauge (0-40MPa)	1
2	GB/T67-2000	Screw 4×8	6
3	GB/T93-87	Washer 4	6
4	BP/YZCF-170-41	Hydraulic pressure gauge nameplate	6
5	YN60-III	Pressure gauge (0-6MPa)	1
6	BP/YZCF-170-42	Cooling cycle pressure gauge nameplate	1
7	C-3BVT-S6-03FN-6P	Three-way ball valve (NPT3/8 inner thread 6000psi)	1
8	BP/YZC1F-265H-42	Switching nameplate	1
9	40-04B	Right-angle connector M18×1.5C-NPT3/8	3
10	RS172.963-01	Mounting plate	1
11	RS162.350-01	Welding block	3
12	GB/T5781-2000	Bolt M8×20	3
13	GB/T93-87	Washer 8	3

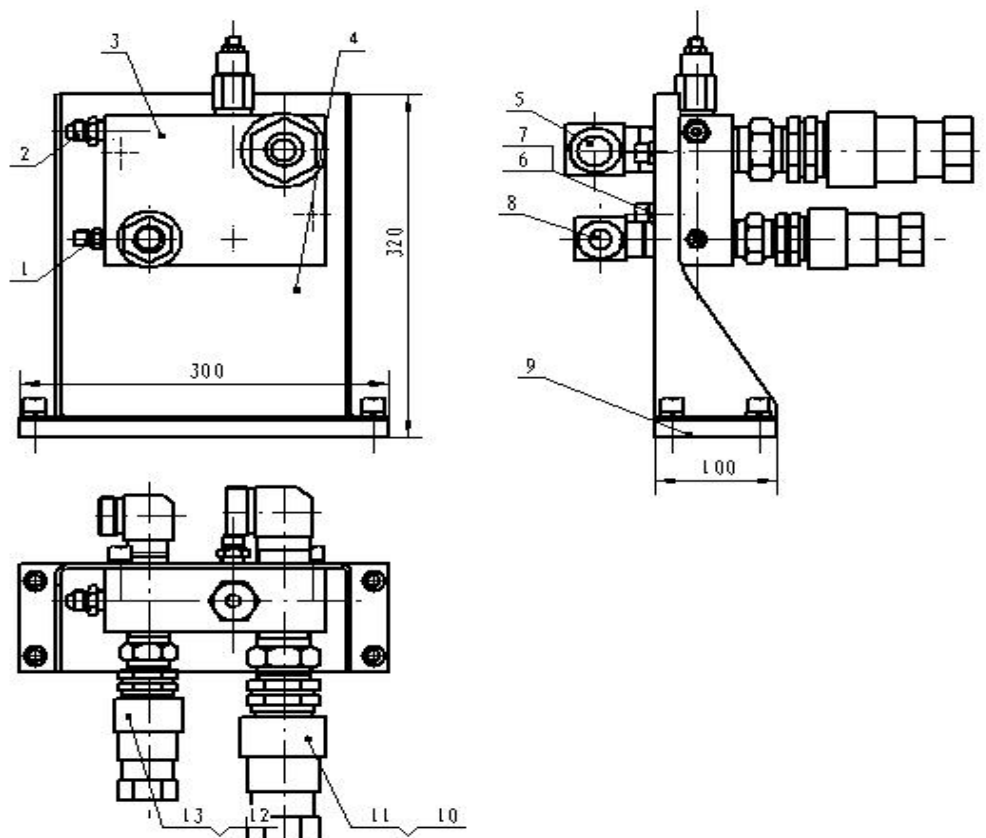


Figure 9 Output assembly (RS172.964.00)

9. Output assembly (RS172.964.00)

No.	Code	Name	Qty.
1	01.09-22	Straight connector M14×1.5-NPT1/4	1
2	J1.06.A4-04	Oil drainage connector M18×1.5-NPT3/8	2
3	SKSS-S-000426	Overflow valve block	1
4	RS172.964-01	Valve block installation support	1
5	04.340-05	Right-angle connector M45×2A-NPT1 1/4	1
6	GB/T70.1-2000	Screw M12×20	6
7	GB/T93-87	Washer 12	6
8	04.340-06	Straight connector M36×2-NPT1	1
9	RS172.964-02	Installation support welding plate	1
10	04.540-05	Straight connector NPT1 1/4-NPT1 1/4	1
11	PAN1 NPT1 1/4	Quick connector NPT1 1/4	1
12	04.340-01B	Straight joint NPT1-NPT1	1
13	PAV1 NPT1	Quick coupler NPT1	1

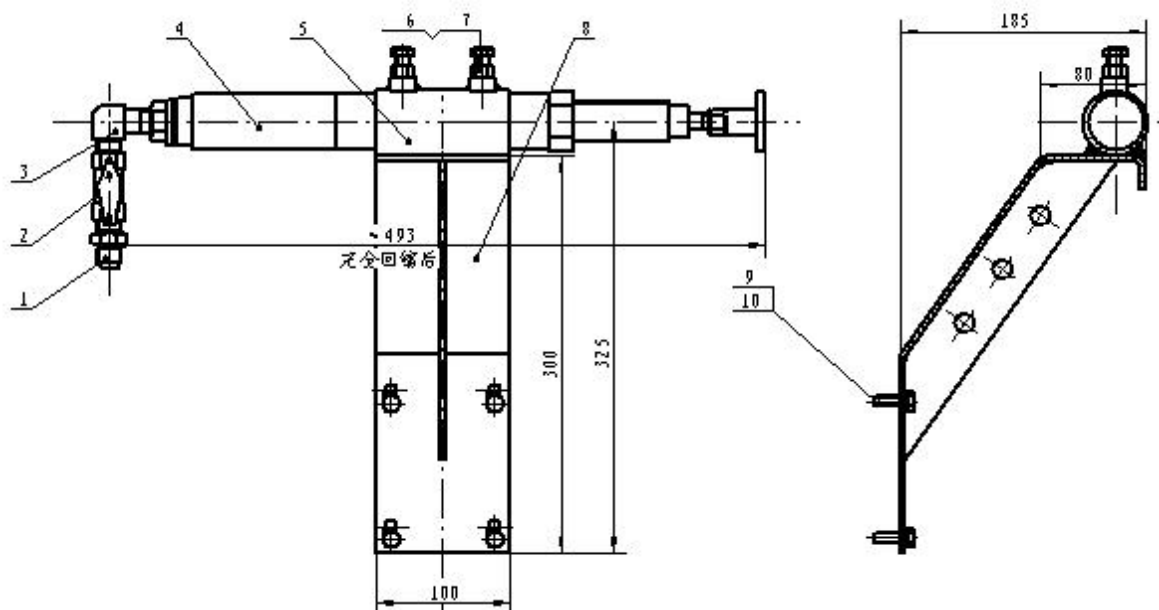


Figure 10 Speed regulator components (RS172.970.00)

10. Speed regulator components (RS172.970.00)

No.	Code	Name	Qty.
1	J1.06.A4-04	Right-angle connector M18×1.5C-NPT3/8	1
2	C-3BV-S6-03FN-6P	Two-way ball valve (inner thread NPT3/8)	1
3	55B.200-03	Straight connector NPT3/8-NPT3/8	1
4	RS172.971.00A	Speed governing hydraulic cylinder	1
5	RS172.972.00	Fixed drum	1
6	GB/T5781-2000	Bolt M10×30	2
7	GB/T6170-2000	Nut M10	2
8	RS172.973.00	Installation support	1
9	GB/T5781-2000	Bolt M8×20	4
10	GB/T93-87	Washer 8	4

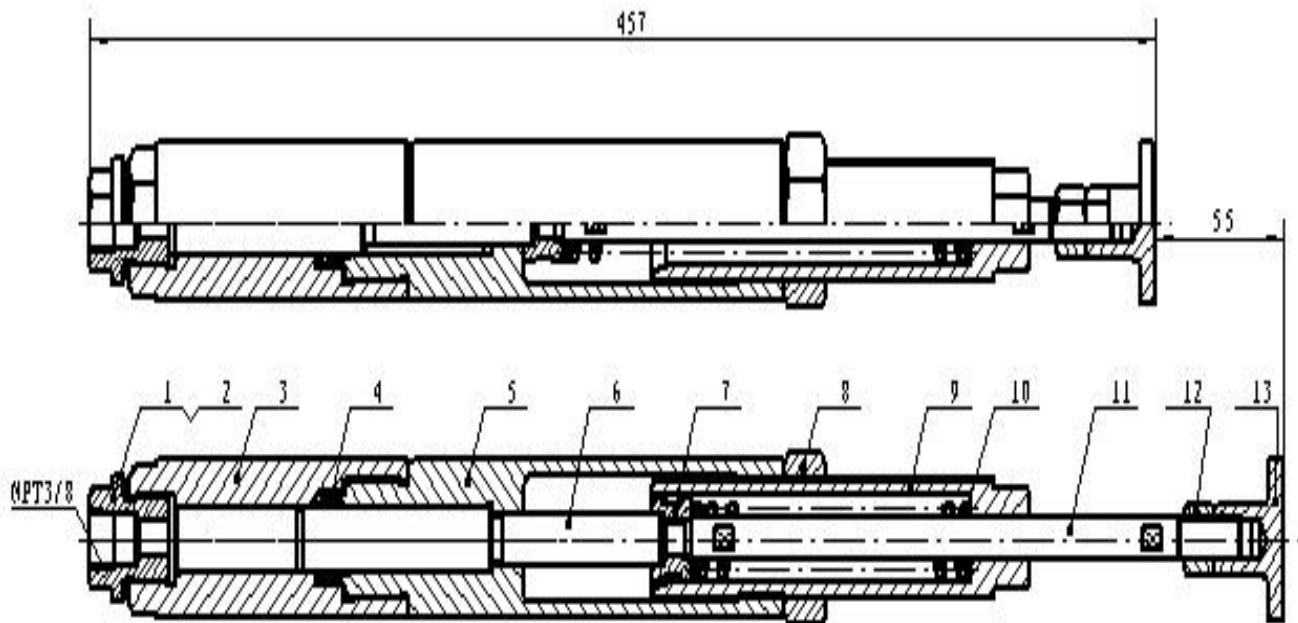


Figure 11 Speed control cylinder (RS172.971.00A)

11. Speed control cylinder (RS172.971.00A)

No.	Code	Name	Qty.
1	RS171.971-01	Oil intake plug screw M24×1.5	1
2	JB982-77	Washer 24	1
3	RS172.971-02A	Liner	1
4	H605-Φ18×Φ26×5/5.7	Pull rod seal 4611000	2
5	RS172.971-03A	Long cylinder cover	1
6	RS172.971-04A	Plunger	1
7	RS172.971-05	Push rod nut	1
8	RS172.971-06	Tighting nut M33×1.5	1
9	RS172.971-07	Adjustable spring drum	1
10	RS172.971-08A	Reset spring	1
11	RS172.971-09A	Pull rod	1
12	GB/T6170-2000	Bolt M12	1
13	RS172.971-10	Throttle regulating disc	1