

---

---

# **SINGLE ACTING TRIPLEX PUMP**

7" STROKE

MODEL

RMKP-550

Parts List

---

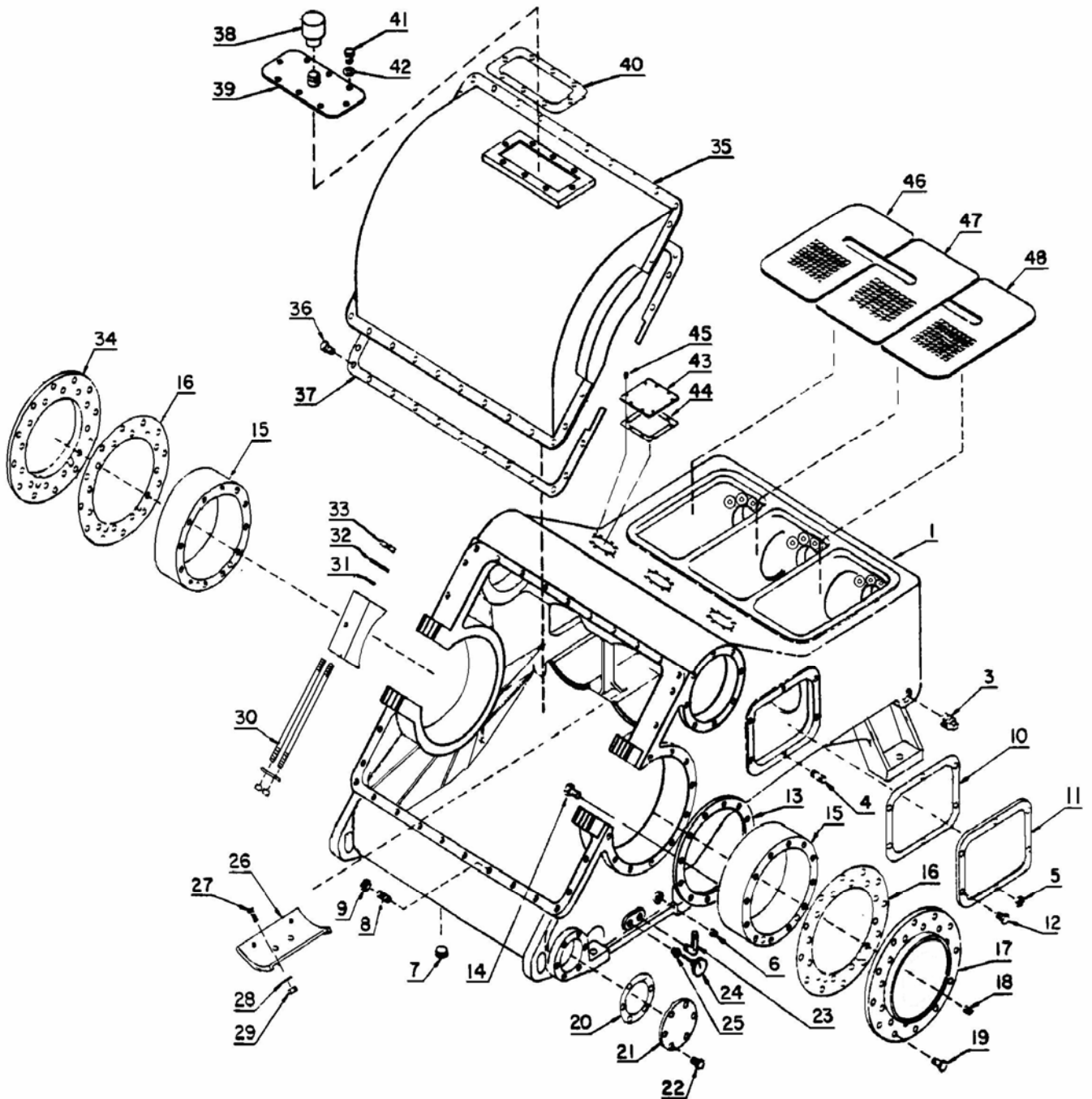
---

---

## RMKP-550 PUMP



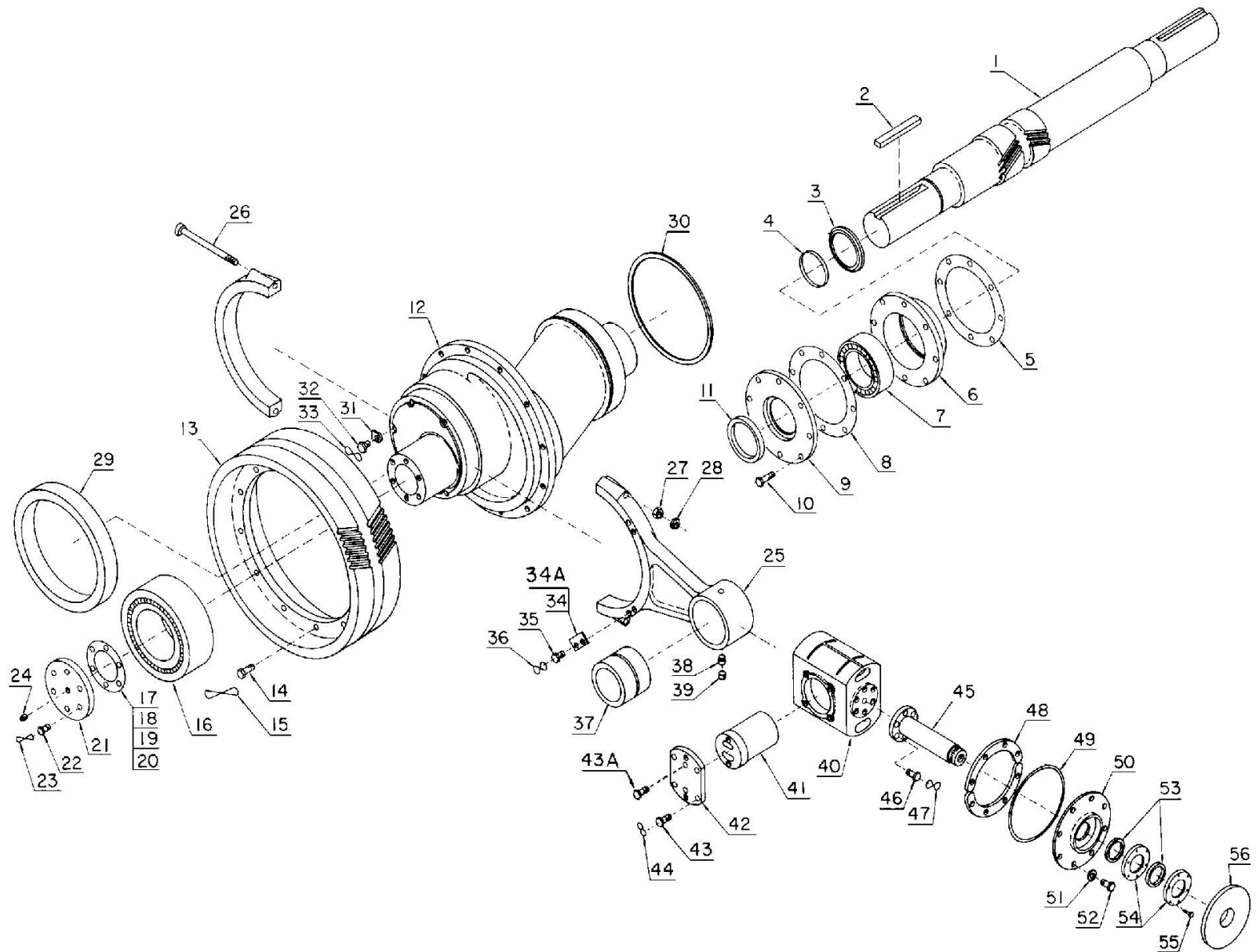
## FRAME ASSEMBLY



No.	Description	QtyPer Pump	Part No.
	FRAME ASSEMBLY	1	RM - 201PZG001A
1	FRAME	1	RM - 201PZG001
2	PLUG-SqHd PIPE	2	RM - 64A27
3	PLUG-SqHd PIPE	1	RM - 64A9
4	STUD, Crosshead Inspection Plate	2	RM - 79A238
5	NUT, Crosshead Inspection Stud	2	RM - 50B5
6	PLUG-SqHd PIPE	1	RM - 64A5
7	PLUG-MAGNETIC, Oil Drain	3	RM - 66D13
8	STUD, Hood	2	RM - 79A6
9	NUT, Hood Stud	2	RM - 50B5
10	GASKET, Crosshead Inspection Plate	2	RM - PZ715
11	PLATE-INSPECTION, Crosshead	2	RM - 200PZG052
12	SCREW, Crosshead Inspection Plate	10	RM - 655EE060
13	HOUSING-BEARING COVER(Rigid Side)	1	RM - 201PZG253
14	SCREW, Bearing Retainer Plate	12	RM - 655EG050
15	HOUSING-BEARING, Eccentric	2	RM - 200PZG006
16	GASKET, Bearing Cover Plate	2	RM - 201PZG715N
17	PLATE-BEARING COVER(Rigid Side)	1	RM - 200PZG315
19	SCREW, Bearing Cover Plate	48	RM - 655EG070
20	GASKET, Inspection Plate	1	RM - 25C1788N
21	PLATE-INSPECTION	1	RM - 202FXT052
22	SCREW, Inspection Plate	6	RM - 655EF050
23	GAUGE, Oil Level Sight	1	RM - 40L17
24	GAGUE-TEMPERATURE	1	RM - 27H11
25	BUSHING-PIPE	1	RM - 6400
26	SLIDE-CROSSHEAD	6	RM - 200PZG309
27	SCREW, Crosshead Slide to Frame	24	RM - 75LM6
28	SEAL-FASTENER	12	RM - 60DD35
29	LOCKNUT	24	RM - 50V44

No.	Description	QtyPer Pump	Part No.
	FRAME ASSEMBLY	1	RM - D76258
30	STUD, Spacer to Frame	4	RM - 2012526
31	KEY, Spacer to Frame	4	RM - 35C19
32	PLATE	4	RM - 200PZG247
33	NUT, Spacer to Frame	8	RM - 50B34
34	PLATE-BEARING COVER(Floating Side)	1	RM - 201PZG315
35	HOOD	1	RM - 200PZG053
36	SCREW, Hood to Frame( $1/2 \times 1$ )	28	RM - 655EF040
37	GASKET, Hood	1	RM - 200PZG715
38	BREATHER	1	RM - 5C24
39	PLATE-INSPECTION	1	RM - KXG842
40	GASKET, Inspection Plate	1	RM - 25C1818
41	SCREW, Inspection Plate	8	RM - 655EF040
42	GASKET, Inspection Plate Screw	8	RM - 25F13
43	PLATE-INSPECTION	3	RM - 206PZL052
44	GASKET, Inspection Plate	6	RM - 25C1839
45	SCREW, Inspection Plate	24	RM - 655ED040
46	PLATE-INSPECTION, Piston Rod	1	RM - 201PZG052
47	PLATE-INSPECTION, Piston Rod	1	RM - 202PZG052
48	PLATE-INSPECTION, Piston Rod	1	RM - 203PZG052
*	BUSHING-PIPE, Oil Level to Frame	1	RM - 6400000
*	SCREW, Hood to Frame( $1/2 \times 4^{1/2}$ )	4	RM - 655EE180

## POWER END ASSEMBLY



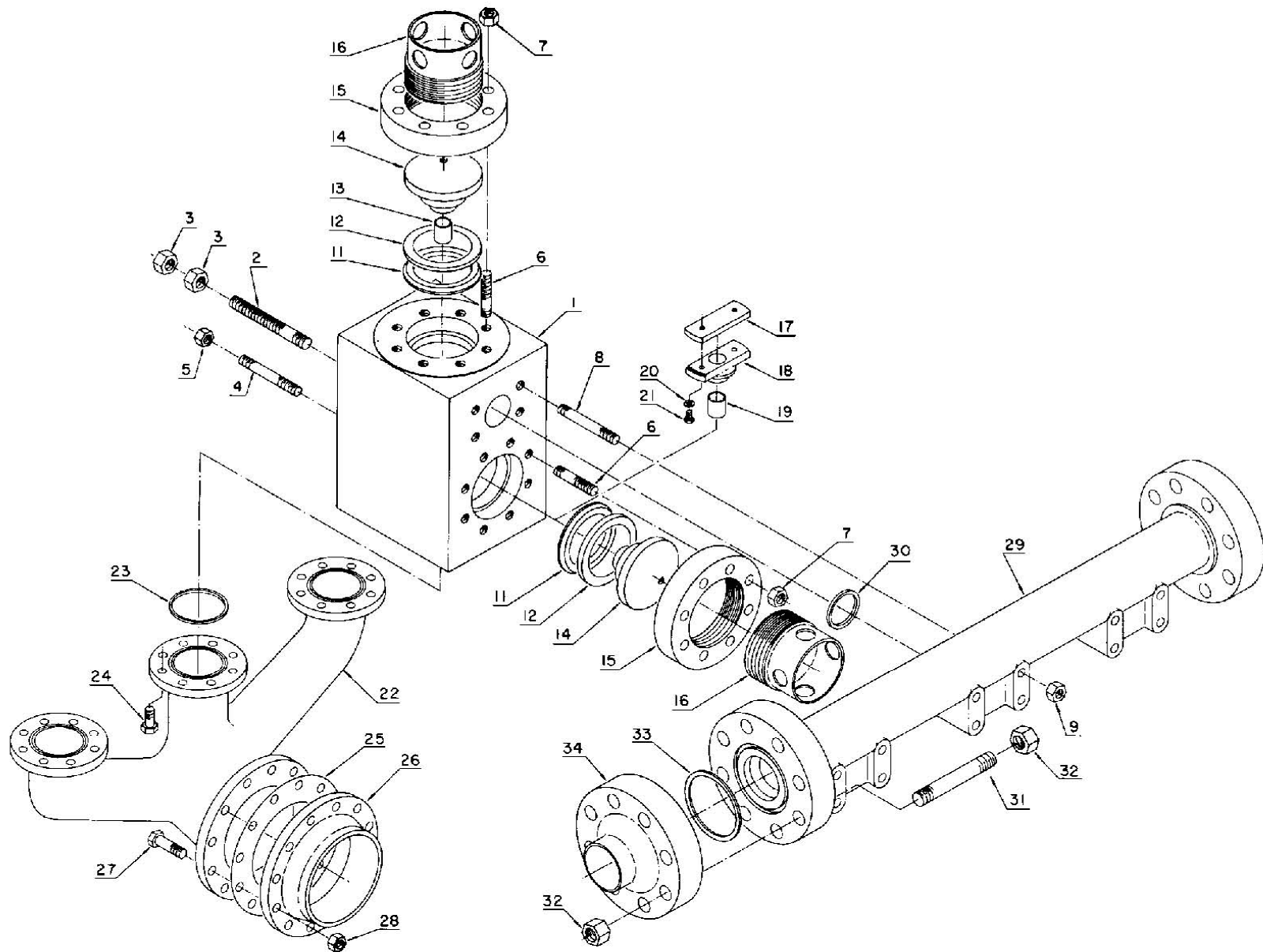
No.	Description	QtyPer Pump	Part No.
	POWER END ASSEMBLY	1	RM - E75422A
1	JACKSHAFT	1	RM - 200PZG371
2	KEY-JACKSHAFT	1	RM - 200PZG062
3	SPACER, Jackshaft Bearing	2	RM - 200PZG600
4	SLEEVE-WEAR	2	RM - 80M7
5	GASKET, Bearing Housing to Frame	2	RM - 25C2619
6	HOUSING-BEARING	2	RM - 201PZG006
7	BEARING-ROLLER, Jackshaft	2	RM - 12W75
8	GASKET, Retainer Plate to Bearing Housing	2	RM - 25C2620
9	PLATE, Bearing Retainer	2	RM - 200PZG253
10	SCREW, Bearing Housing	16	RM - 75A14
11	SEAL-OIL	2	RM - 60DD39
12	ECCENTRIC	1	RM - 200PZG255
13	GEAR-DRIVEN	1	RM - 200PZG280
14	SCREW, Gear to Eccentric	12	RM - 655EG12D
15	WIRE	144"	RM - 97A29
16	BEARING-ROLLER, Eccentric	2	RM - 12BA20
17	SHIM (.002")	6	RM - 200PZG732
18	SHIM (.005")	6	RM - 201PZG732
19	SHIM (.007")	6	RM - 202PZG732
20	SHIM (.020")	8	RM - 203PZG732
21	PLATE-RETAINER, Eccentric Bearing	2	RM - 201PZG168
22	SCREW, Retainer to Eccentric	12	RM - 655EG08D
23	WIRE	48"	RM - 97A29
24	PLUG-SqHd PIPE	2	RM - 64AC4
25	CONNECTING ROD		RM -
	Includes Reference Numbers 26 & 27	3	RM - 200PZG003
26	BOLT-CONNECTING ROD	6	RM - 200PAH254

No.	Description	QtyPer Pump	Part No.
	POWER END ASSEMBLY	1	RM - E75422A
27	NUT, Connecting Rod Bolt	6	RM - 50AQ30
28	LOCKNUT, Connecting Rod Bolt	6	RM - 50M2
29	BEARING, Connecting Rod to Eccentric	3	RM - 12BA18
30	RING-RETAINING, Connecting Rod Bearing	1	RM - 74D18
31	PLATE-RETAINING, Bearing to Eccentric	14	RM - 1PZ1400
32	SCREW, Bearing to Eccentric	14	RM - 655EF05D
33	WIRE	384"	RM - 97A29
34	PLATE-RETAINER, Bearing to Connecting Rod	22	RM - PZ1400
34A	PLATE-RETAINING, Bearing to Connecting Rod	2	RM - 201PZH253
35	SCREW, Bearing to Connecting Rod	48	RM - 75B41
36	WIRE	288"	RM - 97A29
37	BEARING-ROLLER, Crosshead Pin	3	RM - 12BA19
38	PIN-LOCK	3	RM - PZ838
39	SET SCREW	3	RM - 76F10
40	CROSSHEAD	3	RM - 200PZG005
41	PIN-CROSSHEAD	3	RM - 200PZG189
42	PLATE-RETAINER, Crosshead Pin	3	RM - 202PZG168
43	SCREW, Retainer Plate to Crosshead	12	RM - 655EG09D
43A	SCREW, Retainer Plate to Pin	6	RM - 75AG17
44	WIRE	72"	RM - 97A29
45	ROD-EXTENSION	3	RM - 200PZG839
46	SCREW, Rod to Crosshead	18	RM - PO701
47	WIRE	72"	RM - 97A29
48	PLATE-RETAINER, Oil Stop Head to Frame	6	RM - 200PZG168
49	GASKET, Oil Stop Head	3	RM - 25BC69N
50	HEAD-OIL STOP	3	RM - 200PZG051
51	GASKET	24	RM - 25F9



No.	Description	QtyPer Pump	Part No.
	POWER END ASSEMBLY	1	RM - E75422A
52	SCREW, Oil Stop Head to Frame	24	RM - 655EE080
53	SEAL	6	RM - 2011872
54	RING–RETAINER, Oil Stop Head Seal	6	RM - 1PV1398
55	SCREW, Seal Retainer to Oil Stop Head	18	RM - 75A102
56	BAFFLE–PISTON ROD	3	RM - 2FXK840
*	ADAPTOR, Rotating Shaft	1	RM - 2PO1398
*	SCREW, Hex Head	2	RM - 655EF050

## FLUID END ASSEMBLY



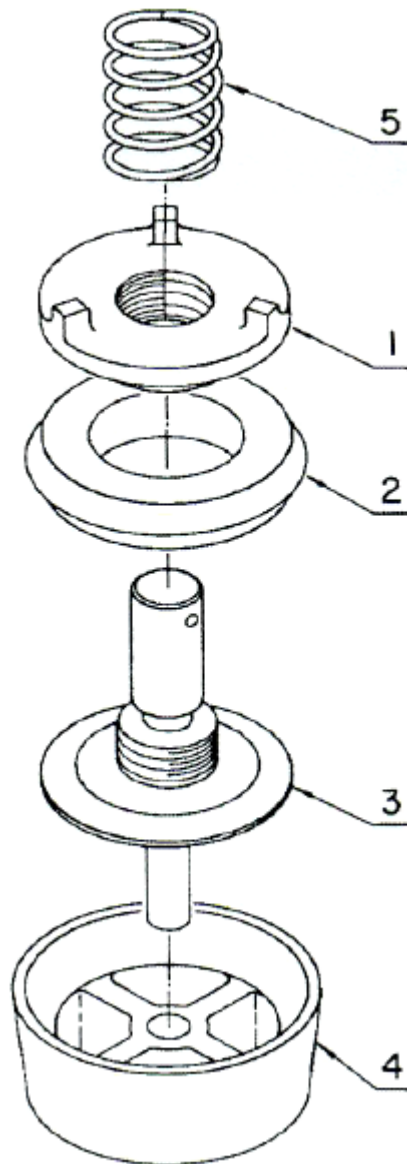
No.	Description	QtyPer Pump	Part No.
	FLUID END ASSEMBLY		RM - E75439
1	FLUID CYLINDER ASSEMBLY, Includes Reference Num	3	RM - 205PZL029D
2	STUD (1–1/4), Cylinder to Frame & Liner Clamp	24	RM - 79L188
3	NUT (1–1/4), Cylinder to Frame & Liner Stud	48	RM - 50B36
4	STUD (7/8), Cylinder to Frame	12	RM - 79L73
5	NUT (7/8), Cylinder to Frame Stud	12	RM - 50AQ30
6	STUD, Valve Cover to Cylinder	48	RM - 79AL6
7	NUT, Valve Cover Ring to Cylinder Stud	48	RM - 50B34
8	STUD, Cylinder to Discharge Manifold	12	RM - 202PZL110
9	NUT, Cylinder to Discharge Manifold Stud	12	RM - 50B34
11	RING–RETAINING, Valve Cover Gasket	6	RM - 2011861
12	GASKET, Valve Cover	6	RM - 2011862
13	BUSHING, Suction & Discharge Valve Cover	6	RM - 2007674
14	COVER–VALVE	6	RM - 2011860
15	RING–VALVE COVER	6	RM - 2011699
16	LOCK–COVER, Valve	6	RM - 2011857
	VALVE GUIDE ASSEMBLY, Includes Reference Number	3	RM - 2011706
17	PLATE–RETAINER	3	RM - 2011701
18	GUIDE–VALVE, Suction	3	RM - 2011700
19	BUSHING, Suction Valve Guide	3	RM - 2007674
20	LOCKWASHER	6	RM - 95W2
21	SCREW	6	RM - 655EE06S
22	MANIFOLD–SUCTION	1	RM - 200PZG069
23	GASKET, Suction Manifold to Cylinder	3	RM - 25G41
24	SCREW, Suction Manifold to Cylinder	24	RM - 655EG08N
25	GASKET, Suction Manifold Flange	1	RM - 25C131N
26	FLANGE, Suction	1	RM - 64CU11
27	SCREW, Suction Flange	12	RM - 655EG130
28	NUT	12	RM - 50B8

No.	Description	QtyPer Pump	Part No.
	FLUID END ASSEMBLY		RM - E75439
28	NUT	12	RM - 50B8
29	MANIFOLD-DISCHARGE	1	RM - 200PZG071
30	GASKET, Discharge Manifold to Cylinder	3	RM - 25AL35
31	STUD, Discharge Manifold Flange	16	RM - 209PZL110
32	NUT, Discharge Manifold Flange Stud	32	RM - 50AW11
33	GASKET, Discharge Manifold Flange	2	RM - 25V24
34	FLANGE-DISCHARGE	1	RM - 64EB15
*	FLANGE-BLIND	1	RM - 64EB240

---

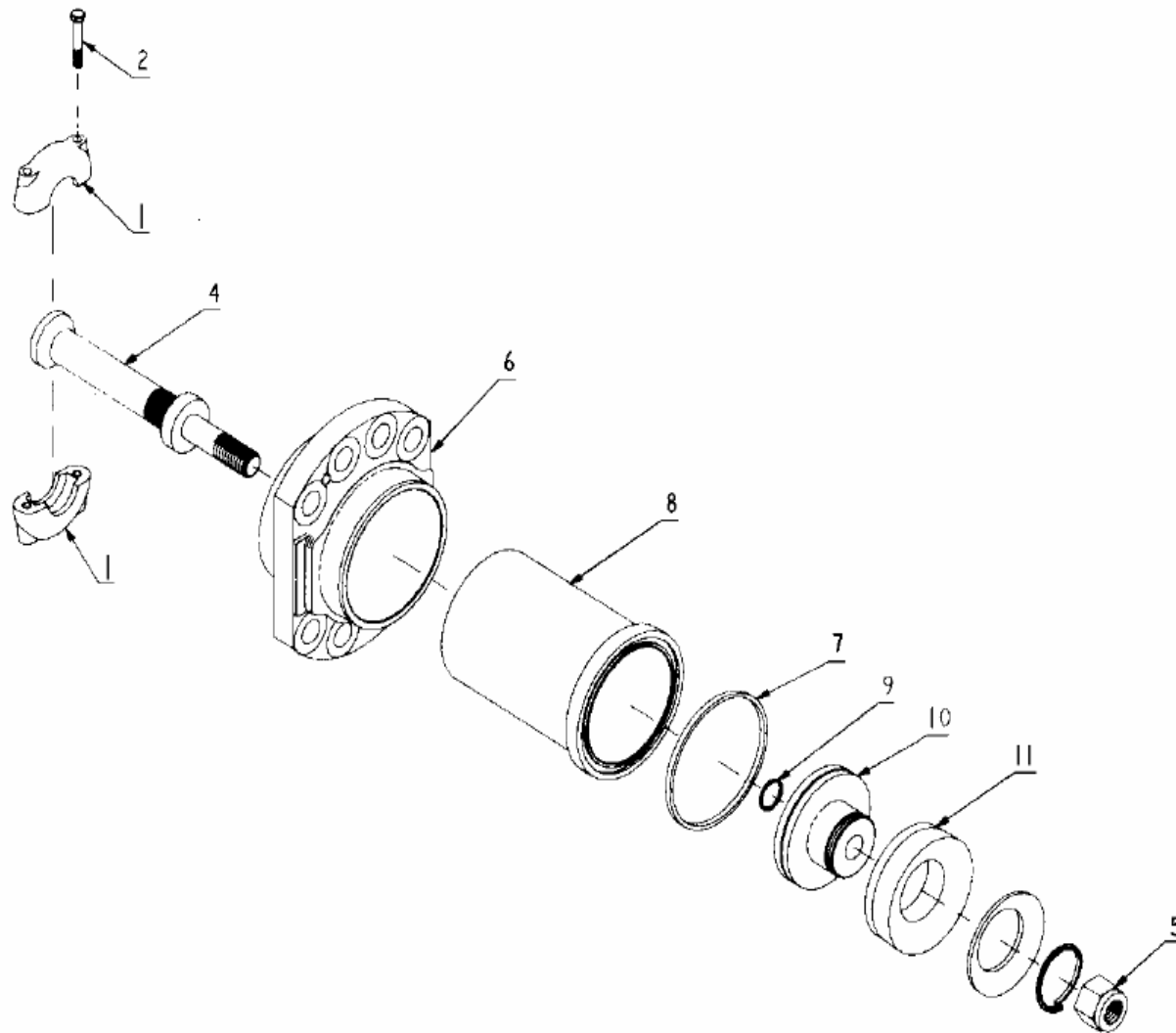
## FLUID VAVLE ASSEMBLY

( Four rib seat )



No.	Description	QtyPer Pump	Part No.
	FLUID VALVE ASSEMBLY		RM - PZL66086
	VALVE-FLUID Includes Ref. # 1 thru 3 .	6	RM - 200PZL482
1	PALTE-VALVE BODY	6	RM -
2	INERT ( Urethane )	6	RM - 201PZL106
2	INERT ( Rubber )	6	RM - 202PZL106
3	BODY-VALVE		RM -
4	SEAT-VALVE	6	RM - 200PZL039
5	SPRING	6	RM - 78H44

## COUPLING & LINER PISTON ASSEMBLY

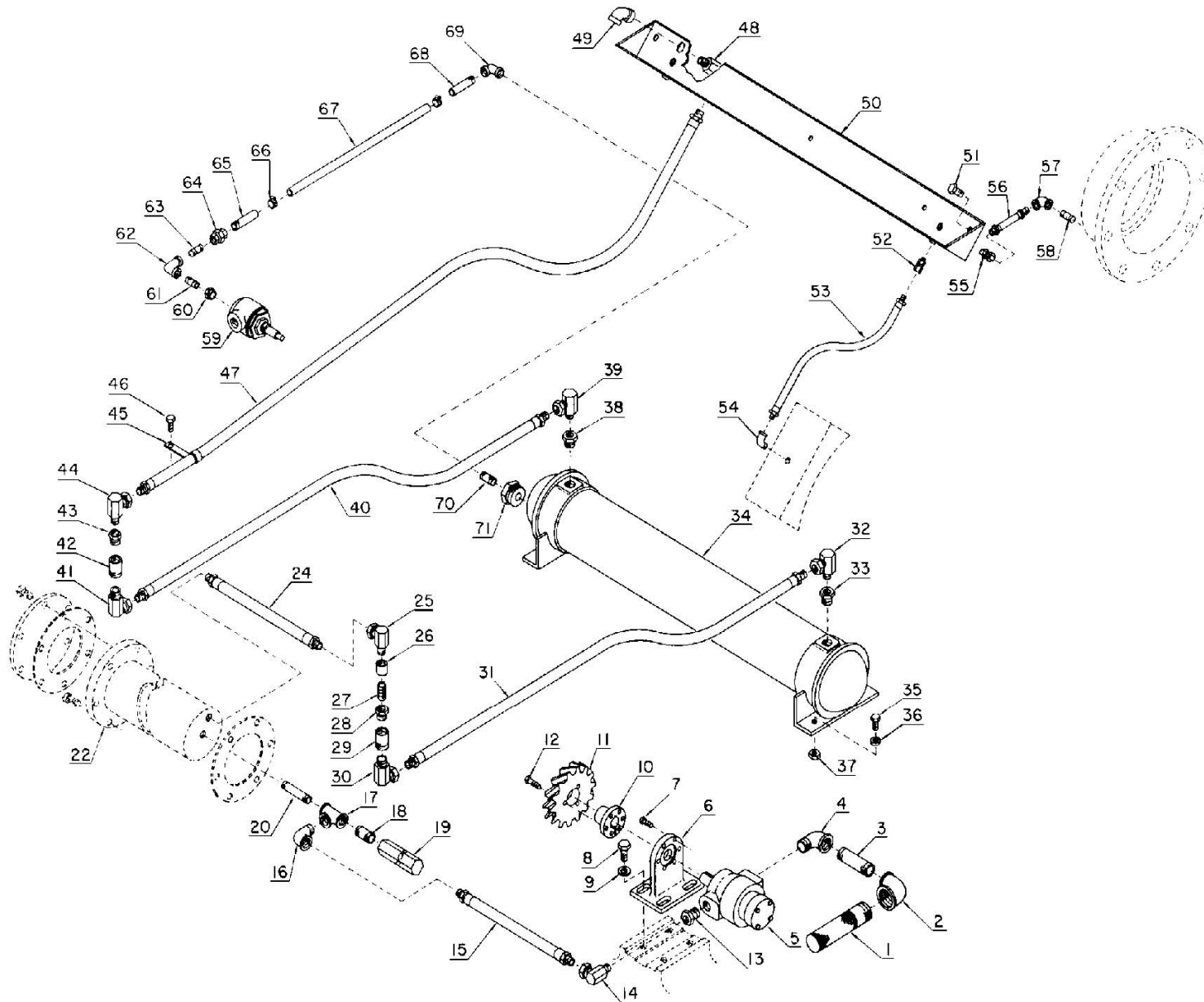


No.	Description	QtyPer Pump	Part No.
	COUPLING & LINER PISTON ASSEMBLY	1	RM - C77013
1	COUPLING–PLUNGER	3	RM - 200PZJ092
2	SCREW, Coupling Plunger	6	RM - 655EE22S
3 *	NUT, Flanged	6	RM - 50AW35
4	PISTON ROD, Incl. Ref. #5	3	RM - 201PZG060
5	LOCKNUT	3	RM - 50V14
6	CLAMP–LINER	3	RM - 1PV14
7	GASKET, Liner to Cylinder	3	RM - 25AT37
*	WRENCH	1	RM - 99L11



No.	Description	QtyPer Pump	Part No.	Part No.	Part No.	Part No.	Part No.	Part No.	Part No.
	COUPLING & LINER PISTON ASSEMBLY	1	RM -C77013						
			7 "	6-1/2 "	6 "	5-1/2 "	5 "	4-1/2 "	4 "
8	LINER	3	RM-PY13970	RM-PY13965	RM-PY13960	RM-PY13955	RM-200PZG456	RM-201PZG456	RM-300PZG456
9	O-RING	3	RM-25AH1	RM-25AH1	RM-25AH1	RM-25AH1	RM-25AH1	RM-25AH1	RM-25AH1
10	PISTON ASSEMBLY, Incl. Ref. #9 & 11	3	RM-202TBL045A	RM-201TBL045A	RM-245TBB045A	RM-243TBB045A	RM-241TBB045A	RM- 239TBB045A	RM-231TBK045A
11	INSERT GROUP, Incl. Retainer Plates & Rings	3	RM-TBL77586	RM-TBL77585	RM-TBB76028	RM-TBB76026	RM-TBB76024	RM-TBB76022	RM-TBK90428

## POWER END LUBRICATION ASSEMBLY



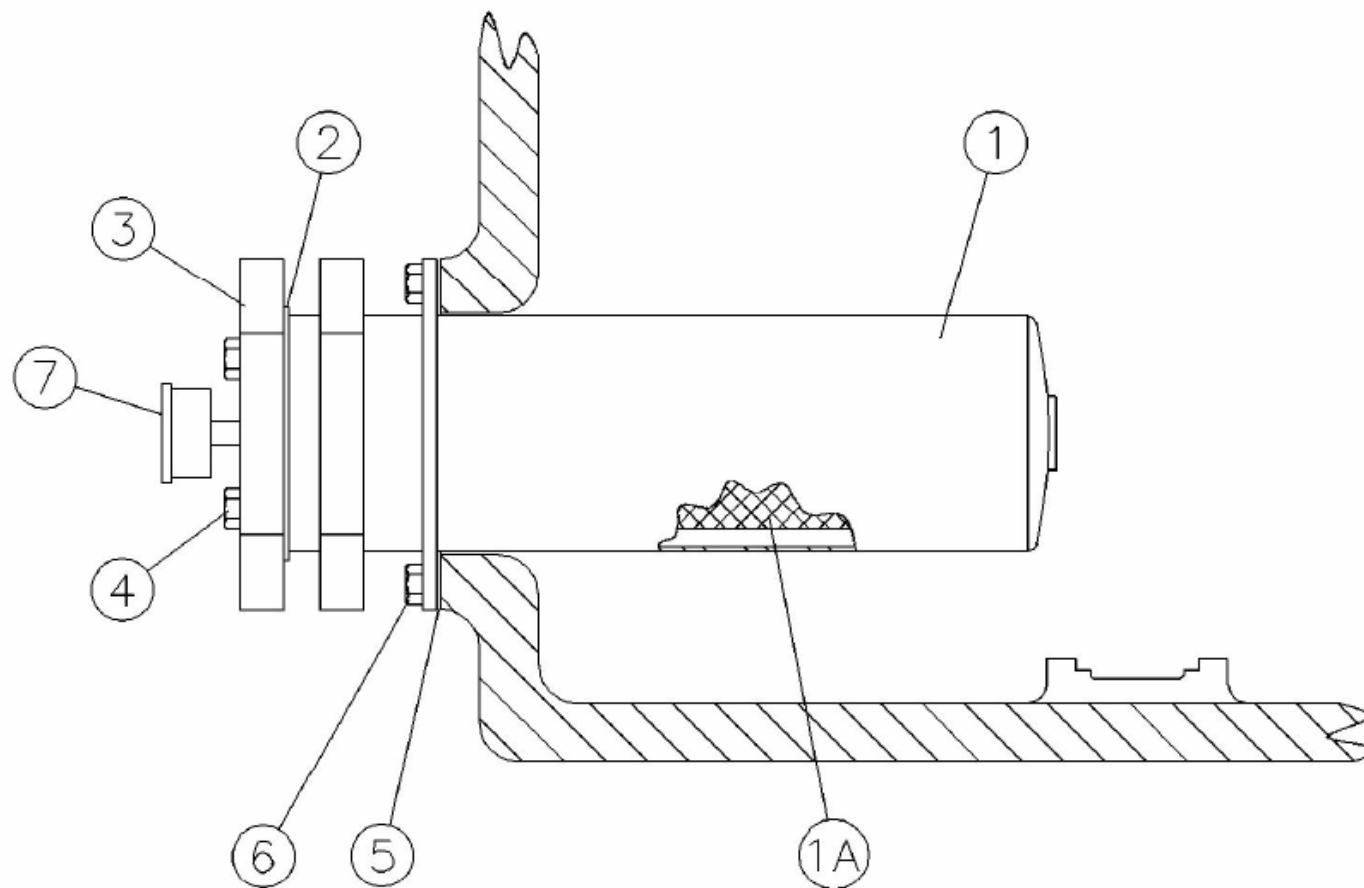
No.	Description	QtyPer Pump	Part No.
	POWER END LUBRICATION ASSEMBLY		RM - E75423
1	SCREEN-OIL	1	RM - 3WAJ511
2	ELBOW	1	RM - 64S12
3	NIPPLE	1	RM - 63H4
4	ELBOW	1	RM - 64C6
5	PUMP-OIL *	1	RM - 46C21
6	ADAPTOR, Oil Pump to Frame	1	RM - PZ1398
7	SCREW, Adaptor to Oil Pump	6	RM - 655ED04D
8	SCREW, Adaptor to Frame	4	RM - 655EF05D
9	WASHER	4	RM - 95U7
10	BUSHING-HUB, Gear, Includes Reference No. 12	1	RM - 22F12SD
11	GEAR-DRIVEN, Oil Pump	1	RM - 2013884
12	SCREW, Gear to Bushing		RM -
	(Included with Reference Number 10)	1	RM -
φ	NIPPLE	1	RM - 63H4
φ	WIRE, Adaptor to Oil Pump	12"	RM - 97A29
φ	WIRE, Adaptor to Frame Screw	24"	RM - 97A29
	(Oil Pump to Filter Group)		RM -
13	BUSHING-PIPE	1	RM - 64E16
14	ADAPTOR-HOSE	1	RM - 29Q17
15	ASSEMBLY HYDRAULIC HOSE	1	RM - 29E12
16	ELBOW	1	RM - 64D6
17	TEE-PIPE	1	RM - 64G7
18	NIPPLE	1	RM - 63U12X16
19	VALVE-LIQUID RELIEF	1	RM - 90AR28
20	NIPPLE	1	RM - 63U12X34
22	FILTER-OIL **	1	RM - 26C18
	(Filter to Heat Exchanger Group)***		RM -

No.	Description	QtyPer Pump	Part No.
	POWER END LUBRICATION ASSEMBLY		RM - E75423
24	HYDRAULIC HOSE ASSEMBLY	1	RM - 29Z84
25	ADAPTOR-HOSE	1	RM - 29Q17
26	COUPLING-PIPE	1	RM - 64BK5
27	NIPPLE	1	RM - 63G1
28	BUSHING-PIPE	1	RM - 64E16
29	CONNECTOR-PIPE	1	RM - 78AUX113
30	ADAPTOR-HOSE	1	RM - 29Q10
31	HYDRAULIC HOSE ASSEMBLY	1	RM - 2009270
32	ADAPTOR-HOSE	1	RM - 29Q10
33	BUSHING-PIPE	1	RM - 64E11
34	HEAT EXCHANGER	1	RM - 2013457
35	SCREW, Heat Exchanger to Skid	4	RM - 655EE060
36	LOCKWASHER	4	RM - 95B5
37	NUT	4	RM - 50B5
φ	PLUG-ZINC, Protective	1	RM - 2008076
	(Heat Exchanger to Oil Trough Group)		RM -
38	BUSHING-PIPE	1	RM - 64E11
39	ADAPTOR-HOSE	1	RM - 29Q10
40	HYDRAULIC HOSE ASSEMBLY	1	RM - 2009247
41	ADAPTOR-HOSE	1	RM - 29Q10
42	CONNECTOR, Frame	1	RM - 78AUX113
43	BUSHING-PIPE	1	RM - 6.4E+17
44	ADAPTOR-HOSE	1	RM - 29Q17
45	CLAMP, Hose	1	RM - PZ1301
46	SCREW, Clamp	1	RM - 65EF040
47	HYDRAULIC HOSE ASSEMBLY	1	RM - 29R93
48	ADAPTOR-HOSE	1	RM - 29Q17

No.	Description	QtyPer Pump	Part No.
	POWER END LUBRICATION ASSEMBLY		RM - E75423
49	ELBOW	1	RM - 64C5
50	TROUGH, Oil Feed	1	RM - 200PZG125
51	SCREW, Oil Feed Trough to Frame	2	RM - 655EF030
φ	SCREW, Hose Clamp to Bearing Housing	1	RM - 655EG04N
φ	WASHER, Hose Clamp to Bearing Housing	1	RM - 95A8
	(Oil Trough to Main Bearings)		RM -
52	ADAPTOR-HOSE	2	RM - 29Q54
53	HYDRAULIC HOSE ASSEMBLY	2	RM - 29Z60
54	ELBOW	2	RM - 64D4
	(Oil Trough to Jackshaft Bearings)		RM -
55	ADAPTOR-HOSE	2	RM - 29Q64
56	HYDRAULIC HOSE ASSEMBLY	2	RM - 29Z61
57	ELBOW	2	RM - 64C3
58	NIPPLE	2	RM - 64000
	(Thermostat Valve to Heat Exchanger Group)***		RM -
59	VALVE-THERMOSTAT	1	RM - 90K165
60	BUSHING-PIPE	1	RM - 64E14
61	NIPPLE	1	RM - 63F21
62	ELBOW	1	RM - 64C4
63	NIPPLE	1	RM - 63F21
64	UNION	1	RM - 64Z3
65	NIPPLE	1	RM - 63AJ8X40
66	CLAMP-HOSE	2	RM - 29B31
67	HOSE-OIL	20"	RM - R14G
68	NIPPLE	1	RM - 63AJX840
69	ELBOW	1	RM - 64C4
70	NIPPLE	1	RM - 63F21
71	BUSHING	1	RM - 64E29

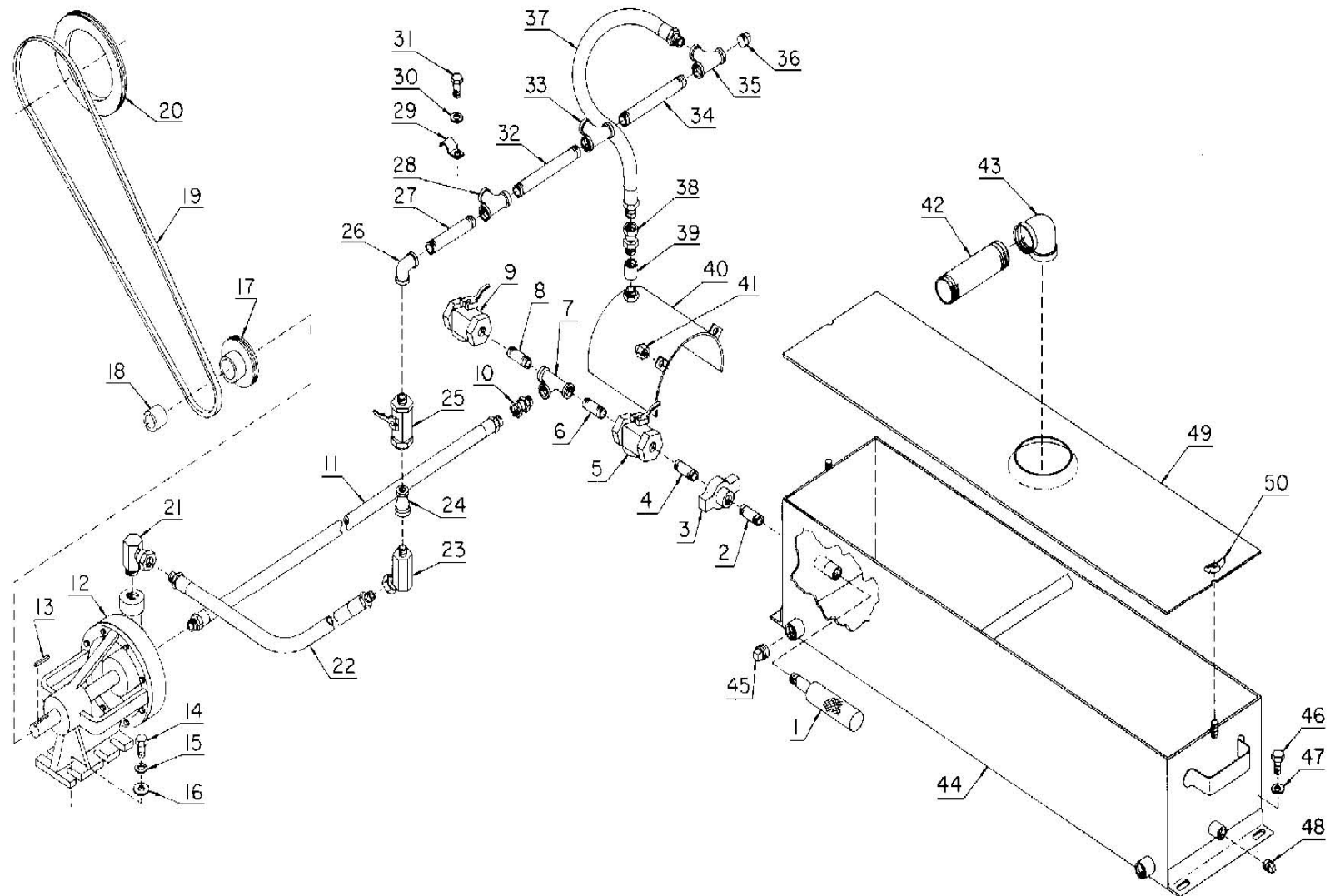
---

## OIL FILTER



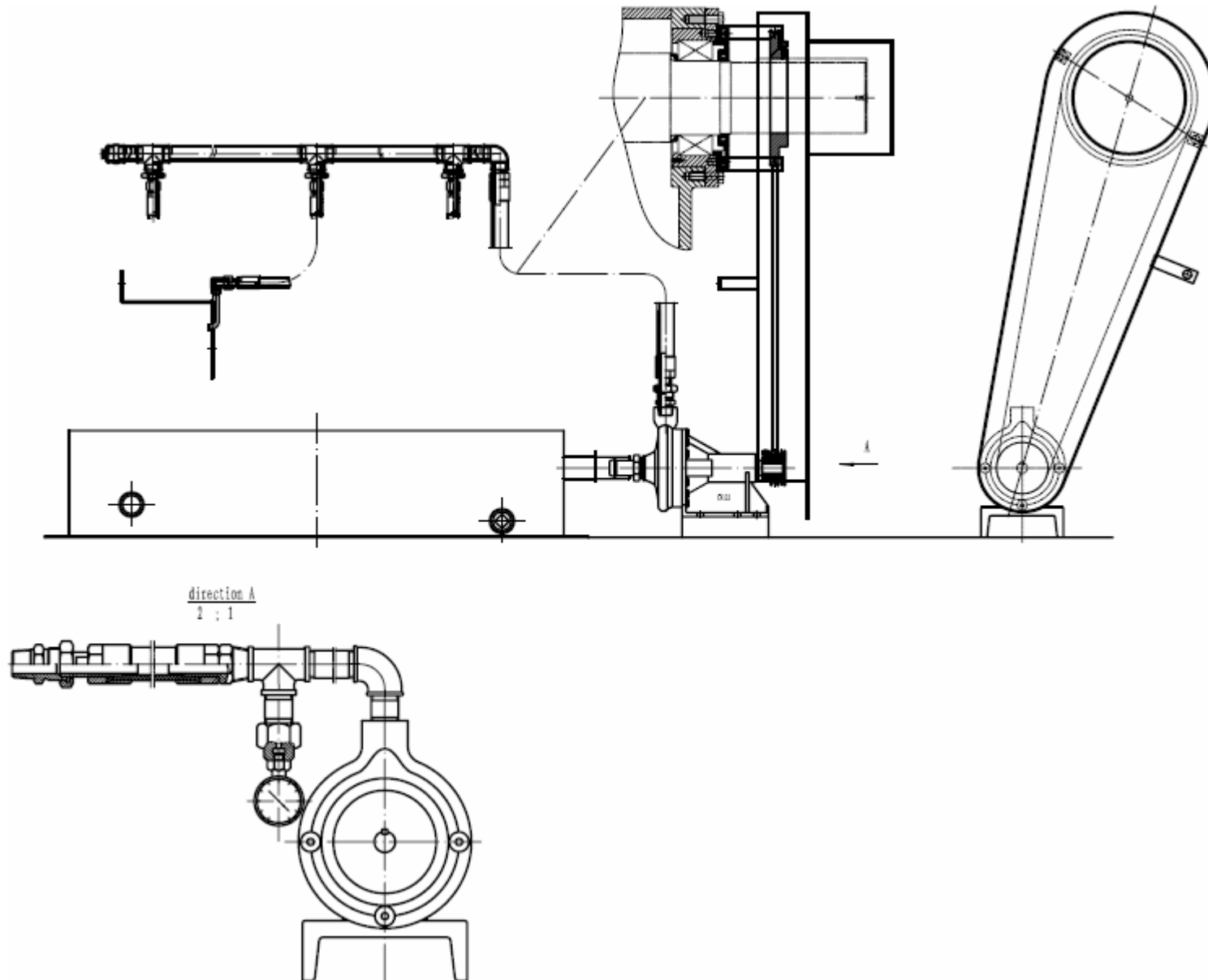
No.	Description	QtyPer Pump	Part No.
	OIL FILTER		RM - B75678
1	OIL FILTER ASSEMBLY, Includes Reference Nos. 1A th	1	RM - 26C18
1A	ELEMENT ASSEMBLY	1	RM - 5E30
2	GASKET	1	RM - 2109771
3	COVER	1	RM - 2109770
4	SCREW	4	RM - 75A54
5	GASKET, Filter to Frame	1	RM - 25C1788N
6	SCREW, Hex Cap, Filter to Frame	6	RM - 655EF050
7	GAUGE, Oil Pressure (80 psi)	1	RM - 27P253

## LINER LUBRICATION ASSEMBLY





## LINER LUBRICATION ASSEMBLY

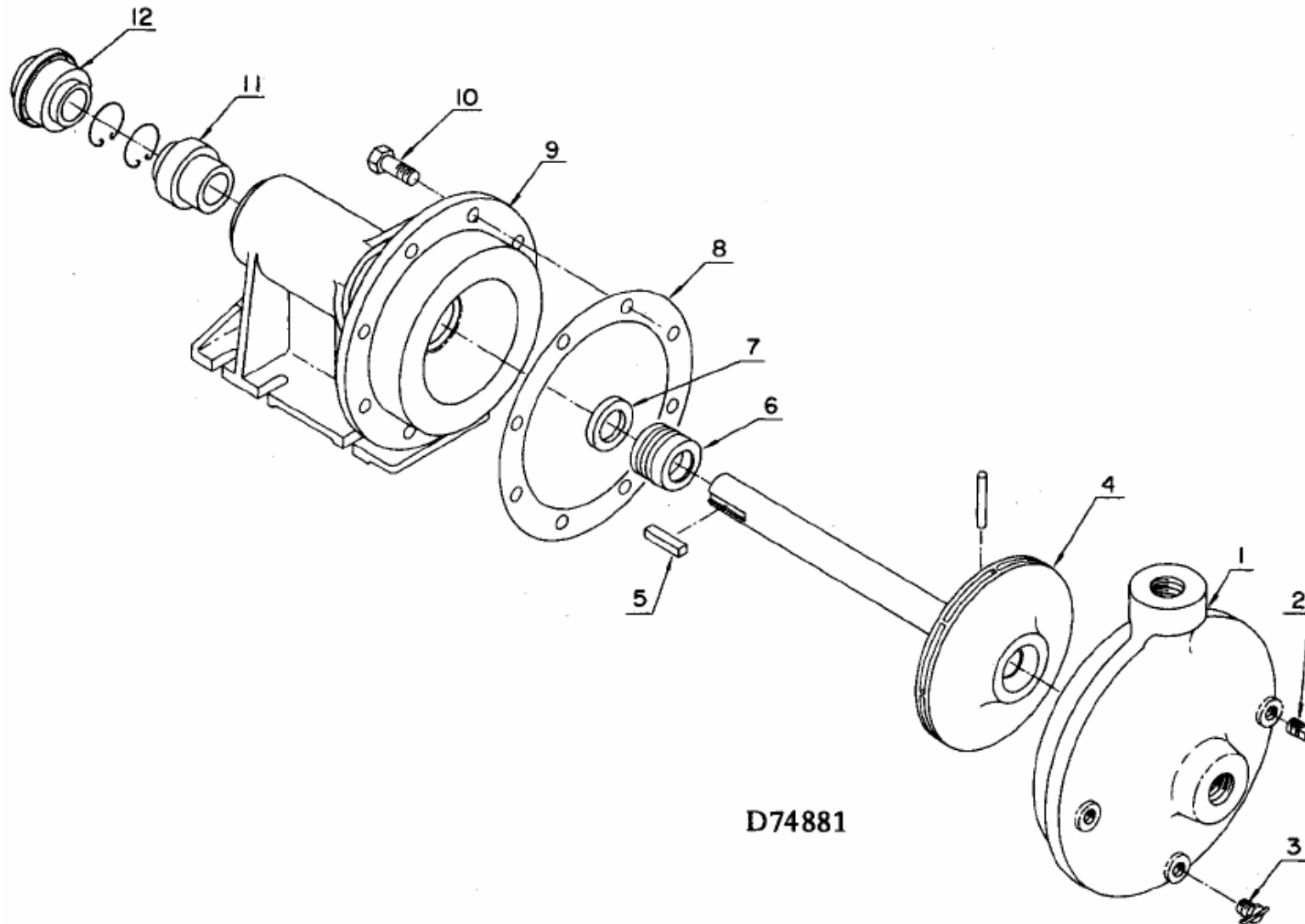


No.	Description	QtyPer Pump	Part No.
	LINER LUBRICATION ASSEMBLY	1	RM - D74738
1	SCREEN-OIL	1	RM - 2WAJ511
2	NIPPLE	1	RM - 63H25
3	UNION-HAMMER, Wing	1	RM - 64EB1
4	NIPPLE	1	RM - 63H25
5	VALVE	1	RM - 90A36
6	NIPPLE	1	RM - 63H25
7	TEE-PIPE	1	RM - 64G8G
8	NIPPLE	1	RM - 63H25
9	VALVE	1	RM - 90A36
10	ADAPTOR-HOSE	1	RM - 29Q9
11	HYDRAULIC HOSE ASSEMBLY	1	RM - 2009270
12	PUMP PISTON LUBRICATING,*		RM -
	Includes Reference Number 13	1	RM - CA122
13	KEY	1	RM - 35B4
14	SCREW, Pump to Skid	4	RM - 655ED040
15	LOCKWASHER, Pump to Skid	4	RM - 95B3
16	WASHER, Pump to Skid	4	RM - 95A3
17	SHEAVE	1	RM - 73K1A30
18	BUSHING-HUB	1	RM - 22E16B
19	BELT	1	RM - 13C22
20	AUXILIARY SHEAVE ASSEMBLY	1	RM - 2006103
Ø	PLATE, Lubricating Pump to Skid	1	RM - 201PZG247
Ø	SCREW, Lubricating Pump to Skid	2	RM - 655EE060
Ø	WASHER, Lubricating Pump to Skid	2	RM - 95A5
Ø	LOCKWASHER, Lubricating Pump		RM -
	to Skid	2	RM - 95B5
Ø	SET SCREW, Sheave	2	RM - 76F30

No.	Description	QtyPer Pump	Part No.
	LINER LUBRICATION ASSEMBLY	1	RM - D74738
	(Pump to Liner Group)		RM -
21	ADAPTOR-HOSE	1	RM - 29Q10
22	HYDRAULIC HOSE ASSEMBLY	1	RM - 2009247
23	ADAPTOR-HOSE	1	RM - 29Q27
24	REDUCER-PIPE	1	RM - 64N3
25	VALVE	1	RM - 90A25
26	ELBOW	1	RM - 64C5
27	NIPPLE	1	RM - 63G8
28	TEE-PIPE	1	RM - 64P39
29	CLAMP-PIPE	2	RM - 98H5
30	WASHER	2	RM - 95A3
31	SCREW	2	RM - 75A68
32	NIPPLE	1	RM - 63N12X144
33	TEE-PIPE	1	RM - 64P39
34	NIPPLE	1	RM - 63N12X144
35	TEE-PIPE	1	RM - 64P39
36	PLUG	1	RM - 64A5
37	HYDRAULIC HOSE ASSEMBLY	3	RM - 29R32
38	ADAPTOR-HOSE	3	RM - 29Q83
39	REDUCER-PIPE	3	RM - 64N15
40	BAFFLE	3	RM - 200PZG840
41	NUT-ACORN	6	RM - 50Q30
	(Frame to Lube Oil Tank Group)		RM -
42	NIPPLE	1	RM - 63L7
43	ELBOW	1	RM - 64C9
44	TANK-LUBEOIL	1	RM - 2012639

No.	Description	QtyPer Pump	Part No.
	LINER LUBRICATION ASSEMBLY	1	RM - D74738
45	PLUG	2	RM - 64A7
46	SCREW, Lube Tank to Skid	4	RM - 655EE040
47	WASHER	4	RM - 95A5
48	PLUG	1	RM - 64A6
49	COVER-LUBE OIL TANK	1	RM - 2012655
50	NUT-WING	2	RM - 50H1

## LINER LUBRICATION PUMP ASSEMBLY

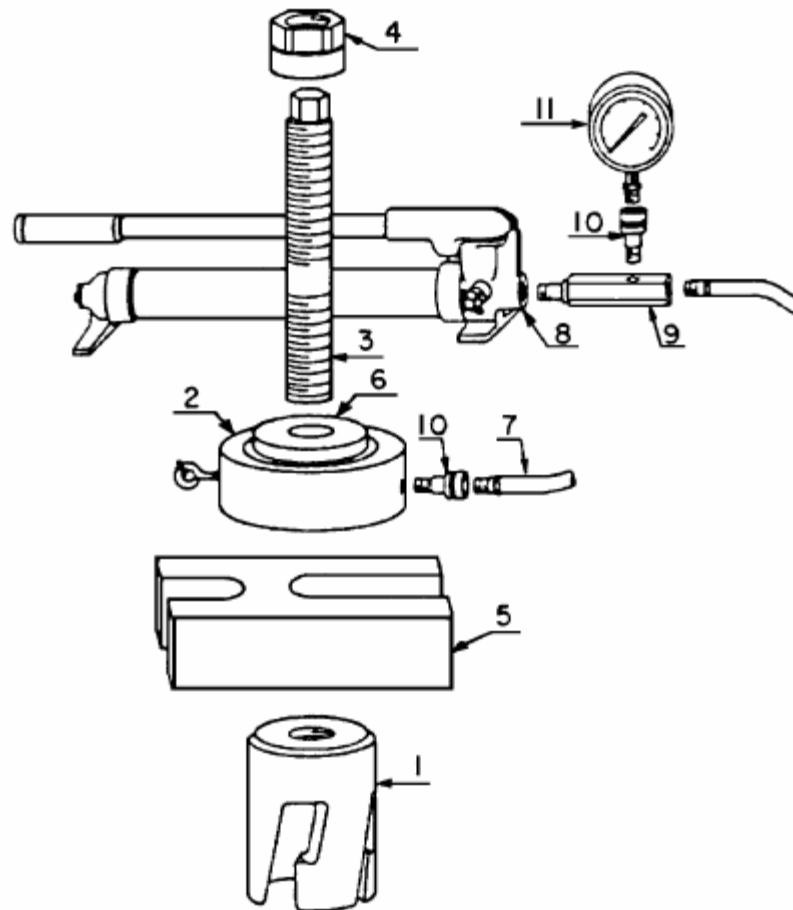


D74881

No.	Description	QtyPer Pump	Part No.
	Piston lubricating pump		RM - D74881
	Asm pump, incl. all parts shown		RM - CA122
1	Casing	1	RM - C1K2A1
2	Plug-SqHd pipe	2	RM - 64AA6
3	Cock, drain	1	RM - 90C31
4	Asm impeller, shaft & pin	1	RM - C1K1A1A
5	Key	1	RM - 35B4
6	Seal. Incl. ref. no. 7	1	RM - 60BT11
7	Seat, seal (ceramic)	1	RM - 54C269
8	Gasket	1	RM - 25D212
9	Frame	1	RM - C1H4A2
10	Screw	8	RM - 75A130
11	Bearing-ball (inner), incl. retaining ring	1	RM - 12AK3
12	Bearing-ball (outer), incl. retaining ring	1	RM - 12AK10

---

## VEALVE SEAT PULLER ASSEMBLY



No.	Description	QtyPer Pump	Part No.
	VEALVE SEAT PULLER ASSEMBLY	1	RM - D74738
1	HEAD (Not Included with 100E12 Puller)	1	RM - 100E13
	VALVE SEAT PULLER ASSEMBLY, Includes Ref. Numbers 2 thru 11	1	RM - 100E12
2	HYDRAULIC JACK	1	RM - 2116728
3	CENTER STEM	1	RM - 2117314
4	CENTER STEM NUT	1	RM - 2117315
5	PULLER H BAR BASE	1	RM - 2116727
6	CENTER BUSHING #5	1	RM - 2117316
	CENTER BUSHING #6	1	RM - 2117517
7	HYDRAULIC HOSE	1	RM - 2117318
8	HYDRAULIC PUMP	1	RM - 2117319
9	GAUGE ADAPTOR	1	RM - 2117320
10	GAUGE COUPLER	2	RM - 2117322
	GAUGE COUPLER	2	RM - 2117321
11	GAUGE 170 TON	1	RM - 2117323
*	CARRYING CASE	1	RM - 2117055